

F.A.P. RTE.	SECTION	COUNTY	TOTAL SHEETS	SHEET NO.
330	0105-F	COOK	55	1
		ILLINOIS	CONTRACT NO. 60V68	

STATE OF ILLINOIS
DEPARTMENT OF TRANSPORTATION
DIVISION OF HIGHWAYS

**PROPOSED
HIGHWAY PLANS
F.A.P. 330 (US 12/45)**

**MANNHEIM ROAD SOUTH (IRVING PARK ROAD (IL 19) TO I-190)
BALMORAL AVENUE FLYUNDER RAMP
BEAM AND BEARING FABRICATION**

**SECTION: 0105-F
PROJECT: ACNHF-0330(068)**

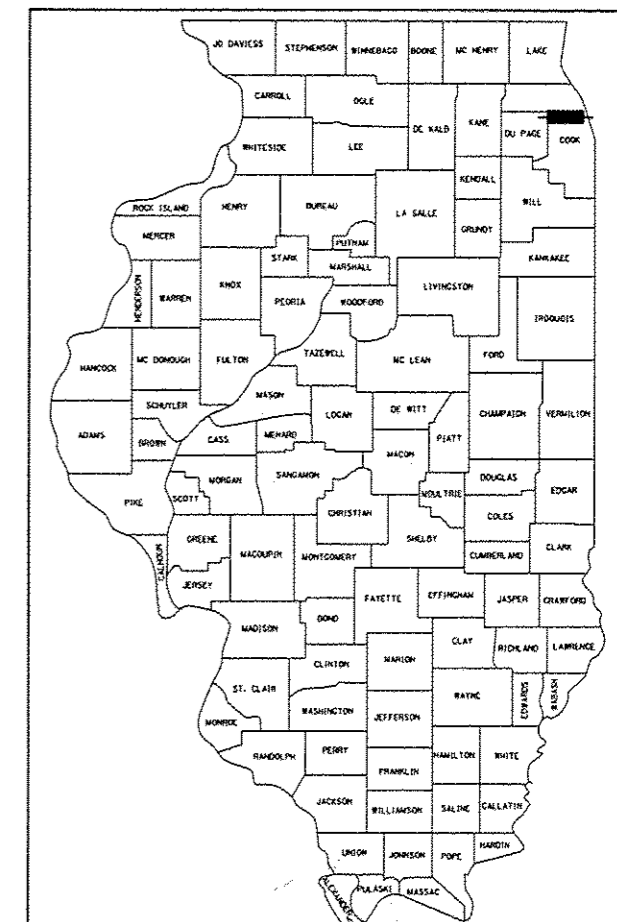
**COOK COUNTY
C-91-056-13**

INDEX OF SHEETS

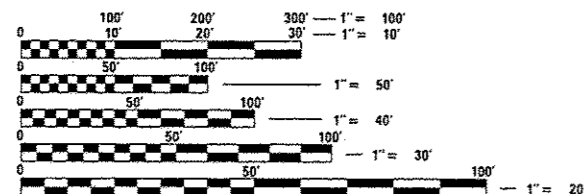
- 1 COVER SHEET
- 2 SUMMARY OF QUANTITIES
- 3-28 NORTHBOUND MANNHEIM ROAD BRIDGE
OVER SOUTHBOUND EXIT RAMP
- 28-55 SOUTHBOUND MANNHEIM ROAD BRIDGE
OVER SOUTHBOUND EXIT RAMP



Majid Mobasser 8/20/2012
MAJID MOBASSERI
ILLINOIS REGISTRATION No. 081-005058 STRUCTURAL ENGINEER
EXPIRATION DATE: 11/30/12



LOCATION OF SECTION INDICATED THUS: - [black rectangle] -



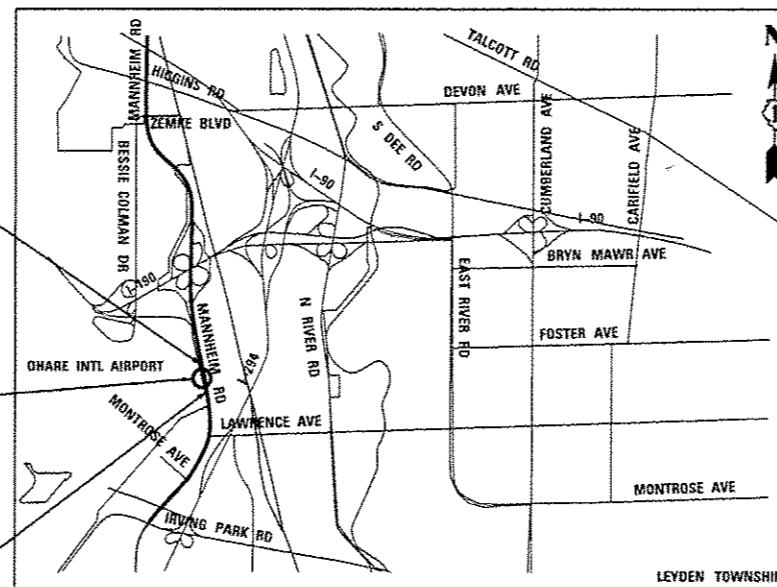
FULL SIZE PLANS HAVE BEEN PREPARED USING STANDARD ENGINEERING SCALES. REDUCED SIZED PLANS WILL NOT CONFORM TO STANDARD SCALES. IN MAKING MEASUREMENTS ON REDUCED PLANS, THE ABOVE SCALES MAY BE USED.

J.U.L.I.E.
JOINT UTILITY LOCATION INFORMATION FOR EXCAVATION
1-800-892-0123
OR 811

**PROJECT ENDS
STA. 76 + 28.99**

**STR No. 016-7943
NB MANNHEIM
STR No. 016-7942
SB MANNHEIM**

**PROJECT BEGINS
STA. 74 + 02.63**



LAYOUT MAP
N.T.S.

GROSS LENGTH = 226.36 FT. = 0.04 MILE
NET LENGTH = 226.36 FT. = 0.04 MILE

STATE OF ILLINOIS
DEPARTMENT OF TRANSPORTATION
DIVISION OF HIGHWAYS

SUBMITTED *August 20, 2012*

John F. ...
DEPUTY DIRECTOR OF HIGHWAYS, REGION ENGINEER

October 5, 2012
John D. Baramelli P.E.
ENGINEER OF DESIGN AND ENVIRONMENT

October 5, 2012
William B. Frey, Jr.
DIRECTOR OF HIGHWAYS, CHIEF ENGINEER

CB CHRISTOPHER B. BURKE ENGINEERING, LTD.
9575 W. Higgins Road, Suite 600
Rosemont, Illinois 60018
(847) 823-0500

**PRINTED BY THE AUTHORITY
OF THE STATE OF ILLINOIS**

DISTRICT ONE DESIGN CONSULTANT SERVICES MANAGER: SERIN KELLER (847) 705-4556

**PROJECT ENGINEER: JOE SACCOMANNO (847) 705-4594
PROJECT MANAGER: SERIN KELLER (847) 705-4556
CONTRACT NO. 60V68**