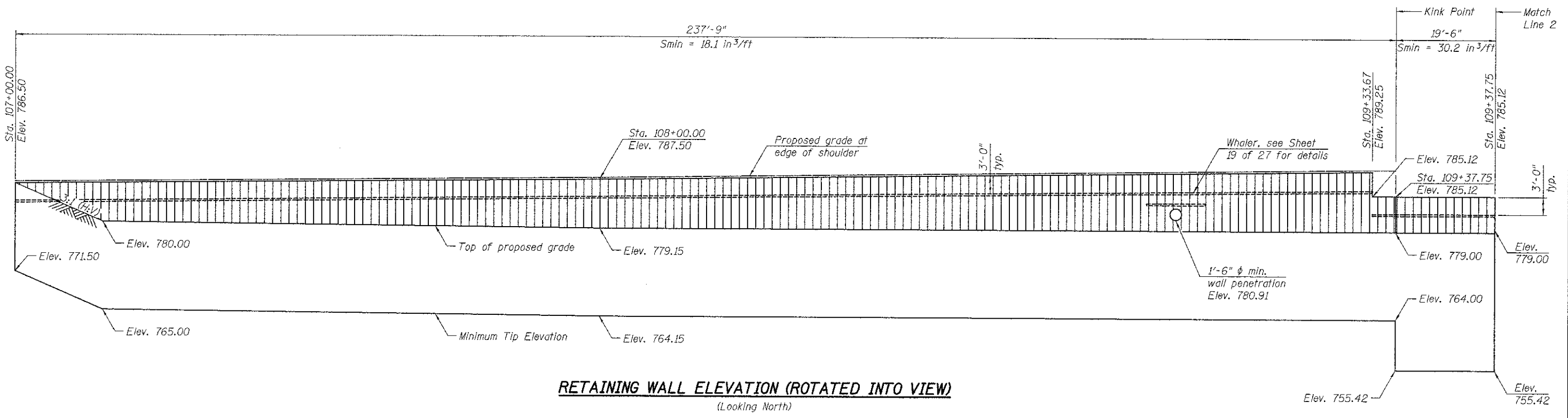


SOUTHWEST RETAINING WALL PLAN



RETAINING WALL ELEVATION (ROTATED INTO VIEW)
(Looking North)

FILE NAME = SA\JUL16800-6897\6862\207\Work\A\CAD\Drawings\Structural\056-3192-63666-017-RET2.dwg

	1170 SOUTH HOUBOLT ROAD JOLIET, ILLINOIS 60431 (815) 744-4200 IDFPR NO. 184-001273	USER NAME = vanessam	DESIGNED <i>RRD</i>	REVISIONS	MCHENRY COUNTY DIVISION OF TRANSPORTATION HILL ROAD BRIDGE OVER NORTH BRANCH NIPPERSINK CREEK	RETAINING WALL DETAILS (2 OF 5) STRUCTURE NO. 056-3192 SHEET NO. 17 OF 27 SHEETS	TR	SECTION	COUNTY	TOTAL SHEETS	SHEET NO.	
		PLOT SCALE =	CHECKED <i>AJS</i>	10-26-2012 RRD			21	08-00356-00-BR	MCHENRY	77	47	
		PLOT DATE = 10/26/2012	DRAWN <i>BJF</i>									
			CHECKED <i>RRD</i>									
							CONTRACT NO. 63666					
							ILLINOIS FED. AID PROJECT					