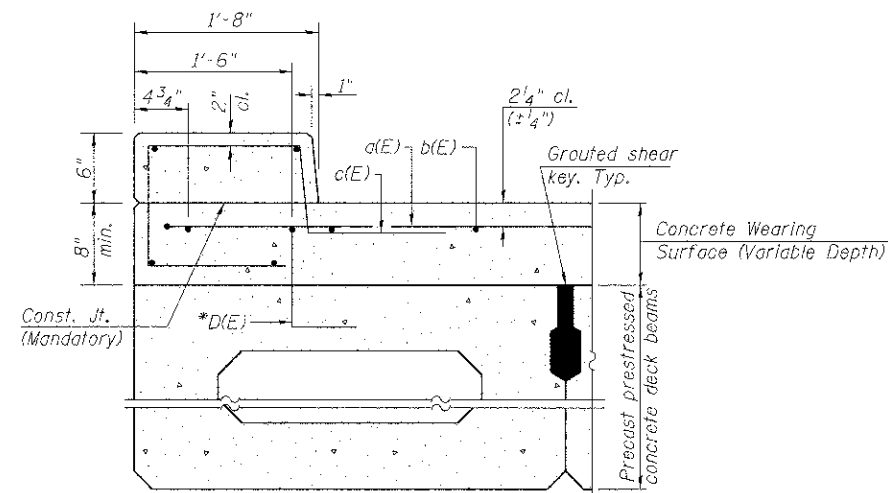
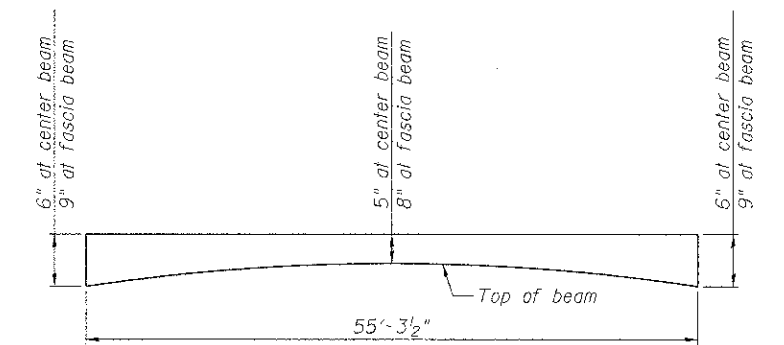


CURB JOINT DETAILS

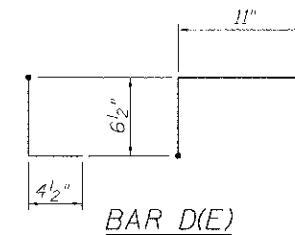


SECTION THRU FASCIA BEAM
Rail Post anchorage not shown for clarity

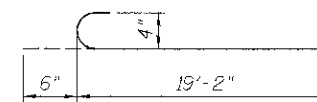


ANTICIPATED CONCRETE WEARING SURFACE PROFILE
(For information only)

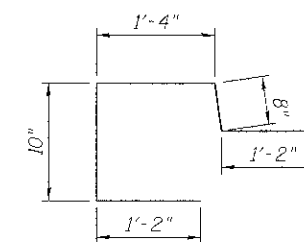
Estimated Final Beam Camber = 1"



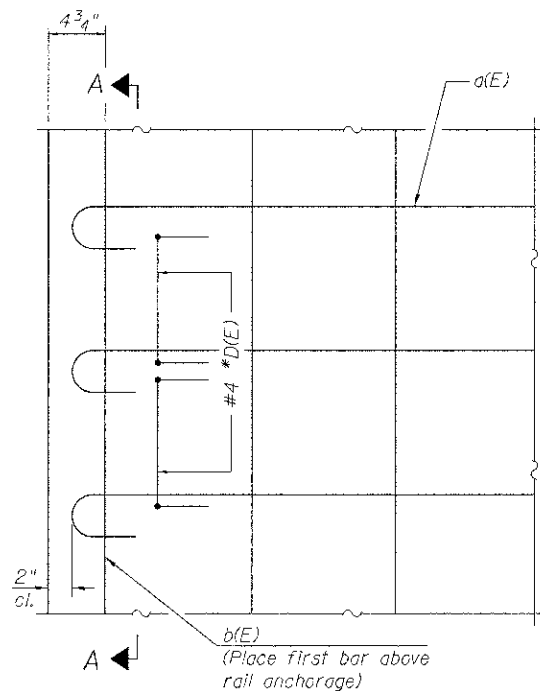
* Place 2-#4 D(E) bars in beam at each post location as shown. D(E) bar included in cost of beam.



BAR a(E)

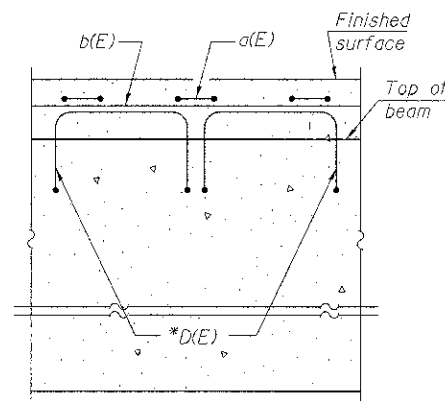


BAR c(E)



PLAN
At Curb

Notes:
Form work necessary for the wearing surface may be secured utilizing the bottom rail anchorage inserts and/or additional inserts cast into the beam.



SECTION A-A

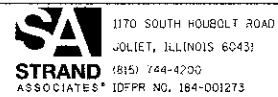
MINIMUM BAR LAP
#4 bar = 2'-7"
#5 bar = 3'-3"

SUPERSTRUCTURE BILL OF MATERIAL

Bar	No.	Size	Length	Shape
a(E)	224	#4	19'-8"	C
b(E)	160	#4	29'-9"	—
b ₁ (E)	16	#5	29'-4"	—
c(E)	280	#5	5'-2"	C
Reinforcement Bars, Epoxy Coated			Pound	8,120
Concrete Wearing Surface, (Variable Depth)			Cu. Yd.	83
Concrete Superstructure			Cu. Yd.	7
Bridge Deck Grooving			Sq. Yd.	378
Protective Coat			Sq. Yd.	455

Bars indicated thus 20 x 2 -#4 etc. indicates 20 line of bars with 2 lengths per line.

FILE NAME = s:\p1\6866-6899\6866-087\mcrns\cadd\sheet\structure\050-3192-0366-025-SUPDET.dgn



USER NAME = brianf
DESIGNED = RRD
CHECKED = AJS
DRAWN = BJF
PLOT DATE = 8/23/2012

REVISIONS:
REVISION -
REVISION -
REVISION -
REVISION -

DESIGNED = RRD
CHECKED = AJS
DRAWN = BJF
PLOT DATE = 8/23/2012

MCHENRY COUNTY DIVISION OF TRANSPORTATION
HILL ROAD BRIDGE OVER
NORTH BRANCH NIPPERSINK CREEK

SUPERSTRUCTURE DETAILS
STRUCTURE NO. 056-3192
SHEET NO. 5 OF 27 SHEETS

TR	SECTION	COUNTY	TOTAL SHEETS	SHEET NO.
21	08-00356-00-BR	MCHENRY	77	35

CONTRACT NO. 63666
ILLINOIS FED. AID PROJECT