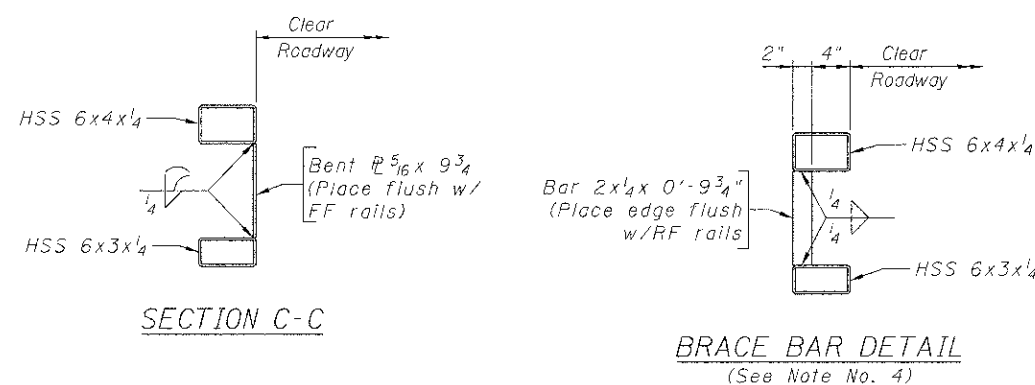
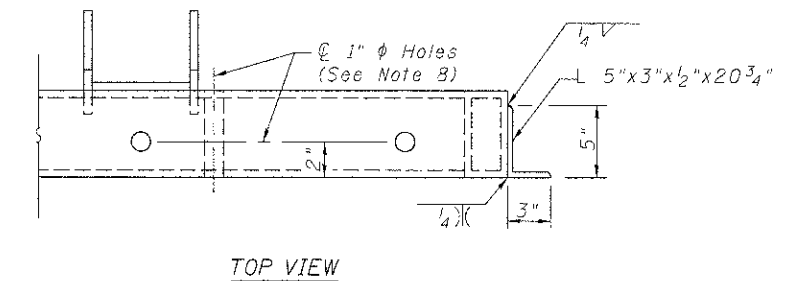
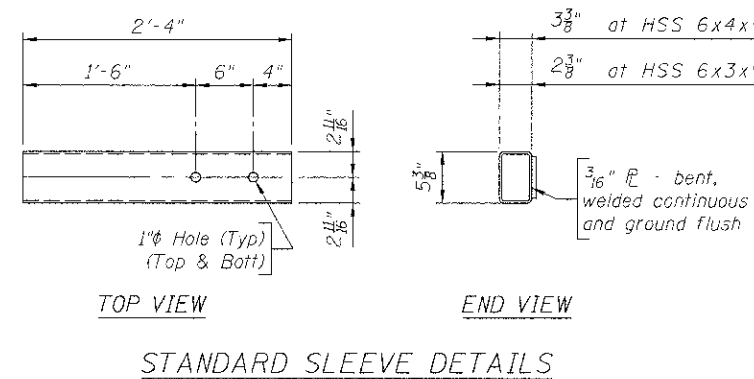
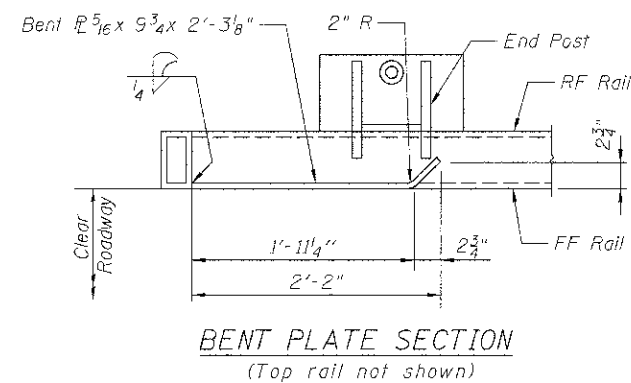
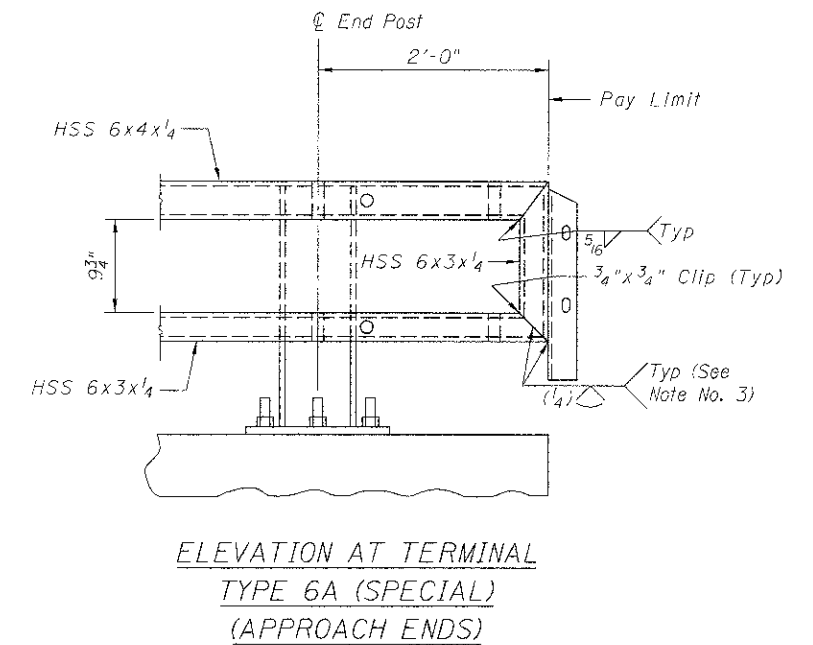
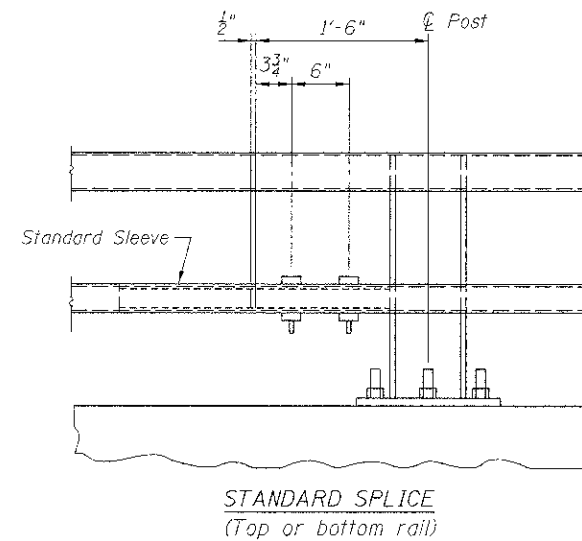
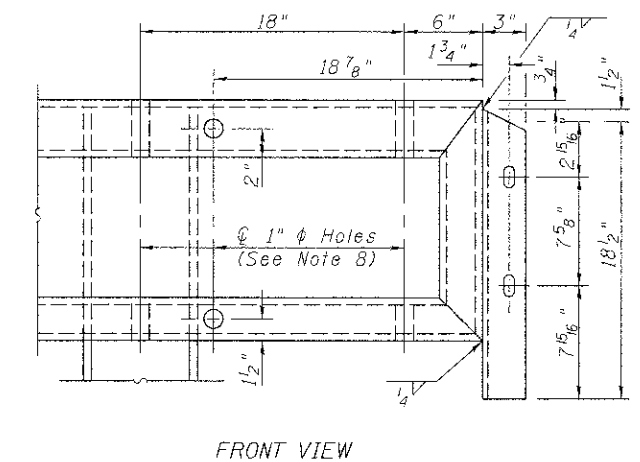


ELEVATION AT TRAFFIC BARRIER TERMINAL (SPECIAL)
(DEPARTURE ENDS)



NOTES

- 1) Either top or bottom rail in terminal section may be the longer rail.
- 2) Ensure each rail length is continuous over a minimum of two posts. Railing that is part of a Traffic Barrier Terminal is continuous if either the top or bottom rail in the terminal is continuous over a minimum of two posts.
- 3) Ensure the fabricator prepares a sample of the indicated joint and it is macro etched to demonstrate that the required effective throat is achieved.
- 4) Ensure a Brace Bar is placed 2'-0" from the splice end of the shorter tube at Traffic Barrier Terminals.
- 5) Splices may be located on either side of post.
- 6) Not more than one splice is permitted per side of post.
- 7) Do not shop splice rails.
- 8) Holes in steel railing may be field drilled for connection to Traffic Barrier Terminals. Any galvanized steel exposed or damaged by drilling operation shall be painted with two coats of a zinc-rich paint conforming to ASTM A 780.



END CONNECTION ANGLES
(APPROACH ENDS ONLY)

FILE NAME = m:\proj\BRW0-6999\B942\07\micr-ost\acadd sheets\dwg\056-3192-63666-008-MRRL.dgn

<p>1170 SOUTH ROUBOLT ROAD JOLIET, ILLINOIS 60431 (815) 744-4200 ASSOCIATES' IDPR NO. 184-001273</p>	USER NAME = brianf	DESIGNED RRD	REVISED -	<p>MCHENRY COUNTY DIVISION OF TRANSPORTATION HILL ROAD BRIDGE OVER NORTH BRANCH NIPPERSINK CREEK</p>	<p>WYOMING 2-TUBE BRIDGE RAILING DETAILS (2 OF 2) STRUCTURE NO. 056-3192</p>	TR	SECTION	COUNTY	TOTAL SHEETS	SHEET NO.
	PLGT SCALE *	CHECKED AJS	REVISED -			21	08-C0356-00-BR	MCHENRY	77	39
	PLGT DATE = 8/23/2012	DRAWN BJF	REVISED -			CONTRACT NO. 63666				
		CHECKED RRD	REVISED -			SHEET NO. 9 OF 27 SHEETS				