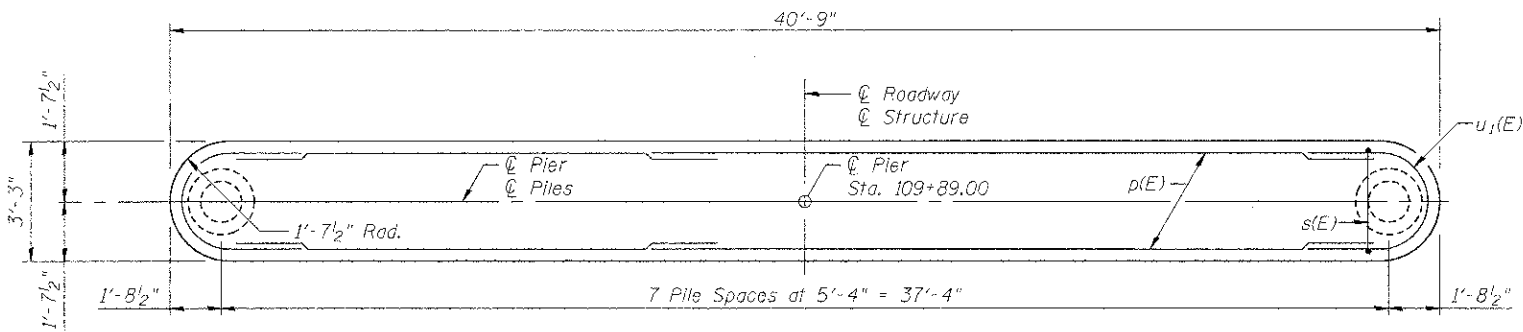
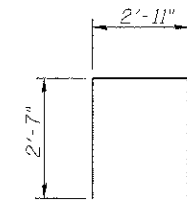


PILE DATA

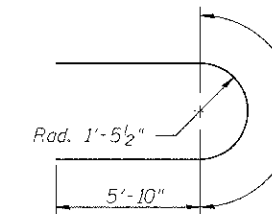
Type: Metal Shell-14"x0.312" walls with Pile Shoes
 Nominal Required Bearing: 360 kips
 Factored Resistance Available: 180 kips
 Est. Length: 28'-0"
 No. Production Piles: 7
 No. Test Piles: 1



TOP PLAN

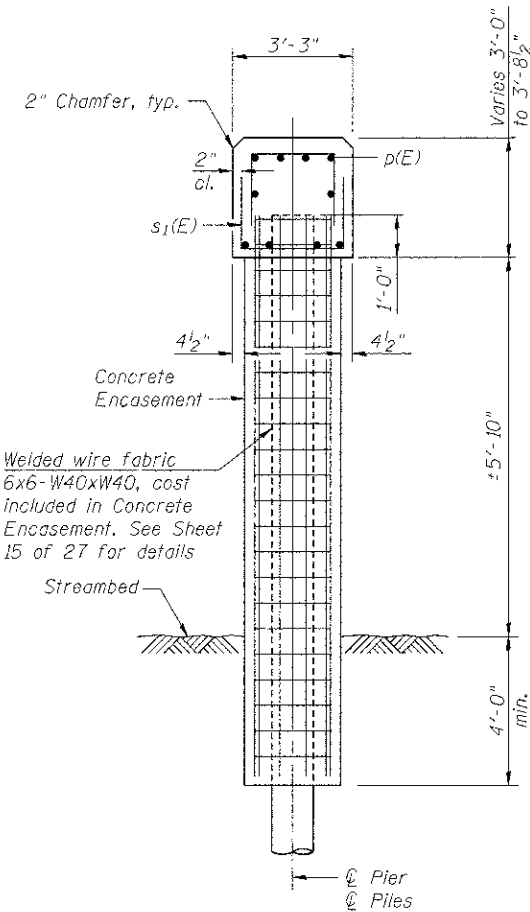


BAR s₁(E)

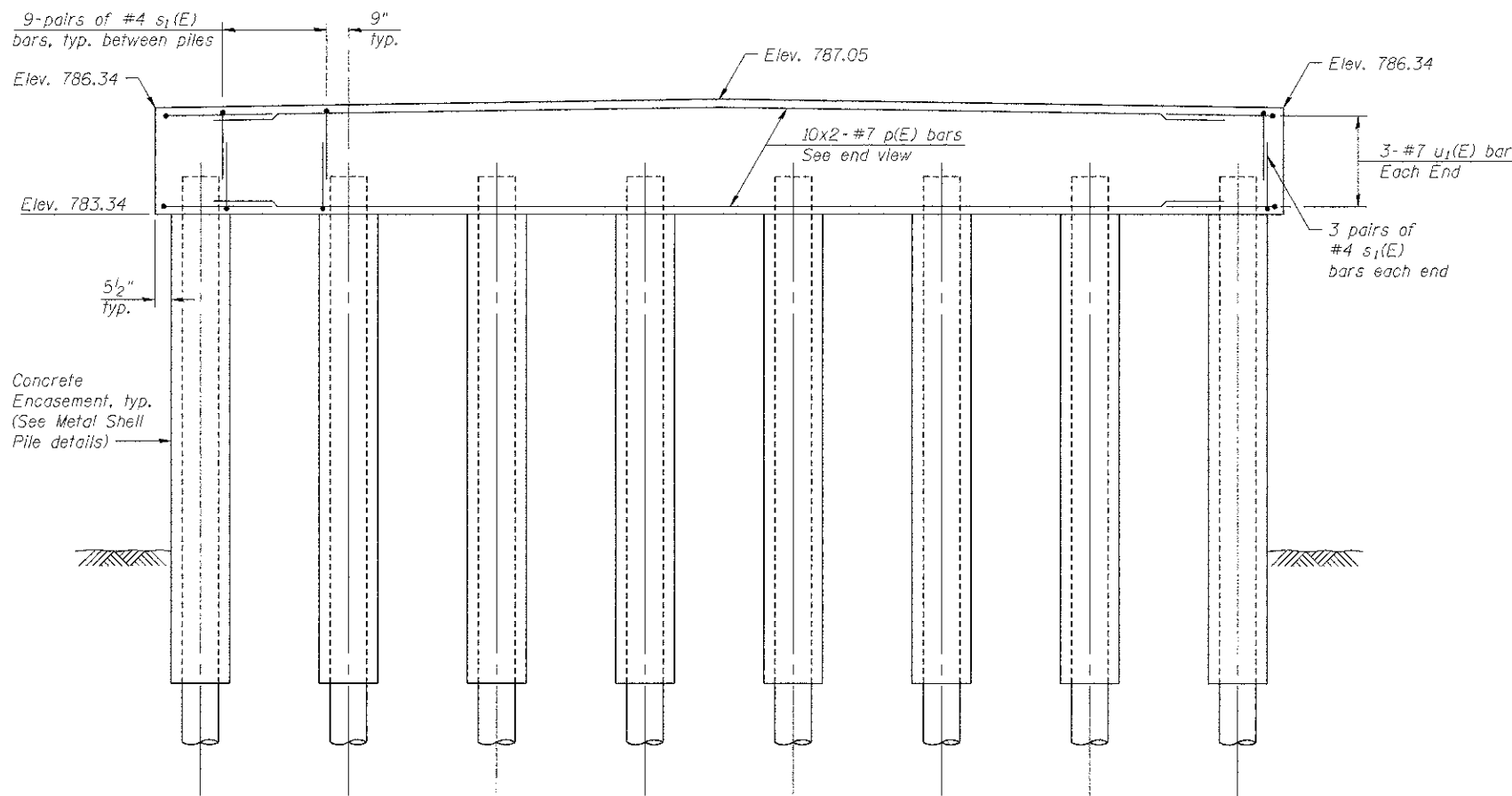


BARS u₁(E)

MINIMUM BAR LAP
 #7 bar = 5'-10"



END VIEW



ELEVATION
 (Looking East)

BILL OF MATERIAL

| Bar | No. | Size | Length | Shape |
|--|-----|---------|--------|-------|
| p(E) | 20 | #7 | 21'-8" | — |
| s ₁ (E) | 138 | #4 | 8'-1" | □ |
| u ₁ (E) | 6 | #7 | 16'-3" | ⊂ |
| Cofferdam Excavation | | Cu. Yd. | | 43 |
| Cofferdam (Type I) (Location-1) | | Each | | 1 |
| Concrete Structures | | Cu. Yd. | | 17 |
| Reinforcement Bars, Epoxy Coated | | Pound | | 1,830 |
| Furnishing Metal Shell Piles, 14"x0.312" | | Foot | | 196 |
| Driving Piles | | Foot | | 196 |
| Test Pile Metal Shells | | Each | | 1 |
| Concrete Encasement | | Cu. Yd. | | 12 |
| Pile Shoes | | Each | | 8 |
| Concrete Sealer | | Sq. Ft. | | 411 |

Notes:
 Space reinforcement in cap to miss anchor dowel rods.
 For details of piles and concrete encasement, see Sheet 15 of 27.
 Bar indicated thus 10x2-#5 ect. indicates 10 lines of bars with 2 lengths per line.
 Apply Concrete Sealer to top and sides of pier cap.
 See Sheet 15 of 27 for Concrete Encasement details.
 See Erosion Control sheet for location of cofferdam.

FILE NAME = s:\p1\6800-08\91\B42\07\mcrs\cadd\sheet\structural\056-3192-63666-013-PIER.dgn