

STATE OF ILLINOIS
DEPARTMENT OF TRANSPORTATION
DIVISION OF HIGHWAYS

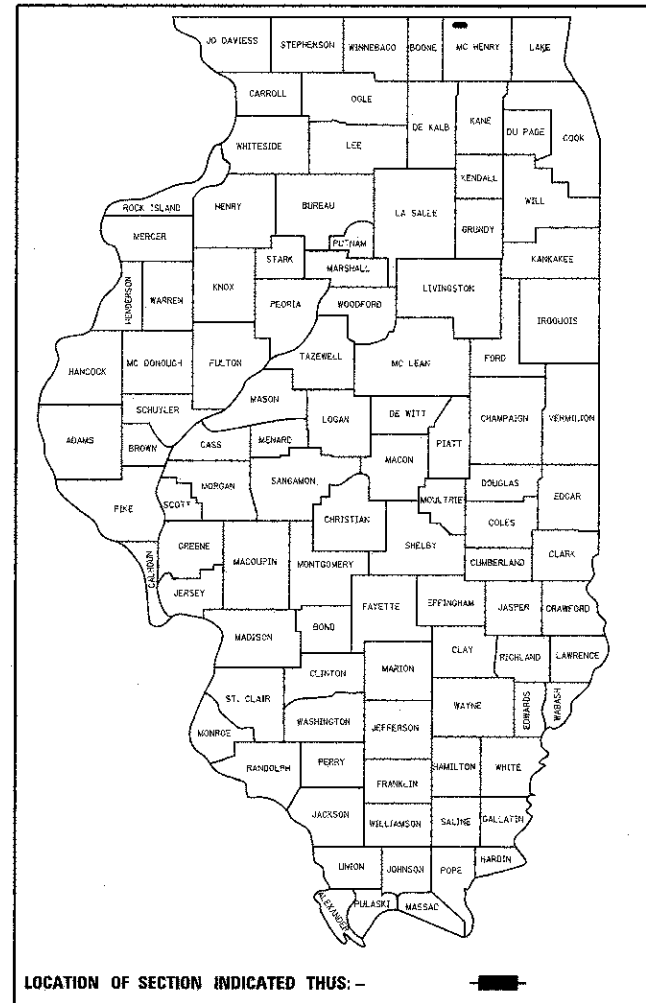
FINAL - 100% SUBMITTAL

PLANS FOR PROPOSED FEDERAL AID HIGHWAY

FAS 0028 (LAWRENCE ROAD) BRIDGE OVER PISCASAW CREEK
SECTION 08-00355-01-BR
PROJECT BRS-0028(109)
McHENRY COUNTY
BRIDGE REPLACEMENT
JOB C-91-472-11

WEIDNER ROAD RECONSTRUCTION
BEGIN IMPROVEMENT AT STA. 5+00.00
END IMPROVEMENT AT STA. 7+12.00

EX. S.N. 056-3010
PR. S.N. 056-3184



LOCATION OF SECTION INDICATED THUS: - [shaded box]

**PROJECT LOCATED IN CHEMUNG TOWNSHIP
IN UNINCORPORATED MCHENRY COUNTY**

STATE OF ILLINOIS DEPARTMENT OF TRANSPORTATION DIVISION OF HIGHWAYS	
APPROVED	August 14 2012 <i>Joseph R. Kozlowski, Jr.</i> COUNTY OF MCHENRY, COUNTY ENGINEER
PASSED	August 29 2012 <i>Charles C. Hall</i> DISTRICT ONE ENGINEER OF LOCAL ROADS & STREETS
RELEASING FOR BID BASED ON LIMITED REVIEW	August 29 2012 <i>John Fortmann</i> DEPUTY DIRECTOR OF HIGHWAYS, REGION ONE ENGINEER

**PRINTED BY THE AUTHORITY
OF THE STATE OF ILLINOIS**

INDEX OF SHEETS

- 1 COVER SHEET
- 2 GENERAL NOTES
- 3-5 SUMMARY OF QUANTITIES
- 6 TYPICAL SECTIONS
- 7-9 SCHEDULES OF QUANTITIES
- 10 ALIGNMENT, TIES, AND BENCHMARKS
- 11 DETOUR PLAN
- 12-15 MAINTENANCE OF TRAFFIC PLANS
- 16-17 REMOVAL PLAN
- 18-20 PLAN AND PROFILE
- 21-22 PAVEMENT MARKING LANDSCAPING AND SIGNING PLAN
- 23-30 EROSION & SEDIMENT CONTROL PLANS
- 31-32 PLAT OF HIGHWAYS
- 33-65 STRUCTURAL PLANS
- 66-68 CONSTRUCTION DETAILS
- 69-74 DISTRICT ONE DETAILS
- 75-87 CROSS SECTIONS

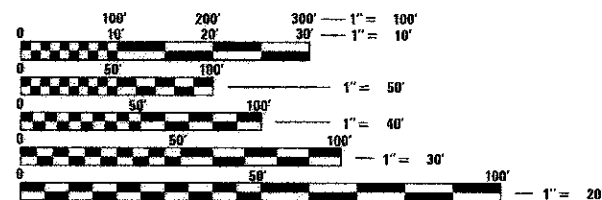
HIGHWAY STANDARDS

- 001006 DECIMAL OF AN INCH AND OF A FOOT
- 000001-06 STANDARD SYMBOLS, ABBREVIATIONS AND PATTERNS
- 001001-02 AREAS OF REINFORCEMENT BARS
- 280001-06 TEMPORARY EROSION CONTROL SYSTEMS
- 420401-08 BRIDGE APPROACH PAVEMENT CONNECTOR
- 420701-02 PAVEMENT FABRIC
- 515001-03 NAME PLATE FOR BRIDGES
- 542301-03 PRECAST REINFORCED CONCRETE FLARED END SECTION
- 601101-01 CONCRETE HEADWALL FOR PIPE DRAIN
- 630001-10 STEEL PLATE BEAM GUARDRAIL
- 630301-05 SHOULDER WIDENING FOR TYPE 1 (SPECIAL) GUARDRAIL TERMINALS
- 635006-03 REFLECTOR AND TERMINAL MARKER PLACEMENT
- 635011-02 REFLECTOR MARKER AND MOUNTING DETAILS
- 664001-02 CHAIN LINK FENCE
- 701001-02 OFF-RD OPERATIONS, 2L, 2W, MORE THAN 15' (4.5m) AWAY
- 701006-03 OFF-RD OPERATIONS, 2L, 2W, 15' (4.5m) TO 24' (600mm) FROM PAVEMENT EDGE
- 701011-02 OFF-RD MOVING OPERATIONS, 2L, 2W, DAY ONLY
- 701201-04 LANE CLOSURE, 2L, 2W, DAY ONLY, FOR SPEEDS ≥ 45MPH
- 701206-03 LANE CLOSURE, 2L, 2W, NIGHT ONLY, FOR SPEEDS ≥ 45MPH
- 701301-04 LANE CLOSURE, 2L, 2W, SHORT TIME OPERATIONS
- 701311-03 LANE CLOSURE, 2L, 2W, MOVING OPERATIONS - DAY ONLY
- 701321-12 LANE CLOSURE, 2L, 2W, BRIDGE REPAIR WITH BARRIER
- 701326-04 LANE CLOSURE, 2L, 2W, PAVEMENT WIDENING, FOR SPEEDS ≥ 45MPH
- 701901-02 TRAFFIC CONTROL DEVICES
- 704001-07 TEMPORARY CONCRETE BARRIER
- 720001-01 SIGN PANEL MOUNTING DETAILS
- 720011-01 METAL POSTS FOR SIGNS, MARKERS & DELINEATORS
- 729001-01 APPLICATIONS OF TYPES A & B METAL POSTS (FOR SIGNS & MARKERS)
- 780001-03 TYPICAL PAVEMENT MARKINGS

- 530106 LONG-SPAN GUARDRAIL OVER CULVERT
- 665001-02 ELECTRICAL SERVICE INSTALLATION DETAIL
- 805001-01 WOVEN WIRE FENCE

DESIGN DESIGNATION

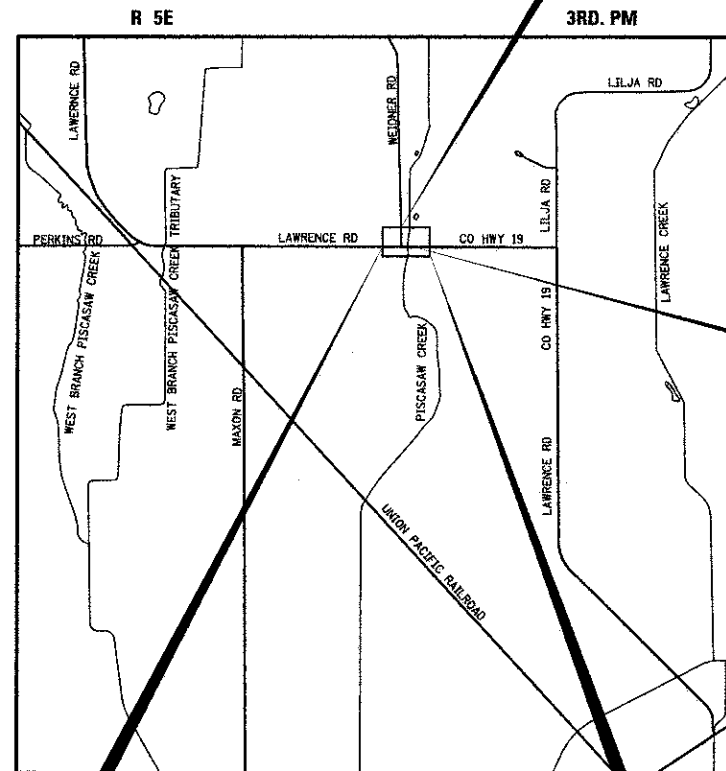
LAWRENCE RD - MAJOR COLLECTOR POSTED SPEED LIMIT LAWRENCE RD: 55 MPH
ADT LAWRENCE RD: 300 (2007) DESIGN SPEED LIMIT LAWRENCE RD: 60 MPH
ADT LAWRENCE RD: 1,500 (2030)



FULL SIZE PLANS HAVE BEEN PREPARED USING STANDARD ENGINEERING SCALES. REDUCED SIZED PLANS WILL NOT CONFORM TO STANDARD SCALES. IN MAKING MEASUREMENTS ON REDUCED PLANS, THE ABOVE SCALES MAY BE USED.

J.U.L.I.E.
 JOINT UTILITY LOCATION INFORMATION FOR EXCAVATION
 1-800-892-0123
 OR 811

CONTRACT NO. 63694

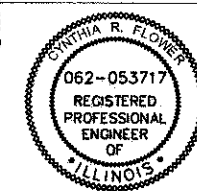


LOCATION MAP

MAP SCALE: NTS
 CHEMUNG TOWNSHIP
 LAWRENCE ROAD GROSS AND
 NET LENGTH = 1256 FT. = 0.24 MI.
 WEIDNER ROAD GROSS AND
 NET LENGTH = 212 FT. = 0.04 MI.

TOTAL GROSS AND NET LENGTH = 1468.0 FT = 0.28 MI.

LAWRENCE ROAD RECONSTRUCTION
END FULL DEPTH IMPROVEMENTS
AT STA. 209+70.00
END RESURFACING
AT STA. 213+38.27



Cynthia R. Flower
 CYNTHIA R. FLOWER
 ILLINOIS REGISTERED PROFESSIONAL ENGINEER NO. 062-053717
 MY LICENSE EXPIRES ON 11-30-13.

DATE 8/13/12

BL Bollinger, Lach & Associates, Inc.
 333 PIERCE ROAD SUITE 200 ITASCA, IL 60143
 P:(630) 438 6400 F:(630) 438 6444 www.bollingerlach.com
 ITASCA • CHICAGO • LAKE GENEVA • SOUTH BEND • INDIANAPOLIS