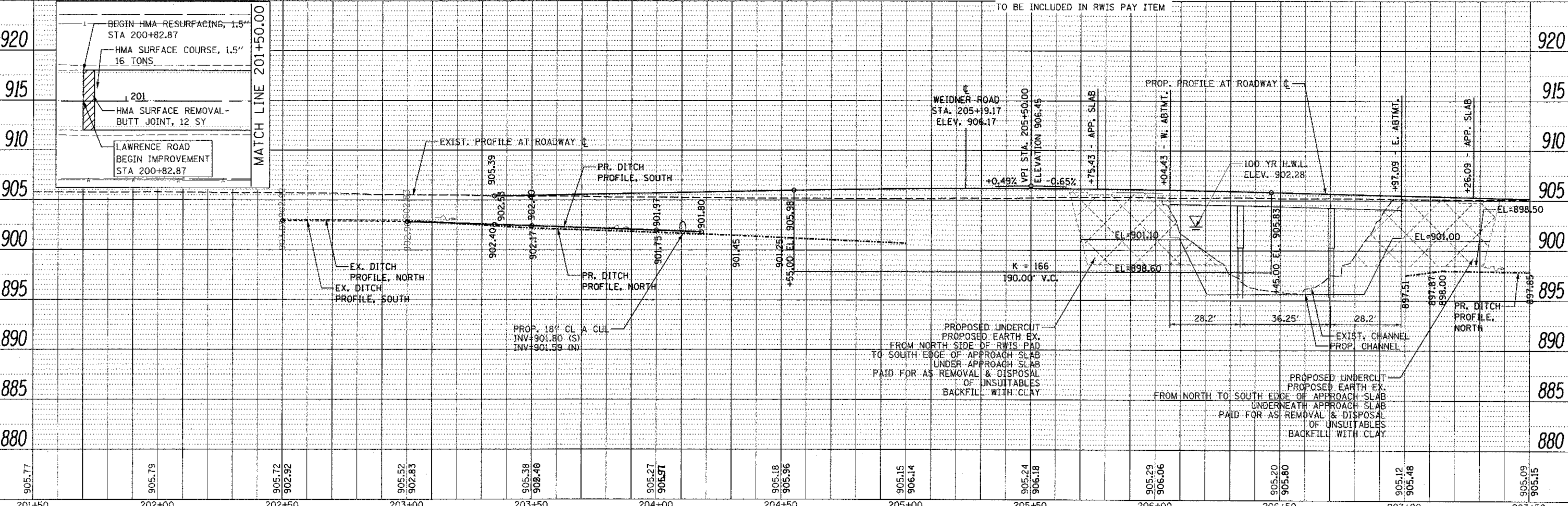
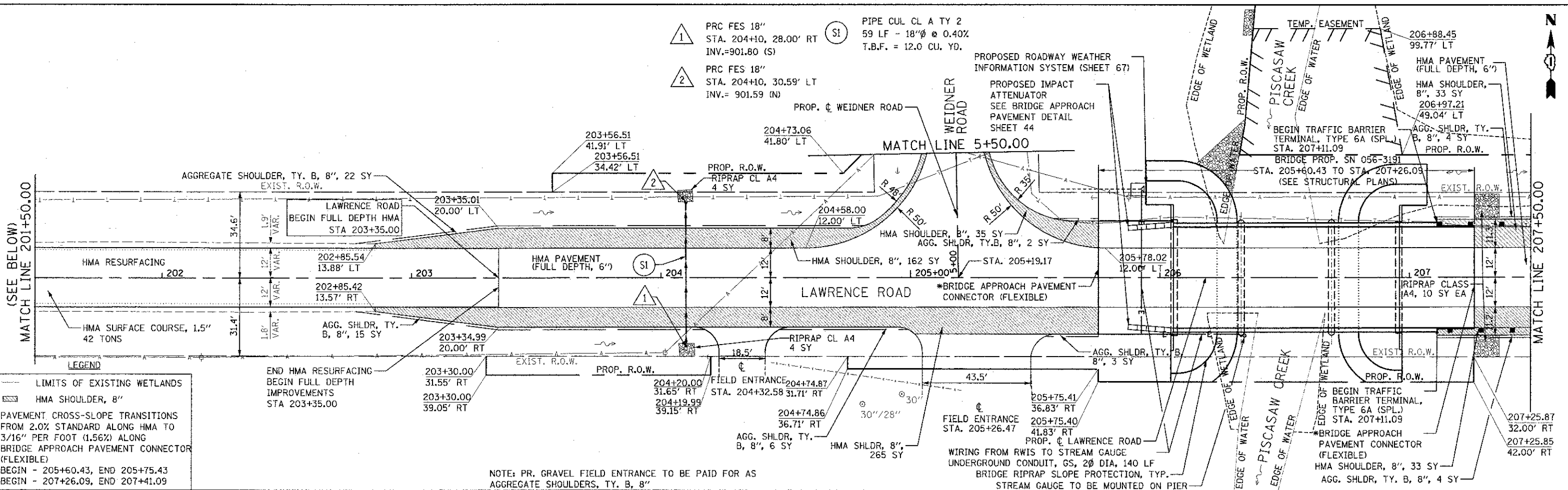


DATE	
BY	
NO.	
NO.	
NO.	
NO.	

DATE	
BY	
NO.	
NO.	
NO.	
NO.	

FILE NAME: W:\750-012 Lawrence Phase II\ROAD SHEETS\750-012-shz-Plan.dwg



905.77	905.79	905.72	902.92	905.52	902.83	905.38	902.46	905.27	905.97	905.18	905.96	905.15	906.14	905.24	906.18	905.29	906.06	905.20	905.80	905.12	905.48	905.09	905.15
201+50	202+00	202+50	203+00	203+50	204+00	204+50	205+00	205+50	206+00	206+50	207+00	207+50											

Bollinger, Lach & Associates, Inc.
ITASCA, ILLINOIS

USER NAME: = gellwanger
DESIGNED - GJE
DRAWN - GJE
CHECKED - CF
DATE - 08/17/12

REVISED -
REVISED -
REVISED -
REVISED -

**MCHENRY COUNTY
DIVISION OF TRANSPORTATION**

**LAWRENCE ROAD BRIDGE OVER PISCASAW CREEK
PLAN AND PROFILE**
1"=5' VT
SCALE: 1"=20' HZ
SHEET NO. 18 OF 87 SHEETS
STA. 200+82.87 TO STA. 207+50.00

F.A.S. RTE.	SECTION	COUNTY	TOTAL SHEETS	SHEET NO.
0028	08-00355-01-BR	MCHENRY	87	18
CONTRACT NO. 63694			ILLINOIS FED. AID PROJECT	