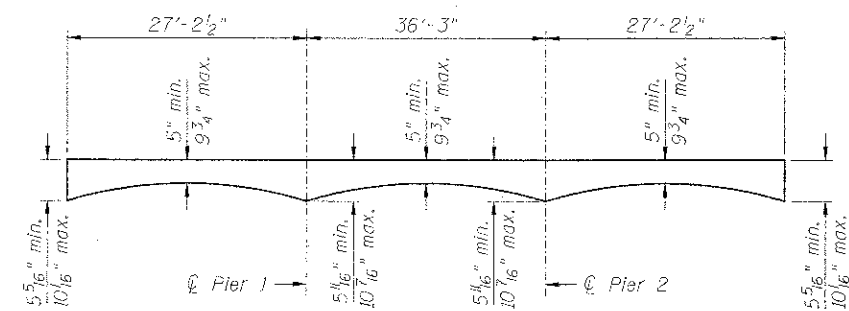
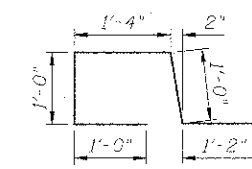


**SUPERSTRUCTURE
BILL OF MATERIAL**

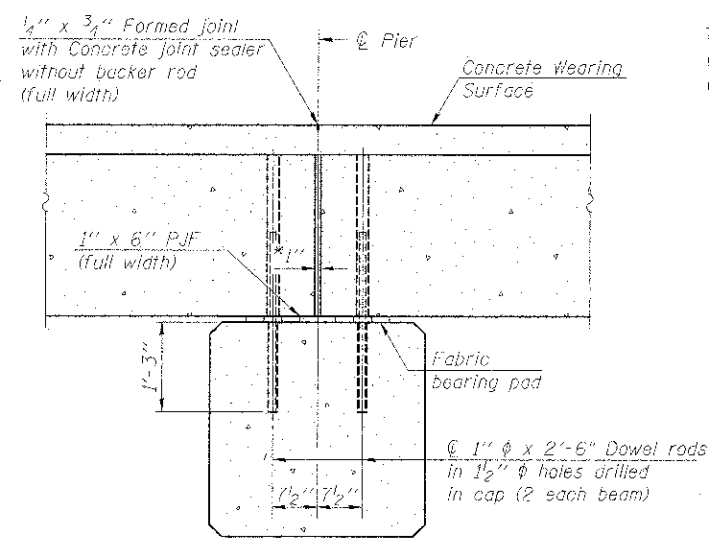
Bar	No.	Size	Length	Shape	
d(E)	92	#4	15'-0"	—	
a ₁ (E)	92	#4	28'-4"	—	
a ₂ (E)	182	#4	6'-0"	—	
a ₃ (E)	184	#4	9'-10"	—	
b(E)	138	#4	31'-10"	—	
b ₁ (E)	88	#4	24'-7"	—	
d(E)	244	#5	5'-6"	┌	
e(E)	8	#5	26'-10"	—	
e ₁ (E)	4	#5	35'-11"	—	
Reinforcement Bars, Epoxy Coated				Pound	10,760
Concrete Wearing Surface (Variable Depth)				Cu. Yd.	90
Bar Splicers				Each	92
Bridges Deck Grooving				Sq. Yd.	390
Protective Coat				Sq. Yd.	454
Concrete Superstructure				Cu. Yd.	5.6



REINFORCED CONCRETE WEARING SURFACE PROFILE



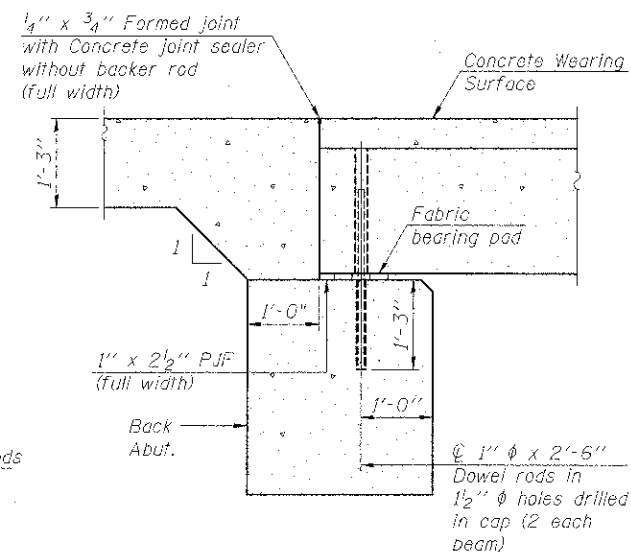
BAR d(E)



SECTION B-B THRU PIER

(With concrete wearing surface)

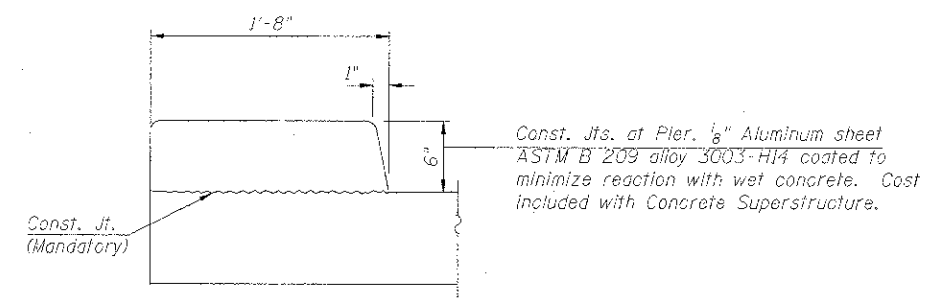
* 1" joint shall be filled with non-shrink grout. Dimension may vary to accommodate tolerance in beam length.



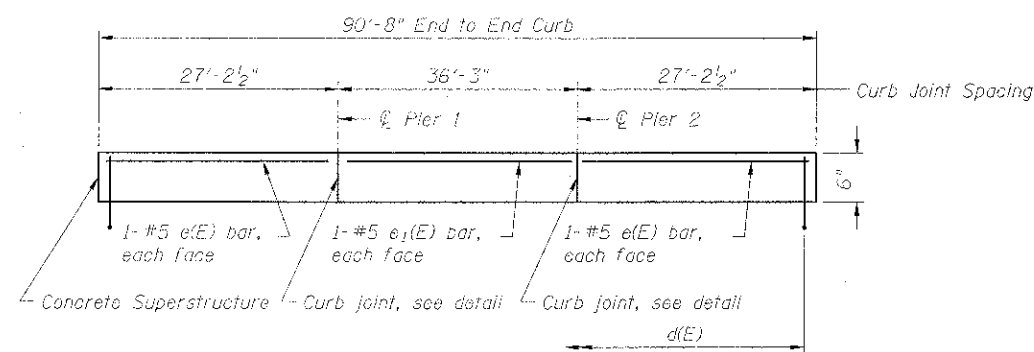
SECTION A-A THRU ABUTMENT

(With concrete wearing surface)

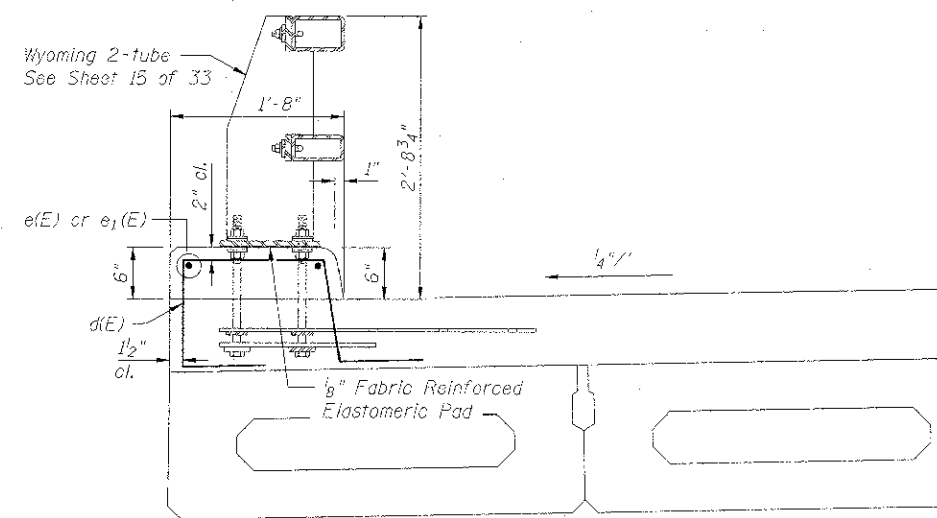
Notes:
All concrete wearing surfaces shall be placed prior to casting approach slab. See sheet 20 of 33 for fabric bearing pad details.



CURB JOINT DETAILS



INSIDE ELEVATION OF CURB



SECTION THRU CURB

FILE NAME: W:\750-012 Lawrence Phase II\CAD SHEETS\STRUCTURE\12562104 006 211.dgn



Bollinger, Lach & Associates, Inc.
MASCAS, ILLINOIS

USER NAME: j_labor-gls	DESIGNED: JMT	REVISED: -
PLOT SCALE: -	CHECKED: JJI	REVISED: -
PLOT DATE: 10/3/2012	DRAWN: GM	REVISED: -
	CHECKED: JJI	REVISED: -

**McHENRY COUNTY
DIVISION OF TRANSPORTATION
LAWRENCE ROAD BRIDGE OVER PISCASAW CREEK**

**SUPERSTRUCTURE DETAILS
STRUCTURE NO. 056-3184**

SHEET NO. 11 OF 33 SHEETS

F.A.S. RTE. 0028	SECTION 08-0C355-01-BR	COUNTY McHENRY	TOTAL SHEETS 87	SHEET NO. 43
			CONTRACT NO. 63694	

ILLINOIS FED. AID PROJECT