

Notes:

See Sheets 12 & 13 of 33 for Detail A and View B-B.

Approach slab concrete shall be paid for as Concrete Superstructure.

Approach footing concrete shall be paid for as Concrete Structures.

Reinforcement shall be paid for as Reinforcement Bars, Epoxy Coated.

For $v_1(E)$ bar details, See Sheets 21 & 22 of 33.

The approach footing maximum applied service bearing pressure (Q_{max}) = 2.0 ksf.

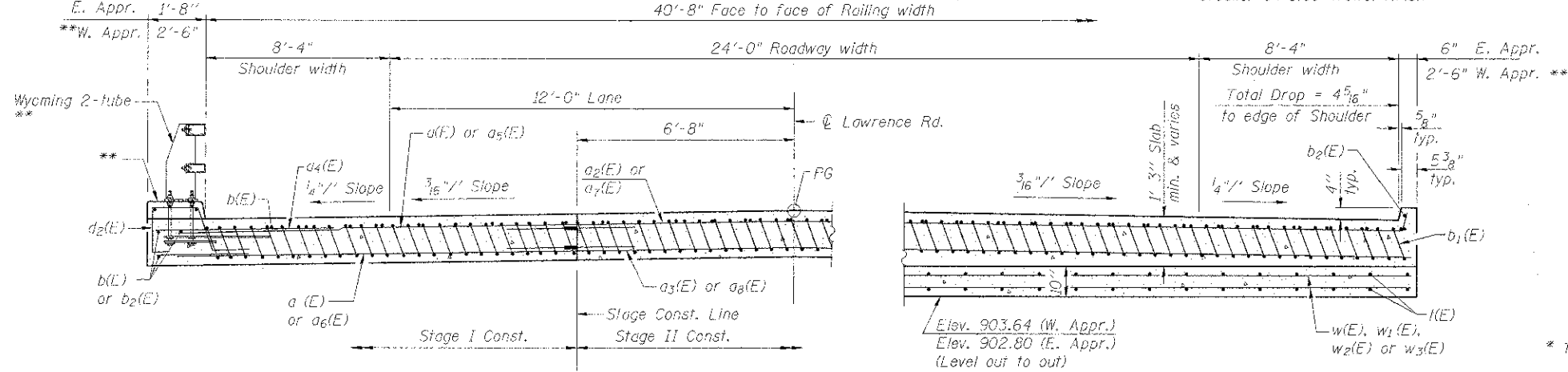
For bar splicer details, see sheet 25 of 33.

Cost of excavation for approach footing included with Concrete Structures.

For Porous Granular Embankment (Special) and drainage treatment details, see Sheet 1 of 33.

For additional Wyoming 2-Tube Steel Railing details, see sheets 15 & 16 of 33.

See Sheet 17 of 33 for rail post spacing.



* Till #9 $b_1(E)$ bars as required to maintain clearance.

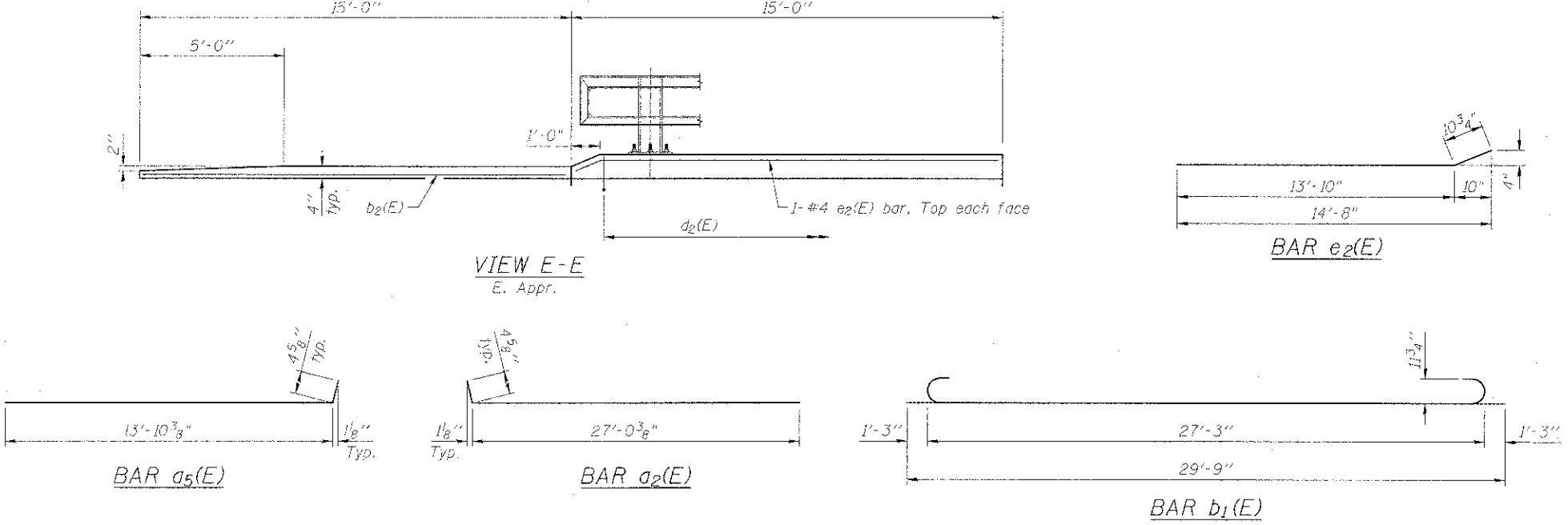
*** Cost included with Concrete Superstructure.

WEST APPROACH
BILL OF MATERIAL

Bar	No.	Size	Length	Shape
$a_1(E)$	25	#4	15'-4"	—
$a_2(E)$	46	#5	15'-4"	—
$a_7(E)$	25	#4	29'-8"	—
$a_8(E)$	45	#5	29'-8"	—
$b(E)$	41	#4	29'-8"	—
$b_1(E)$	110	#9	29'-9"	—
$k(E)$	96	#4	9'-8"	—
$w(E)$	40	#5	15'-4"	—
$w_3(E)$	40	#5	29'-8"	—
Concrete Superstructure	Cu. Yd.		78.7	
Concrete Structures	Cu. Yd.		14.1	
Reinforcement Bars, Epoxy Coated	Pound		17,350	
Bar Splicers	Each		111	
Bridge Deck Grooving	Sq. Yd.		129	
Protective Coat	Sq. Yd.		153	

EAST APPROACH
BILL OF MATERIAL

Bar	No.	Size	Length	Shape
$a_2(E)$	25	#4	27'-5"	—
$a_3(E)$	46	#5	27'-2"	—
$a_4(E)$	24	#6	6'-6"	—
$a_5(E)$	25	#4	14'-3"	—
$a_6(E)$	46	#5	13'-10"	—
$b(E)$	35	#4	29'-8"	—
$b_1(E)$	100	#9	29'-9"	—
$b_2(E)$	8	#4	14'-8"	—
$d_2(E)$	40	#5	6'-3"	—
$e_2(E)$	4	#4	14'-9"	—
$k(E)$	86	#4	9'-8"	—
$w_1(E)$	40	#5	27'-2"	—
$w_2(E)$	40	#5	13'-10"	—
Concrete Superstructure	Cu. Yd.		72.0	
Concrete Structures	Cu. Yd.		12.9	
Reinforcement Bars, Epoxy Coated	Pound		16,050	
Bar Splicers	Each		111	
Bridge Deck Grooving	Sq. Yd.		129	
Protective Coat	Sq. Yd.		148	



(Sheet 3 of 3)

FILE NAME = WY05-012 Lawrence Phase INCADD SHEET 15 Structural\W050114 002 014.dgn

Bollinger, Lach & Associates, Inc.
ITASCA, ILLINOIS

USER NAME = jtabler-gte	DESIGNED JMT	REVISED -
PLLOT SCALE	CHECKED JJI	REVISED -
PLLOT DATE = 10/3/2012	DRAWN GM	REVISED -
	CHECKED JJI	REVISED -

McHENRY COUNTY
DIVISION OF TRANSPORTATION
LAWRENCE ROAD BRIDGE OVER PISCASAW CREEK

BRIDGE APPROACH SLAB DETAILS
STRUCTURE NO. 056-3184

F.A.S. RTE.	SECTION	COUNTY	TOTAL SHEETS	SHEET NO.
0028	08-00355-01-BR	McHENRY	87	46
CONTRACT NO. 63694			[ILLINOIS] FED. AID PROJECT	

SHEET NO. 14 OF 33 SHEETS