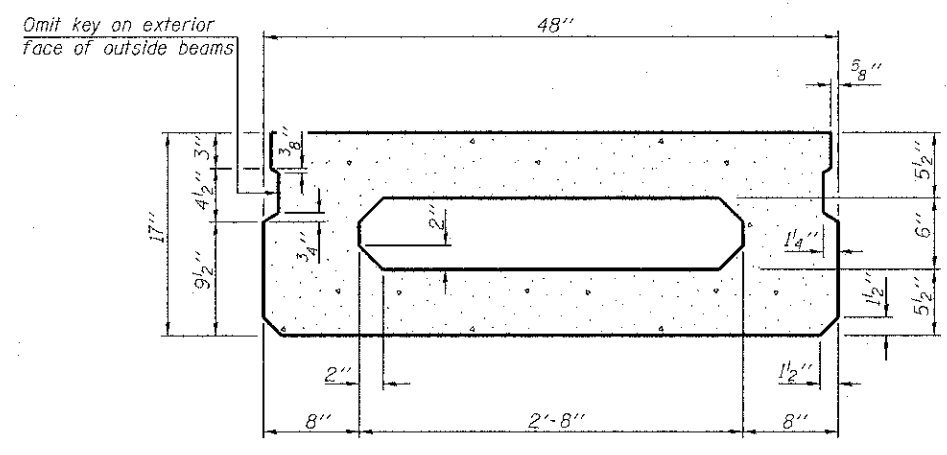
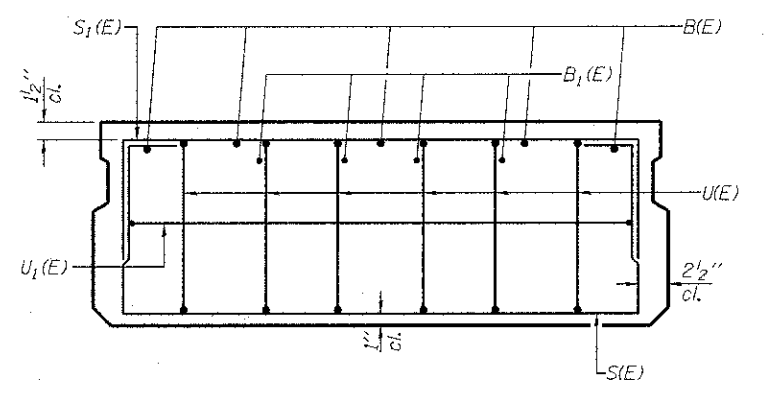


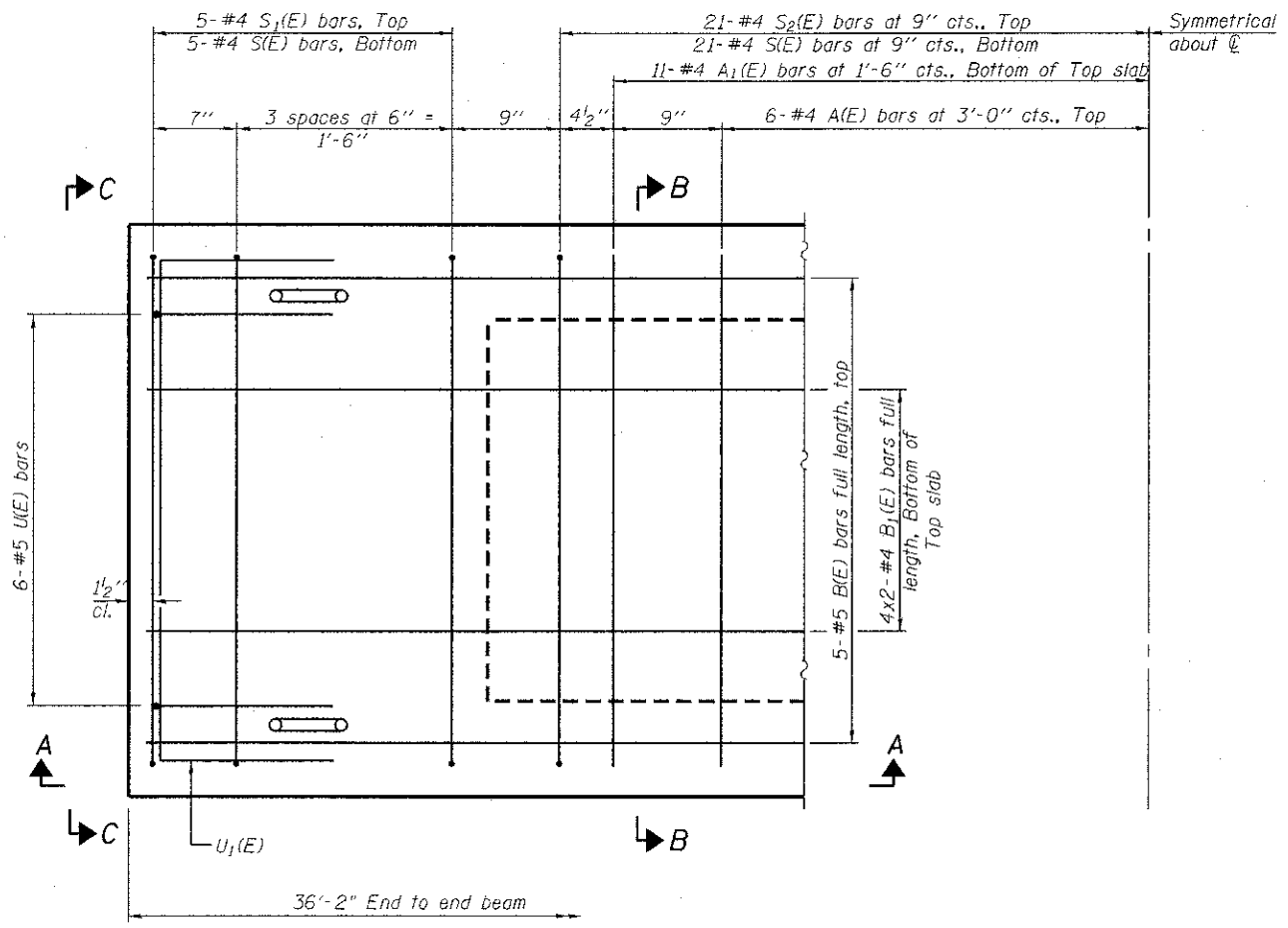
SECTION A-A



SECTION B-B
(Showing dimensions)

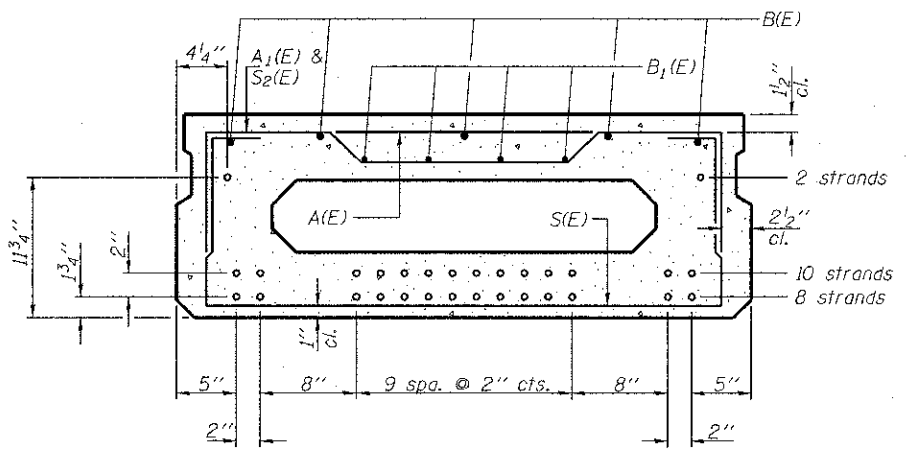


VIEW C-C



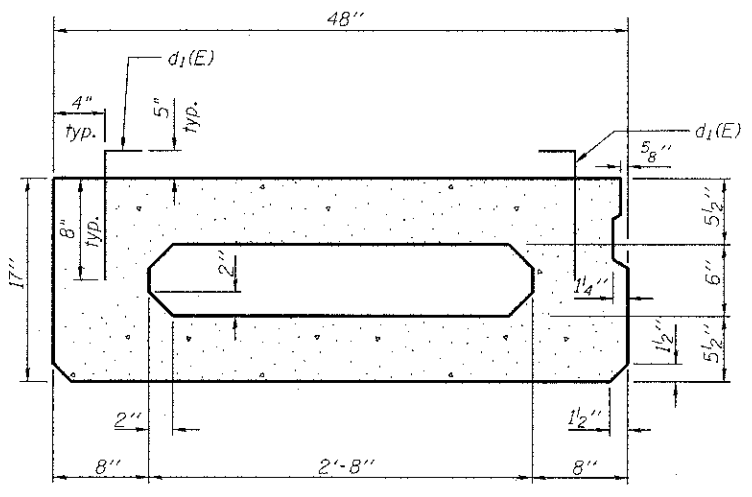
PLAN VIEW

Note: Spacing of S(E) and S2(E) bars may be adjusted up to 4" in the immediate area of the transverse tie diaphragms to miss the block outs for the transverse ties.



SECTION B-B

(Showing reinforcement and permissible strand locations)
Note: Place the number of strands specified in each row symmetrically about the centerline of beam in the permissible strand locations shown.



SECTION B-B
(Showing Outer Beam extra reinforcement)

MINIMUM BAR LAP
#4 bar = 2'-0"
#5 bar = 2'-6"

BAR LIST
ONE BEAM ONLY
(For information only)

Bar	No.	Size	Length	Shape
A(E)	11	#4	3'-7"	—
A1(E)	21	#4	3'-10"	~
B(E)	5	#5	35'-11"	—
B1(E)	8	#4	19'-0"	—
S(E)	52	#4	6'-9"	—
S1(E)	10	#4	5'-3"	—
S2(E)	42	#4	5'-6"	—
U(E)	12	#5	3'-8"	—
U1(E)	2	#4	6'-0"	—
d1(E)	50	#4	1'-9"	—

Note: See sheet 20 of 33 for additional details, notes and Bill of Material.
Bars indicated thus 4x2-#4 etc. indicates 4 lines of bars with 2 lengths per line.
* Additional reinforcement in Outer Beams Only See Sheet 20 of 33 for d1(E) bar details.

PD-1748-0

7-1-10

Bollinger, Lach & Associates, Inc.
ITASCA, ILLINOIS

USER NAME = gonzo
DESIGNED JMT
CHECKED JJT
DRAWN GM
CHECKED JJT
PLOT SCALE =
PLOT DATE = 8/16/2012

REVISED -
REVISED -
REVISED -
REVISED -

McHENRY COUNTY
DIVISION OF TRANSPORTATION
LAWRENCE ROAD BRIDGE OVER PISCASAW CREEK

17x48 PPC DECK BEAMS - 36'-2"
STRUCTURE NO. 056-3184
SHEET NO. 19 OF 33 SHEETS

F.A.S. RTE.	SECTION	COUNTY	TOTAL SHEETS	SHEET NO.
0028	08-00355-01-BR	McHENRY	87	51
CONTRACT NO. 63694				

ILLINOIS FED. AID PROJECT