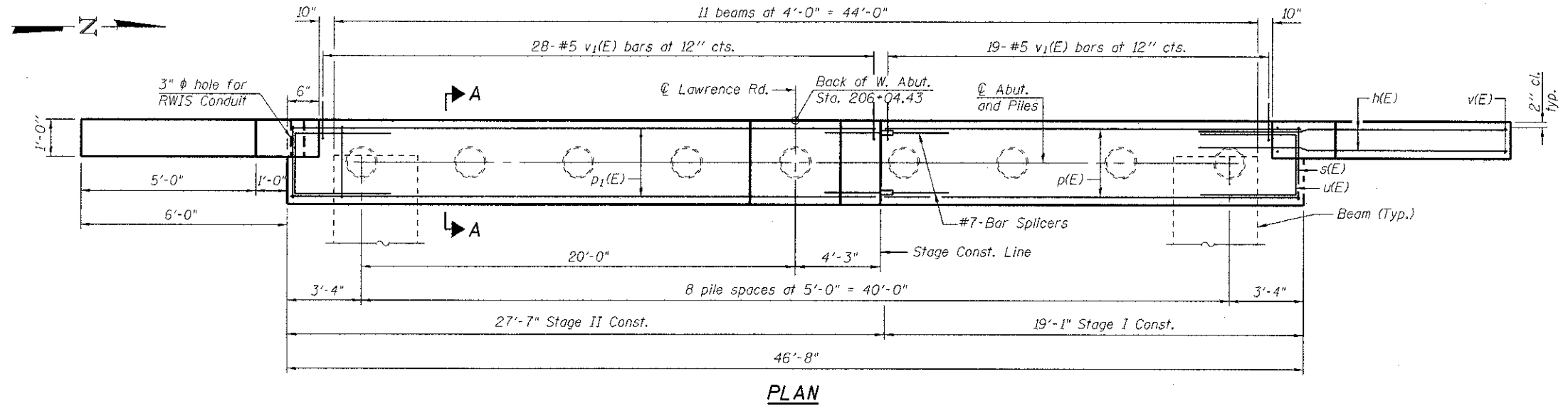


SECTION A-A



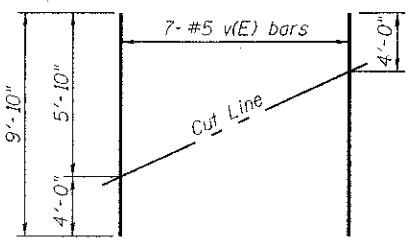
PLAN

BILL OF MATERIAL

Bar	No.	Size	Length	Shape	
v1(E)	36	#5	10'-5"	—	
p(E)	10	#7	18'-9"	—	
p1(E)	10	#7	27'-3"	—	
s(E)	96	#4	9'-1"	┌	
u(E)	10	#6	9'-10"	┌	
v(E)	14	#5	9'-10"	—	
v1(E)	47	#5	3'-6"	┌	
Structure Excavation				Cu. Yd.	104
Concrete Structures				Cu. Yd.	21.6
Reinforcement Bars, Epoxy Coated				Pound	2380
Furnishing Metal Shell Piles 12"x0.25"				Foot	328
Driving Piles				Foot	328
Test Pile Metal Shells				Each	1
Bar Splicers				Each	10
Protective Coat				Sq. Yd.	9

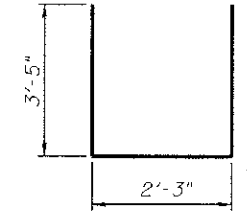
PILE DATA

Type: Metal Shell Piles 12" ϕ with 0.25" walls
 Nominal Required Bearing: 264 kips
 Factored Resistance Available: 145 kips
 Est. Length: 41'
 No. Production Piles: 8
 No. Test Piles: 1

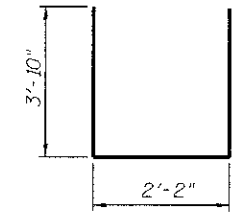


FIELD CUTTING DIAGRAM

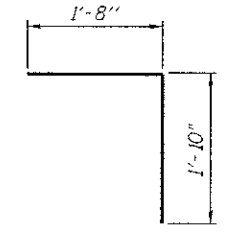
Order v(E) bars full length. Cut as shown and use remainder of bars in opposite face.



BAR s(E)



BAR u(E)



BAR v1(E)

AD-1721-0

7-1-10

Bollinger, Lach & Associates, Inc.
 ITASCA, ILLINOIS

USER NAME = gonzalo	DESIGNED JMT	REVISED -
PILOT SCALE =	CHECKED JJI	REVISED -
PLOT DATE = 8/17/2012	DRAWN GM	REVISED -
	CHECKED JJI	REVISED -

McHENRY COUNTY
DIVISION OF TRANSPORTATION
LAWRENCE ROAD BRIDGE OVER PISCASAW CREEK

WEST ABUTMENT
STRUCTURE NO. 056-3184
 SHEET NO. 21 OF 33 SHEETS

P.A.S. RTE.	SECTION	COUNTY	TOTAL SHEETS	SHEET NO.
0028	08-00355-01-BR	McHENRY	87	53
CONTRACT NO. 63694			ILLINOIS FED. AID PROJECT	