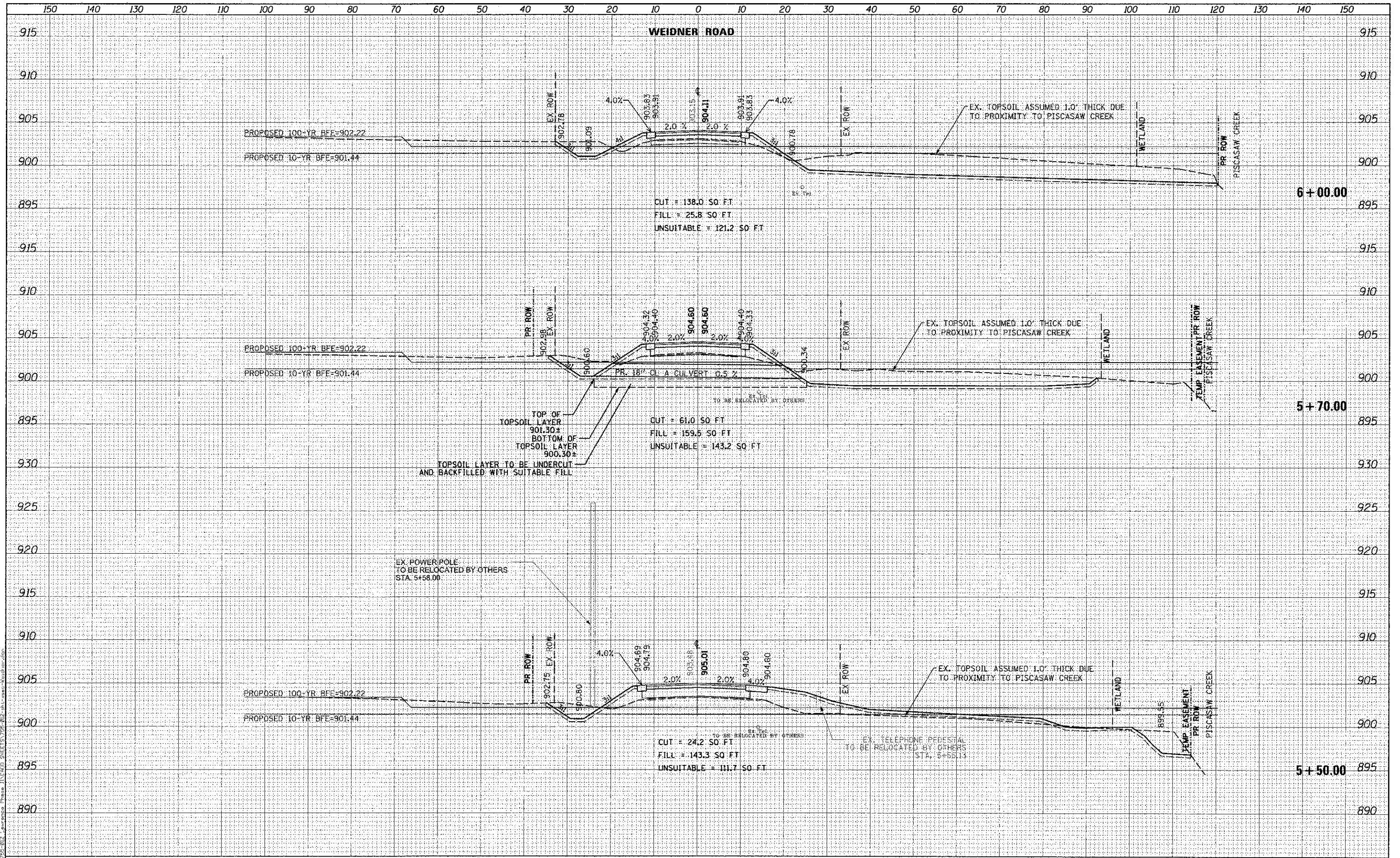


SURVEYED  
 SURVEY PLOTTED  
 NOTE BOOK  
 AREAS  
 AREAS CHECKED  
 NO.



<b>Bollinger, Lach &amp; Associates, Inc.</b> HASCA, ILLINOIS	USER NAME = golivanger PLOT SCALE = 10,000 1" = 100'	DESIGNED - GJE DRAWN - GJE CHECKED - CRF DATE - 08/17/12	REVISED - REVISED - REVISED - REVISED -	<b>MCHENRY COUNTY</b> <b>DIVISION OF TRANSPORTATION</b>	<b>LAWRENCE ROAD BRIDGE OVER PISCASAW CREEK</b> <b>WEIDNER ROAD CROSS SECTION</b> 1"=5' VT SCALE: 1"=10' HZ	SHEET NO. 86 OF 87 SHEETS STA. 5+50.00 TO STA. 6+00.00	F.A.S. RTE. 0028 SECTION 08-00355-01-BR COUNTY MCHENRY CONTRACT NO. 63694	TOTAL SHEETS 87 SHEET NO. 86
	ILLINOIS FED. AID PROJECT							