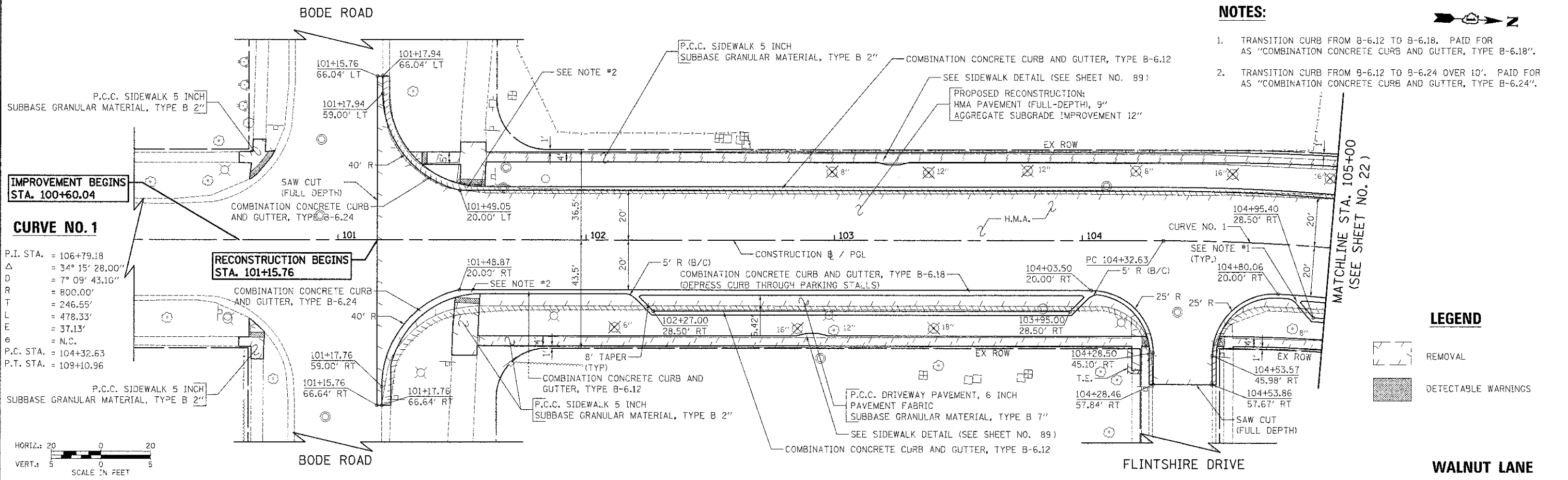


DATE	
BY	
REVISION	
NO.	
DESCRIPTION	
DATE	
BY	
REVISION	
NO.	
DESCRIPTION	
DATE	
BY	
REVISION	
NO.	
DESCRIPTION	

DATE	
BY	
REVISION	
NO.	
DESCRIPTION	
DATE	
BY	
REVISION	
NO.	
DESCRIPTION	
DATE	
BY	
REVISION	
NO.	
DESCRIPTION	

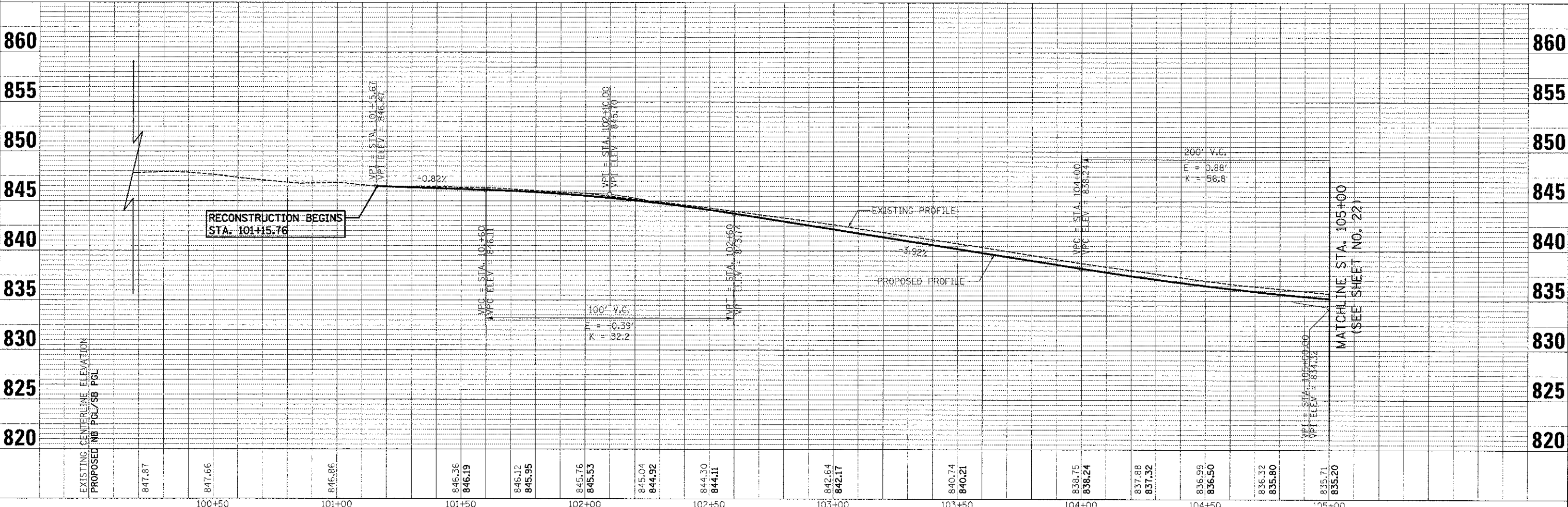
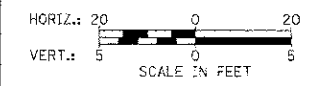


- NOTES:**
1. TRANSITION CURB FROM B-6.12 TO B-6.18. PAID FOR AS "COMBINATION CONCRETE CURB AND GUTTER, TYPE B-6.18".
  2. TRANSITION CURB FROM B-6.12 TO B-6.24 OVER 10'. PAID FOR AS "COMBINATION CONCRETE CURB AND GUTTER, TYPE B-6.24".

**LEGEND**

REMOVAL

DETECTABLE WARNINGS



FILE NAME =	USER NAME = djk	DESIGNED - JSM	REVISED -	<b>STATE OF ILLINOIS DEPARTMENT OF TRANSPORTATION</b>	<b>WALNUT LANE PLAN AND PROFILE</b>	F.A.U. R.T.E. = 2566	SECTION = 08-03094-00-PV	COUNTY = COOK	TOTAL SHEETS = 113	SHEET NO. = 21		
...:\07-PlanAndProf:\1\PP_01.dgn	PLOT SCALE = 20.0000" / 1"	DRAWN - JSM	REVISED -			SCALE: 1" = 20'	SHEET NO. 1 OF 5 SHEETS	STA. 101+15.67 TO STA. 105+00.00	CONTRACT NO. 63738			
	PLOT DATE = 8/15/2012	CHECKED - DJK	REVISED -			ILLINOIS FED. AID PROJECT W-9903494						