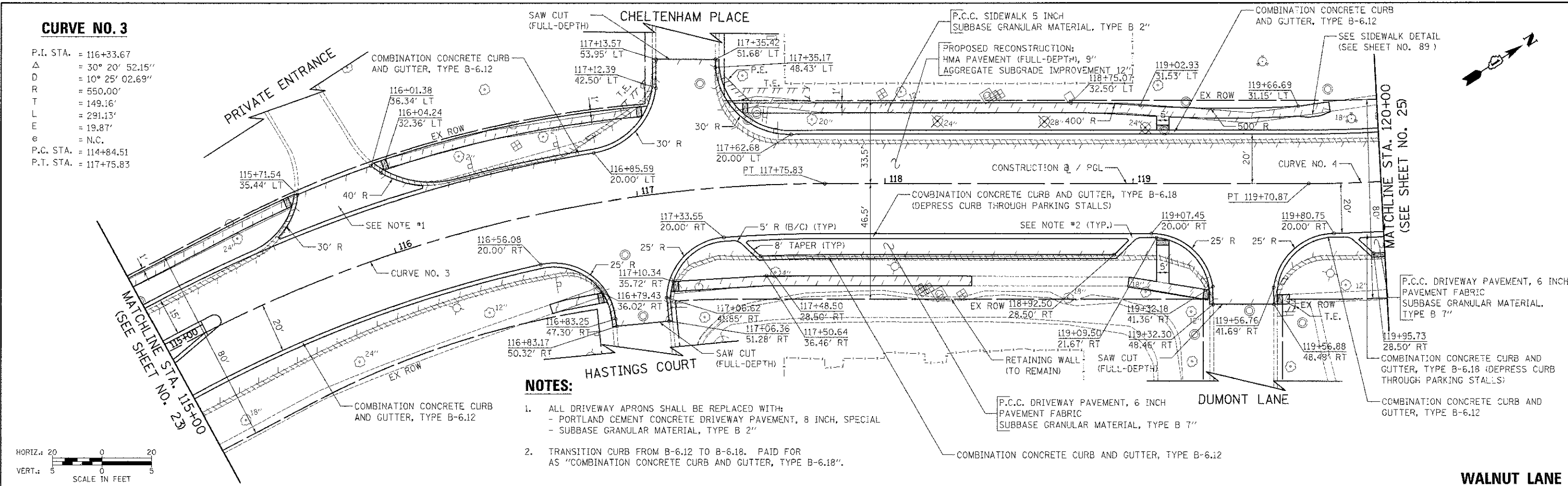


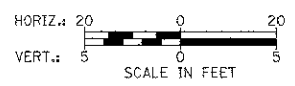
CURVE NO. 3

P.I. STA. = 116+33.67
 Δ = 30° 20' 52.15"
 D = 10° 25' 02.69"
 R = 550.00'
 T = 149.16'
 L = 291.13'
 E = 19.87'
 e = N.C.
 P.C. STA. = 114+84.51
 P.T. STA. = 117+75.83

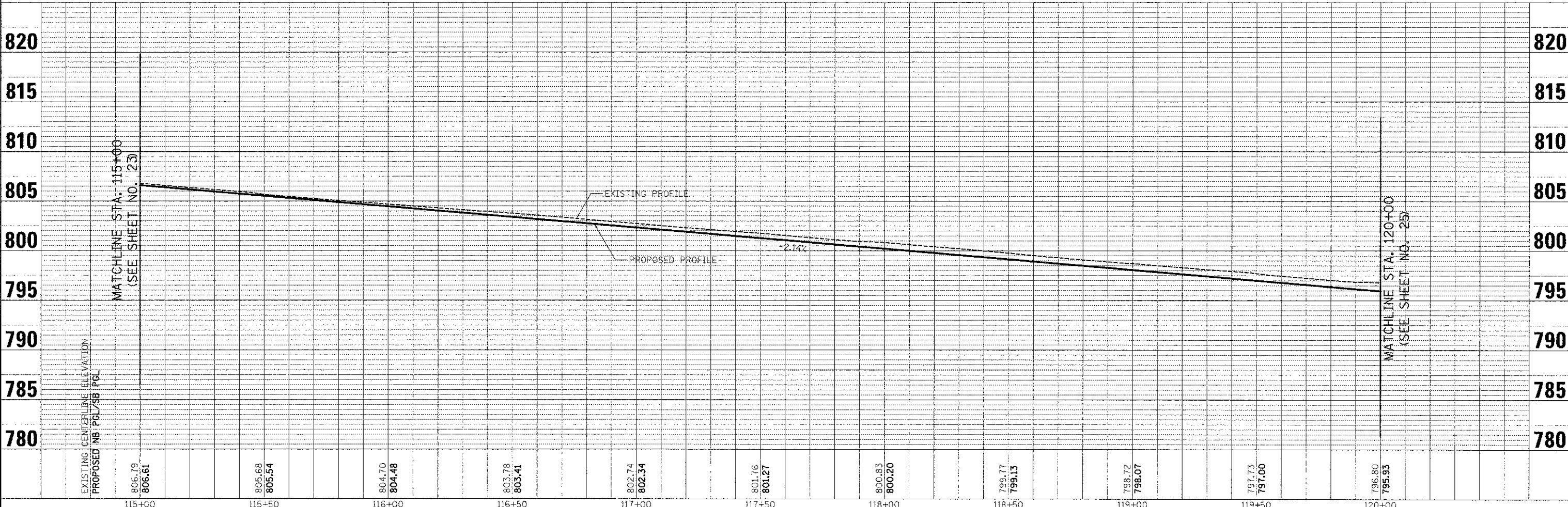
DATE	
BY	
REVISION	
NO.	
DESCRIPTION	
DATE	
BY	
REVISION	
NO.	
DESCRIPTION	
DATE	
BY	
REVISION	
NO.	
DESCRIPTION	



- NOTES:**
- ALL DRIVEWAY APRONS SHALL BE REPLACED WITH:
 - PORTLAND CEMENT CONCRETE DRIVEWAY PAVEMENT, 8 INCH, SPECIAL
 - SUBBASE GRANULAR MATERIAL, TYPE B 2"
 - TRANSITION CURB FROM B-6.12 TO B-6.18. PAID FOR AS "COMBINATION CONCRETE CURB AND GUTTER, TYPE B-6.18".



DATE	
BY	
REVISION	
NO.	
DESCRIPTION	
DATE	
BY	
REVISION	
NO.	
DESCRIPTION	
DATE	
BY	
REVISION	
NO.	
DESCRIPTION	



FILE NAME = ...N07-PlanAndProfile\p104.dgn	USER NAME = djc	DESIGNED - JSM	REVISION -	STATE OF ILLINOIS DEPARTMENT OF TRANSPORTATION	WALNUT LANE PLAN AND PROFILE	F.A.U. RTE. = 2556	SECTION = 08-00094-00-PV	COUNTY = COOK	TOTAL SHEETS = 113	SHEET NO. = 24	
PLOT SCALE = 20.0000 / in.	CHECKED - DJK	REVISION -	SCALE: 1" = 20'			SHEET NO. 4 OF 5 SHEETS	STA. 115+00.00 TO STA. 120+00.00	CONTRACT NO. 63738		ILLINOIS FED. AID PROJECT N-9003494	
PLOT DATE = 8/15/2012	DATE = 8/20/2012	REVISION -									