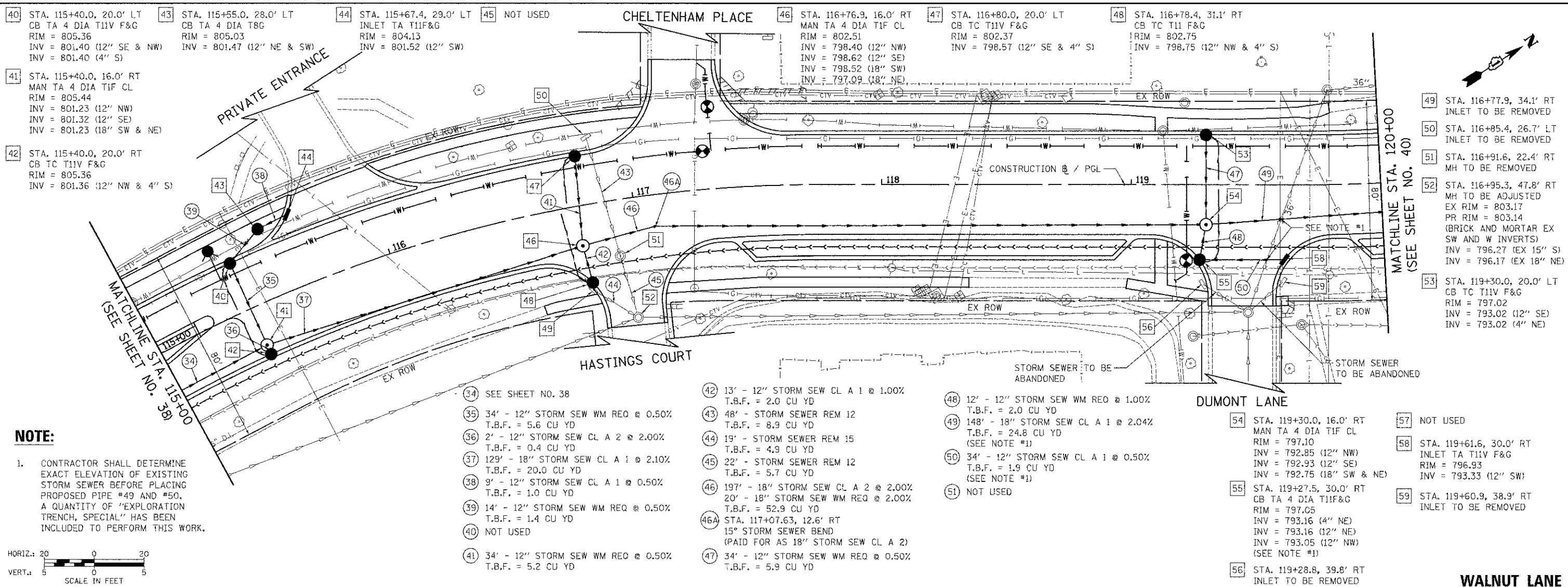


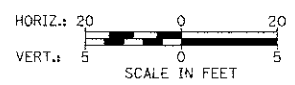
PLAN	SURVEYED	DATE
	PLOTTED	
	ALIGNED	
	CHECKED	
	FILED	
	NO.	
	NO.	
	NO.	
	NO.	

PROFILE	SURVEYED	DATE
	PLOTTED	
	GRADES CHECKED	
	STRUCTURE NOTATIONS OK'D	
	NO.	
	NO.	
	NO.	
	NO.	

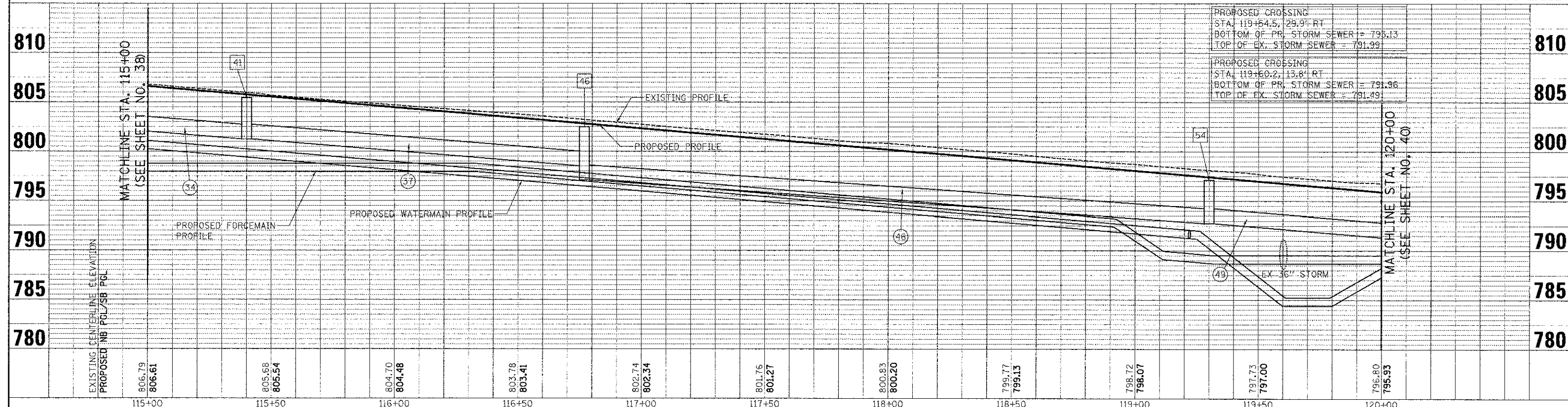


NOTE:

1. CONTRACTOR SHALL DETERMINE EXACT ELEVATION OF EXISTING STORM SEWER BEFORE PLACING PROPOSED PIPE #49 AND #50. A QUANTITY OF "EXPLORATION TRENCH, SPECIAL" HAS BEEN INCLUDED TO PERFORM THIS WORK.



- 34) SEE SHEET NO. 38
- 35) 34' - 12" STORM SEW WM REQ @ 0.50% T.B.F. = 5.6 CU YD
- 36) 2' - 12" STORM SEW CL A 2 @ 2.00% T.B.F. = 0.4 CU YD
- 37) 129' - 18" STORM SEW CL A 1 @ 2.10% T.B.F. = 20.0 CU YD
- 38) 9' - 12" STORM SEW CL A 1 @ 0.50% T.B.F. = 1.0 CU YD
- 39) 14' - 12" STORM SEW WM REQ @ 0.50% T.B.F. = 1.4 CU YD
- 40) NOT USED
- 41) 34' - 12" STORM SEW WM REQ @ 0.50% T.B.F. = 5.2 CU YD
- 42) 13' - 12" STORM SEW CL A 1 @ 1.00% T.B.F. = 2.0 CU YD
- 43) 48' - STORM SEWER REM 12 T.B.F. = 8.9 CU YD
- 44) 19' - STORM SEWER REM 15 T.B.F. = 4.9 CU YD
- 45) 22' - STORM SEWER REM 12 T.B.F. = 5.7 CU YD
- 46) 197' - 18" STORM SEW CL A 2 @ 2.00% 20' - 18" STORM SEW WM REQ @ 2.00% T.B.F. = 52.9 CU YD
- 46A) STA. 117+07.63, 12.6' RT 15° STORM SEWER BEND (PAID FOR AS 18" STORM SEW CL A 2)
- 47) 34' - 12" STORM SEW WM REQ @ 0.50% T.B.F. = 5.9 CU YD
- 48) 12' - 12" STORM SEW WM REQ @ 1.00% T.B.F. = 2.0 CU YD
- 49) 148' - 18" STORM SEW CL A 1 @ 2.04% T.B.F. = 24.8 CU YD (SEE NOTE #1)
- 50) 34' - 12" STORM SEW CL A 1 @ 0.50% T.B.F. = 1.9 CU YD (SEE NOTE #1)
- 51) NOT USED
- 54) STA. 119+30.0, 16.0' RT MAN TA 4 DIA TIF CL RIM = 797.10 INV = 792.85 (12" NW) INV = 792.93 (12" SE) INV = 792.75 (18" SW & NE)
- 55) STA. 119+27.5, 30.0' RT CB TA 4 DIA TIF&G RIM = 797.05 INV = 793.16 (4" NE) INV = 793.16 (12" NE) INV = 793.05 (12" NW) (SEE NOTE #1)
- 56) STA. 119+28.8, 39.8' RT INLET TO BE REMOVED
- 57) NOT USED
- 58) STA. 119+61.6, 30.0' RT INLET TA T11V F&G RIM = 796.93 INV = 793.33 (12" SW)
- 59) STA. 119+60.9, 38.9' RT INLET TO BE REMOVED



FILE NAME = ...VCU_04.dgn	USER NAME = djk	DESIGNED - JSM	REVISED -	STATE OF ILLINOIS DEPARTMENT OF TRANSPORTATION	WALNUT LANE DRAINAGE PLAN	F.A.H. RTE. = 2556	SECTION = 08-00094-00-PV	COUNTY = COOK	TOTAL SHEETS = 113	SHEET NO. = 39	
	PLOT SCALE = 20.0000' / in.	CHECKED - DJK	REVISED -			SCALE: 1/4" = 20'	SHEET NO. 4 OF 5 SHEETS	STA. 115+00.00 TO STA. 120+00.00	CONTRACT NO. 63738		
	PLOT DATE = 8/15/2012	DATE = 8/20/2012	REVISED -			ILLINOIS FED. AID PROJECT M-9003494					