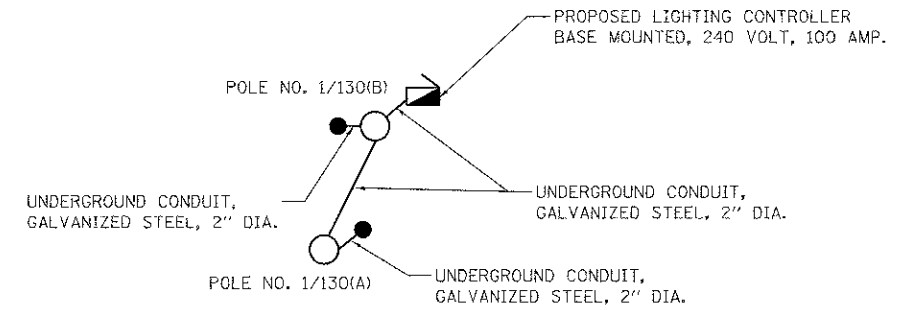


CONTROLLER CIRCUIT LOAD TABLE		
CIRCUIT NO.	RED @120V (AMPS)	BLACK @120V (AMPS)
A	9.9	9.9
B	8.6	8.6
SIGN SYSTEM	10.0	--
TOTAL	28.5	--

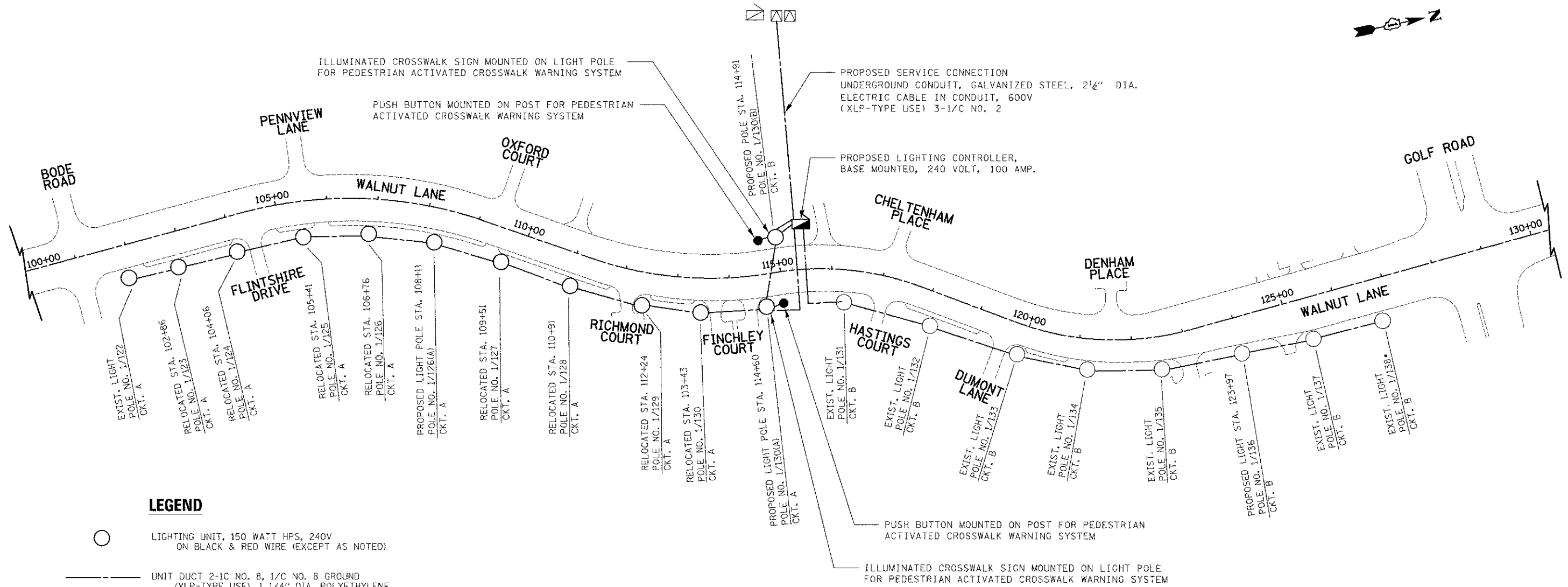
150 WATT HPS LUMINAIRE = 0.9 AMPS @ 240V
 • 250 WATT HPS LUMINAIRE = 1.4 AMPS @ 240V



**PEDESTRIAN ACTIVATED CROSSWALK
WARNING SYSTEM CONDUIT PLAN**

DATE	BY
PLAN	REVISED
NOTE BOOK NO.	ALIGNMENT CHECKED
	FIELD FILE NAME

DATE	BY
PROFILE	SURVEYED
NOTE BOOK NO.	GRADES CHECKED
	STRUCTURE NOTATION CHECKED



LEGEND

- LIGHTING UNIT, 150 WATT HPS, 240V ON BLACK & RED WIRE (EXCEPT AS NOTED)
- UNIT DUCT 2-1C NO. 8, 1/C NO. 8 GROUND (XLP-TYPE USE), 1 1/4" DIA. POLYETHYLENE
- ▶ PROPOSED LIGHTING CONTROLLER, BASE MOUNTED, 240 VOLT, 100 AMP
- PUSH BUTTON MOUNTED ON POST FOR PEDESTRIAN ACTIVATED CROSSWALK WARNING SIGN MOUNTED ON POST

FILE NAME * ...\\2536-L703-Wiring-Diagram.dgn

USER NAME * djh
 DESIGNED - SJC
 DRAWN - SJC
 CHECKED - DJK
 DATE - 8/20/2012

REVISED -
 REVISED -
 REVISED -
 REVISED -

**STATE OF ILLINOIS
DEPARTMENT OF TRANSPORTATION**

**WALNUT LANE
LIGHTING PLAN**

SCALE: NTS SHEET NO. 6 OF 6 SHEETS STA. 100+00 TO STA. 130+00

F.A.U. RTE.	SECTION	COUNTY	TOTAL SHEETS	SHEET NO.
2556	08-00094-00-PV	COOK	113	82
CONTRACT NO. 63738				
ILLINOIS FED. AID PROJECT M-90034941				