

STATE OF ILLINOIS  
DEPARTMENT OF TRANSPORTATION  
DIVISION OF HIGHWAYS

F. A. I. I. SHEET	SECTION	COUNTY	TOTAL SHEETS	SHEET NO.
1041	11-00030-00-RS	COOK	10	1
STA. 100+67		TO STA. 125+92		
FED. ROAD DIST. NO. 1		ILLINOIS	FED. AID PROJECT M-9003 (914)	

CONTRACT #63739

# PLANS FOR PROPOSED FEDERAL AID HIGHWAY

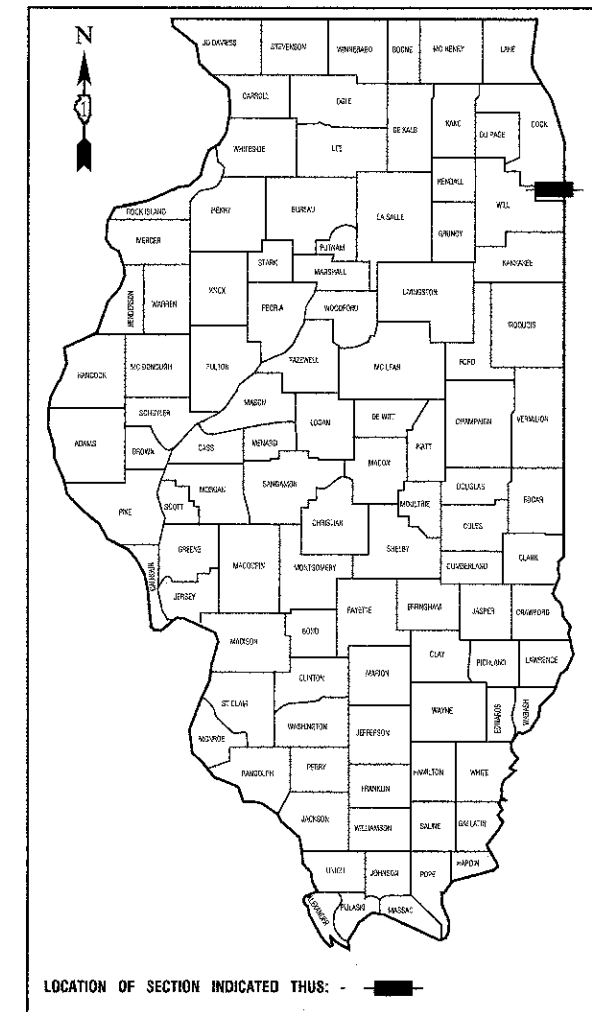
**INDEX OF SHEETS**

1. COVER SHEET, INDEX OF SHEETS & STATE STANDARDS
2. SUMMARY OF QUANTITIES & GENERAL NOTES
3. TYPICAL CROSS SECTIONS
4. PAVEMENT PLAN
5. PAVEMENT MARKINGS
- 6.-10. IDOT DISTRICT 1 DETAILS

**HIGHWAY STANDARDS**

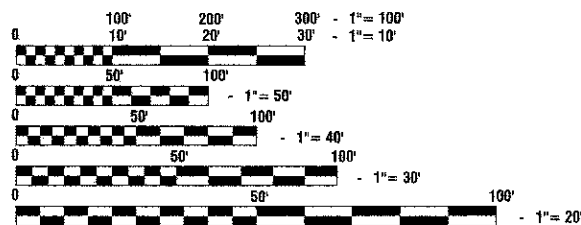
- |           |  |
|-----------|--|
| 000001-06 | STANDARD SYMBOLS, ABBREVIATIONS AND PATTERNS         |
| 424001-06 | PERPENDICULAR CURB RAMPS FOR SIDEWALKS               |
| 442201-03 | CLASS C AND D PATCHES                                |
| 606001-04 | CONCRETE CURB TYPE B AND COMBINATION CURB AND GUTTER |
| 701501-06 | URBAN LANE CLOSURE, 2L, 2W UNDIVIDED                 |
| 701801-05 | LANE CLOSURE, MULTILANE 1W OR 2W CROSSWALK           |
|           | SIDEWALK CLOSURE                                     |
| 701901-02 | TRAFFIC CONTROL DEVICES                              |

**FAU 1041 (223RD STREET)  
NICHOLS DRIVE TO MURPHY AVENUE  
ROAD RESURFACING  
SECTION NO.: 11-00030-00-RS  
PROJECT NO.: M-9003 (914)  
VILLAGE of SAUK VILLAGE  
COOK COUNTY  
JOB NO. C-91-175-12**



	<u>SOME ST. &amp; OTHER ST</u>
2006 ADT -	3,000
2030 ADT -	3,000
POSTED SPEED LIMIT -	25 mph
DESIGN PERIOD -	20 YEARS
DESIGN SPEED LIMIT -	30 mph
STREET CLASSIFICATION -	LOCAL COLLECTOR

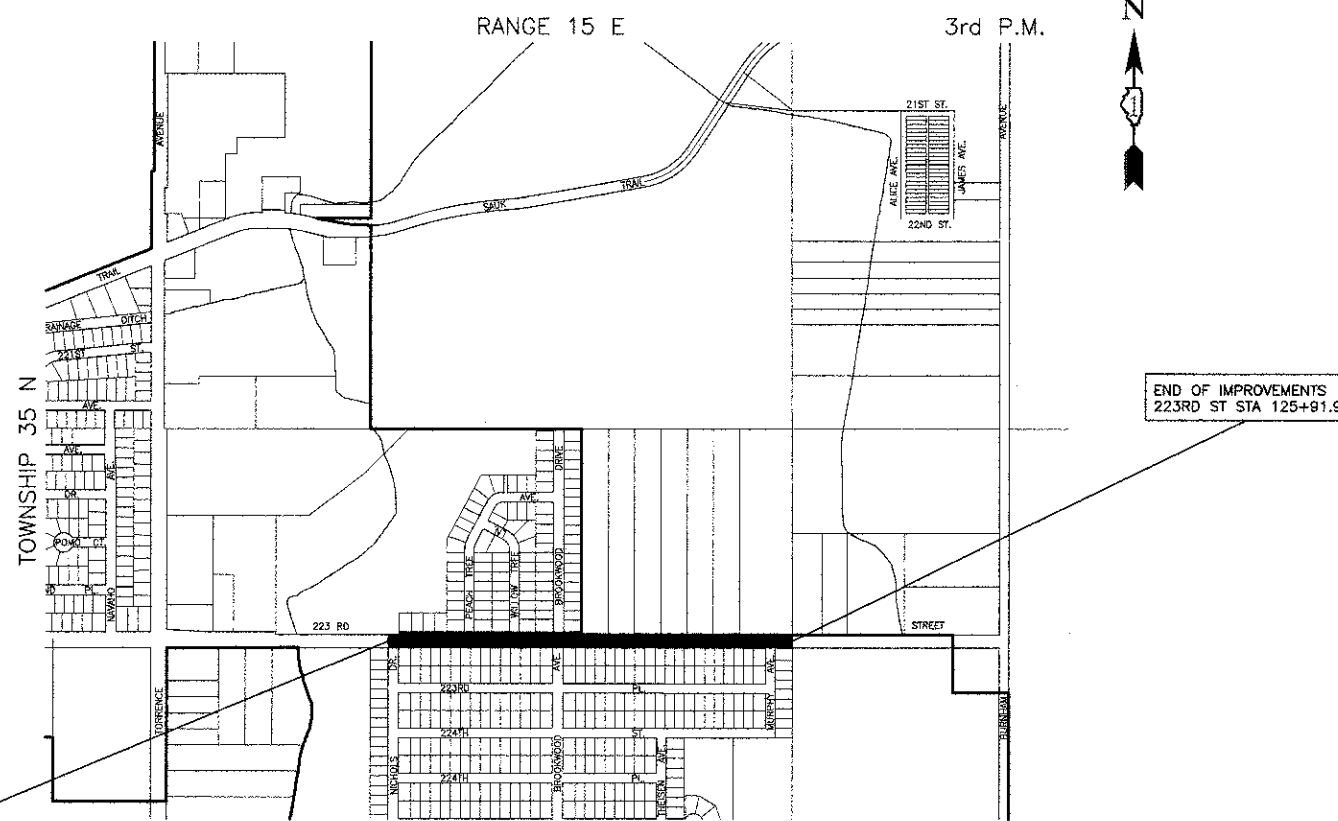
SCALES  
 PLAN - 1"=50'  
 PROFILE HORIZ. - 1"=50'  
 PROFILE VERT. - 1"=5'  
 CROSS SECTIONS - 1"=10'



FULL SIZE PLANS HAVE BEEN PREPARED USING STANDARD ENGINEERING SCALES, REDUCED SIZED PLANS WILL NOT CONFORM TO STANDARD SCALES, IN MAKING MEASUREMENTS ON REDUCED PLANS, THE ABOVE SCALES MAY BE USED.

J. U. L. I. E.  
JOINT UTILITY LOCATION INFORMATION FOR EXCAVATION  
1-800-892-0123 or 811

BEGINNING OF IMPROVEMENTS  
223RD ST STA 100+67.08



**LOCATION MAP**  
GROSS LENGTH=2520 FEET=0.48 MILES  
NET LENGTH=2520 FEET=0.48 MILES

STATE OF ILLINOIS DEPARTMENT OF TRANSPORTATION  
DIVISION OF HIGHWAYS

Approved: [Signature] 8-14-12  
President, Village of Sauk Village

Passed: [Signature] August 23, 2012  
District 1 Engineer of Local Roads & Streets

Released for Bid Based on Limited Review: [Signature] August 23 2012  
Deputy Director of Highways, Region 1 Engineer

PRINTED BY THE AUTHORITY OF  
THE STATE OF ILLINOIS

PREPARED BY OR UNDER THE DIRECT SUPERVISION OF:  
[Signature] 8-10-12  
LICENSED PROFESSIONAL ENGINEER  
STATE OF ILLINOIS  
LICENSE NO. 11/30/13

PROGRAM AND OFFICE ENGINEER: CHARLES F. RIDDLE, P.E. (847) 705-4406, SCHAMBURG, IL  
CONSULTANTS: ROBINSON ENGINEERING, LTD. 708-331-6700

CONTRACT NO. 63739