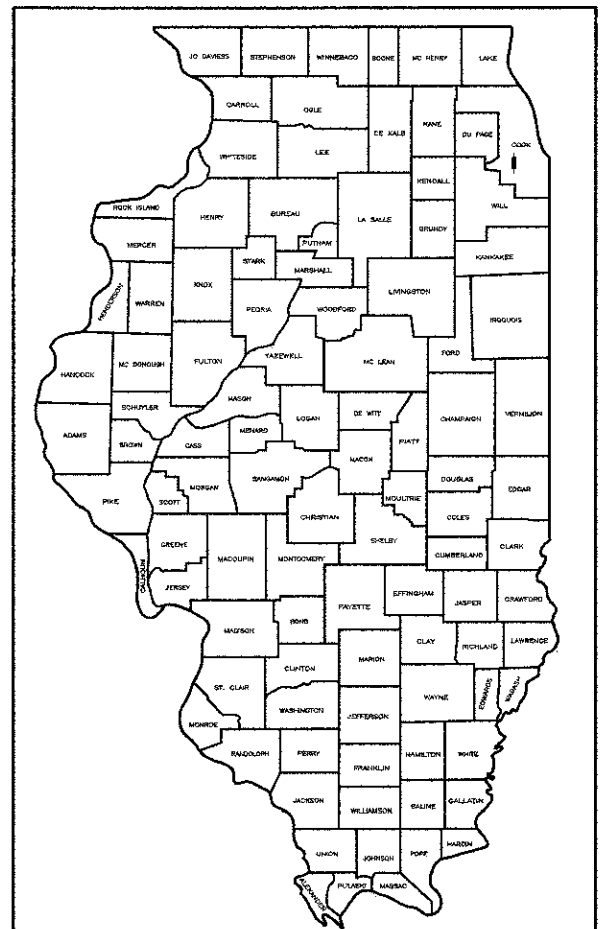


FAU RTE.	SECTION	COUNTY	TOTAL SHEETS	SHEET NO.
3791	08-00043-00-FP	COOK	27	?
F.H.W.A. REG.	ILLINOIS	PROJECT:		
CONTRACT NO. 63747				

STATE OF ILLINOIS DEPARTMENT OF TRANSPORTATION DIVISION OF HIGHWAYS PLANS FOR PROPOSED FEDERAL AID HIGHWAY

- INDEX OF SHEETS**
- 1.) COVER SHEET, INDEX TO SHEETS, LOCATION MAP, INDEX OF STANDARDS
 - 2.) NOTES, STANDARD SYMBOLS
 - 3.) SUMMARY OF QUANTITIES
 - 4.) PAVEMENT DESIGN CALCULATIONS, TYPICAL SECTIONS
 - 5.) SCHEDULE OF QUANTITIES
 - 6.) ALIGNMENT, TIES AND BENCHMARKS
 - 7.) EXISTING CONDITIONS AND DEMOLITION PLAN
 - 8.-10.) PLAN & PROFILE
 - 11.) TRAFFIC CONTROL PLAN
 - 12.) GRADING AND EROSION CONTROL PLAN
 - 13.-18.) CONSTRUCTION DETAILS
 - 19.-27.) CROSS SECTIONS

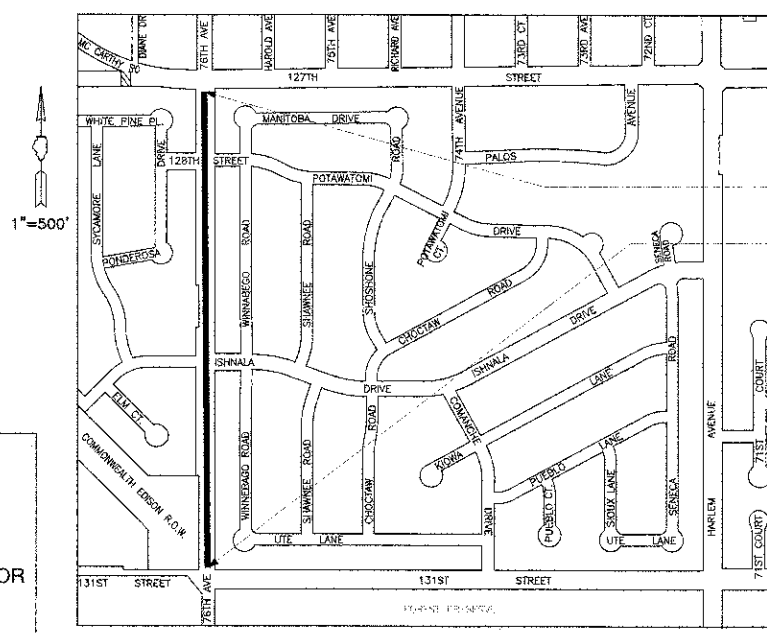


LOCATION OF SECTION INDICATED THUS:

F.A.U. RTE. 3791 (76TH AVENUE)
131ST ST. TO 127TH ST.
FEDERAL PROJECT M-9003(747)
CITY SECTION NO. 08-00043-00-FP
RECONSTRUCTION (ROADWAY)
CITY OF PALOS HEIGHTS
COOK COUNTY
JOB NO. C-91-192-11

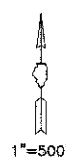
DESIGN DESIGNATION
76TH AVENUE
(20) COLLECTOR 0.82 (BIT. 20)
COOK COUNTY
SECTION 08-00043-00-FP
ADT = 2000, DHV = 200
DESIGN SPEED = 30 MPH
POSTED SPEED = 20 MPH

- LIST OF ILLINOIS DOT HIGHWAY STANDARDS**
- 000001-06 STANDARD SYMBOLS, ABBREVIATIONS, AND PATTERNS
 - 280001-06 TEMPORARY EROSION CONTROL SYSTEMS
 - 424001-06 PERPENDICULAR CURB RAMPS
 - 542301-03 PRECAST REINFORCED CONCRETE FLARED END SECTION
 - 542311-03 GRATING FOR CONCRETE FLARED END SECTION (FOR 600 mm (24") THRU 1350 mm (54") PIPE)
 - 602001-02 CATCH BASIN TYPE A
 - 602301-03 INLET - TYPE A
 - 602306-03 INLET - TYPE B
 - 602401-03 MANHOLE TYPE A
 - 604036-02 GRATE TYPE 8
 - 701301-04 LANE CLOSURE 2L, 2W SHORT TIME OPERATIONS
 - 701501-06 URBAN LANE CLOSURE 2L, 2W UNDIVIDED
 - 701901-02 TRAFFIC CONTROL & PROTECTION
 - 720001-01 SIGN PANEL MOUNTING DETAILS
 - 720006-03 SIGN PANEL ERECTION DETAILS
 - 728001-01 TELESCOPING STEEL SIGN SUPPORT



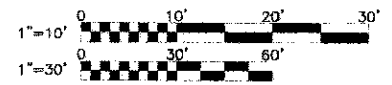
PROJECT ENDS
STA. 52+61

PROJECT BEGINS
STA. 27+71



J.U.L.I.E.
JOINT UTILITY LOCATION INFORMATION FOR EXCAVATION
CALL 811

**Know what's below.
Call before you dig.**



FULL SIZE PLANS HAVE BEEN PREPARED USING STANDARD ENGINEERING SCALES. REDUCED SIZED PLANS WILL NOT CONFORM TO STANDARD SCALES. IN MAKING MEASUREMENTS ON REDUCED PLANS, THE ABOVE SCALES MAY BE USED.

SCALES

PLAN	1 INCH = 30 FEET
PROFILE HORIZ.	1 INCH = 30 FEET
PROFILE VERT.	1 INCH = 5 FEET
CROSS-SECTIONS HORIZ.	1 INCH = 10 FEET
CROSS-SECTIONS VERT.	1 INCH = 5 FEET

LOCATION MAP

TOWNSHIP 37N, R12E 3RD PM

— — DENOTES PROJECT LOCATION

NET LENGTH OF PROJECT = 2,490 LIN FT (0.47 MILE)
GROSS LENGTH OF PROJECT = 2,490 LIN FT (0.47 MILE)

STATE OF ILLINOIS }
COUNTY OF DU PAGE } ss

I, THE UNDERSIGNED, AN ILLINOIS PROFESSIONAL LAND SURVEYOR, DO HEREBY CERTIFY THAT THIS PROFESSIONAL SERVICE CONFORMS TO THE CURRENT ILLINOIS MINIMUM STANDARDS FOR A "BOUNDARY SURVEY", AND THAT THE PLAT HEREON DRAWN IS A CORRECT REPRESENTATION OF SAID SURVEY.

DATED, THIS 5th DAY OF SEPTEMBER, 2012 A.D., AT LISLE, ILLINOIS.

ROBERT J. SILANDER
ILLINOIS PROFESSIONAL LAND SURVEYOR No. 035-2181
MY LICENSE EXPIRES NOVEMBER 30, 2012
ILLINOIS PROFESSIONAL DESIGN FIRM
PROFESSIONAL ENGINEERING CORPORATION NO. 184-001245

FIELD WORK COMPLETED ON September 14, 2012

STATE OF ILLINOIS
DEPARTMENT OF TRANSPORTATION
DIVISION OF HIGHWAYS

APPROVED Sept 5 2012

DIRECTOR OF PUBLIC WORKS, PALOS HEIGHTS

PASSED Sept 7 2012

DISTRICT #7 ENGINEER OF LOCAL ROADS AND STREETS

RELEASING FOR BID
BASED ON LIMITED
REVIEW September 7 2012

DEPUTY DIRECTOR OF HIGHWAYS, REGION #1 ENGINEER

ENGINEER'S CERTIFICATION

STATE OF ILLINOIS) ss
COUNTY OF DuPAGE)

I, SIGITAS P. VAZNELIS, A REGISTERED PROFESSIONAL ENGINEER OF ILLINOIS, HEREBY CERTIFY THAT THESE PLANS WERE PREPARED BY MORRIS ENGINEERING, INC. 5100 S. LINCOLN AVENUE, SUITE 100, LISLE, ILLINOIS, 60532 UNLESS OTHERWISE NOTED. DIRECTION: THIS TECHNICAL SUBMISSION IS INTENDED TO BE USED AS AN INTEGRAL PART OF THE PROJECT SPECIFICATIONS.

DATED THIS 5th DAY OF September, A.D. 2012

ILLINOIS REGISTERED PROFESSIONAL ENGINEER NO. 062-044114
MY REGISTRATION EXPIRES ON NOVEMBER 30, 2013

UNLESS THIS DOCUMENT BEARS THE ORIGINAL SIGNATURE AND SEAL OF THE DESIGN PROFESSIONAL ENGINEER, THIS IS NOT A VALID TECHNICAL SUBMISSION.



PROGRAM AND OFFICE ENGINEER: CHARLES F. RIDDLER, P.E. 847-705-4406 SCHAUMBURG, IL
CONSULTANT: MORRIS ENGINEERING, INC. (630) 271-0770

MORRIS ENGINEERING, INC. 5100 S. LINCOLN AVENUE, SUITE 100, LISLE, ILLINOIS 60532