

HORIZONTAL AND VERTICAL CONTROL

HORIZONTAL CONTROL POINTS							
POINT	NORTH	EAST	ELEVATION	CHAIN	STATION	OFFSET	DESCRIPTION
1	1824058.6040	2254625.2070	592.2817	EX84	938+35.5053	20.4469' RT	GPS CONTROL POINT
2	1824616.9500	2255139.8880	583.4720	EX84	945+94.6135	21.5813' LT	GPS CONTROL POINT
3	1824967.0540	2255613.6970	594.0145	EX84	951+80.4555	40.5230' RT	GPS CONTROL POINT

SURVEY WORK POINTS							
POINT	NORTH	EAST	ELEVATION	CHAIN	STATION	OFFSET	DESCRIPTION
104	1825220.1180	2254818.1240	586.5030	EX84	947+65.0224	683.6270' LT	NAIL
105	1825270.0840	2254624.0530	585.4590	EX84	946+55.7313	851.6020' LT	NAIL
106	1825454.8700	2254920.0030	585.0030	EX84	949+98.7543	787.8251' LT	NAIL
107	1824945.0170	2254987.4640	577.0550	EX84	947+03.9485	366.4100' LT	NAIL
130	1824.4400	2254.9990	581.9780	EX84	OUT OF CHAIN	-----	RAIL ROAD SPIKE
132	1824620.8760	2255231.6690	585.9680	EX84	946+64.9211	37.5458' RT	RAIL ROAD SPIKE

BENCH MARKS							
POINT	NORTH	EAST	ELEVATION	CHAIN	STATION	OFFSET	DESCRIPTION
401	1825077.7320	2255736.8050	597.8303	EX84	953+45.9929	42.1291' RT	R.O.W. MARKER
405	1823987.2130	2254585.7660	594.3503	EX84	937+55.6730	39.0254' RT	RAIL ROAD SPIKE

REFERENCE TIES				
POINT	CHAIN	STATION	OFFSET	DESCRIPTION
500	EX84	951+19.7187	54.1462' RT	POWER POLE
501	EX84	951+08.3778	39.4893' LT	POWER POLE
502	EX84	952+06.0956	44.2689' LT	GUARDPOST
503	EX84	946+78.5192	39.5234' LT	POWER POLE
504	EX84	945+68.9153	46.2561' LT	TREE DECIDUOUS
505	EX84	946+64.1432	37.9519' RT	POWER POLE
506	EX84	939+19.4727	32.3361' LT	TREE DECIDUOUS
507	EX84	937+57.1978	39.0777' LT	GUY POLE
508	EX84	937+55.9540	39.8200' RT	POWER POLE

CURVE POINT NUMBERS					
CHAIN	CURVE	PI	CC	PC	PT
EX84	200	200	201	202	203

Beginning chain EX84 description

Point 30 N 1,822,621.0560 E 2,253,622.9550 Sta 920+75.11
 Course from 30 to PC 200 N 29 33/64 14' 44.07" E Dist 436.4888

Curve Data

Curve 200

P.I. Station 934+31.48 N 1,823,804.5335 E 2,254,285.6142

Delta = 18 33/64 14' 31.12" (RT)

Degree = 1 33/64 00' 00.01"

Tangent = 919.8800

Length = 1,824.1927

Radius = 5,729.5620

External = 73.3735

Long Chord = 1,816.4977

Mid. Ord. = 72.4457

P.C. Station 925+11.60 N 1,823,001.9072 E 2,253,836.2033

P.T. Station 943+35.79 N 1,824,426.1427 E 2,254,963.6859

C.C. N 1,820,202.7073 E 2,258,835.4393

Back = N 29 33/64 14' 44.08" E

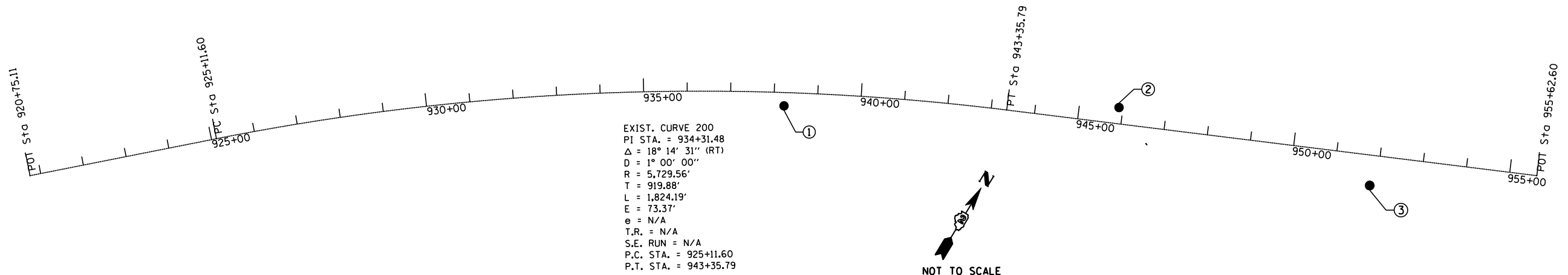
Ahead = N 47 33/64 29' 15.20" E

Chord Bear = N 38 33/64 21' 59.64" E

Course from PT 200 to 29 N 47 33/64 29' 15.19" E Dist 1,226.8059

Point 29 N 1,825,255.1573 E 2,255,868.0021 Sta 955+62.60

Ending chain EX84 description



EXIST. CURVE 200
 PI STA. = 934+31.48
 Δ = 18° 14' 31" (RT)
 D = 1° 00' 00"
 R = 5,729.56'
 T = 919.88'
 L = 1,824.19'
 E = 73.37'
 e = N/A
 T.R. = N/A
 S.E. RUN = N/A
 P.C. STA. = 925+11.60
 P.T. STA. = 943+35.79

FILE NAME = s:\p1\6380--6395\6346\026\micro\cadd sheets\0264925-sh-hvcontrol1.dgn