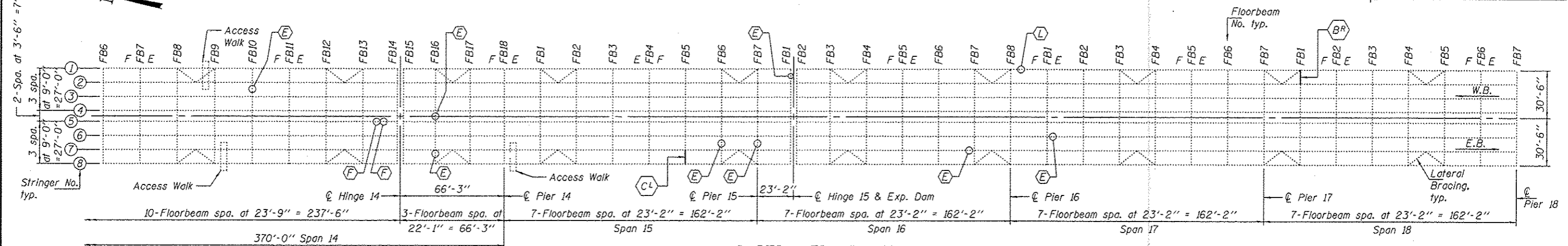
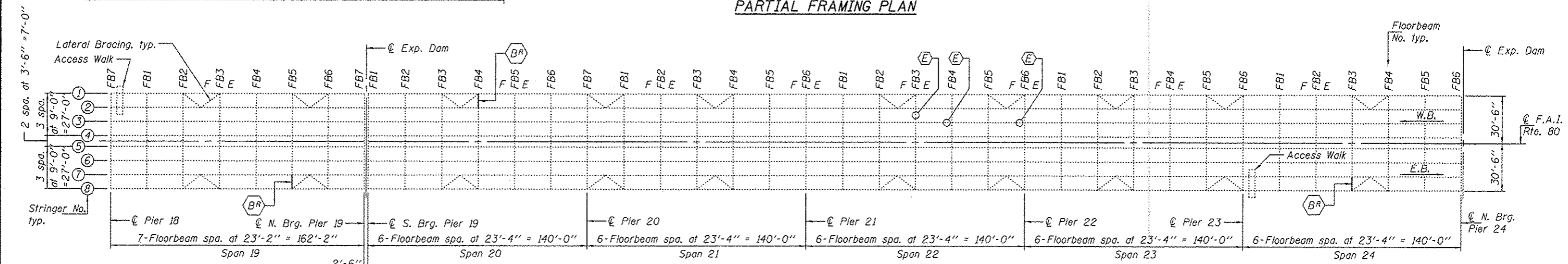


PARTIAL FRAMING PLAN



PARTIAL FRAMING PLAN



PARTIAL FRAMING PLAN

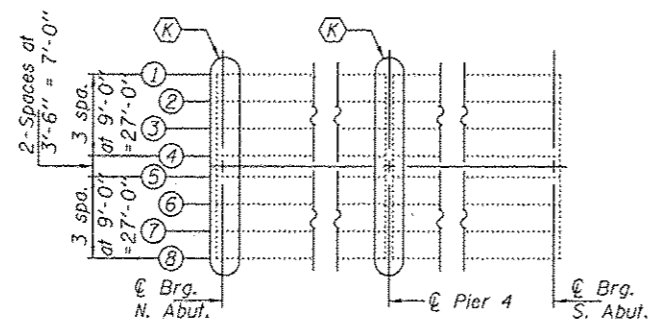
Note:
Girders, lateral bracing between girders and inspection walkway not shown for clarity.

See sheet 2 of 6 for General Notes

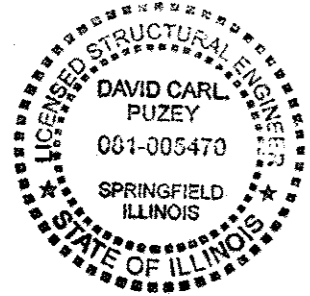
TOTAL BILL OF MATERIAL

ITEM	UNIT	QUANTITY
Structural Steel Repair	Pound	800
Neoprene Expansion Joint, 2"	Foot	66
Neoprene Expansion Joint, 4"	Foot	66
Substructure Repairs (Grout Bags)	L.S.	1

- (BL) (BR) (CL) - Knee Brace Replacement (See sheet 2 of 6)
- (E) - Loose or Missing Bolts (See sheet 3 of 6)
- (F) - Repair Conduit Hanger (See sheet 3 of 6)
- (G) - Structural Steel Repair (See sheet 4 of 6)
- (H) - Structural Steel Repair (See sheet 4 of 6)
- (I) - Structural Steel Repair (See sheet 4 of 6)
- (J) - Structural Steel Repair (See sheet 4 of 6)
- (K) - Replace Neoprene Expansion Joint (See sheet 5 of 6)
- (L) - Scour Countermeasures (See sheet 6 of 6)



PARTIAL PLAN AT ABUTS. & PIER 4



Expires: November 30, 2012

DESIGNED - Adrian J. Holloway	EXAMINED - <i>Timothy A. Adams</i>	DATE - SEPTEMBER 19, 2012
CHECKED - <i>[Signature]</i>	PASSED - <i>[Signature]</i>	
DRAWN - Kyle M. Stoffen		
CHECKED - <i>ATH</i>		

STATE OF ILLINOIS
DEPARTMENT OF TRANSPORTATION

GENERAL PLAN & ELEVATION
I-80 OVER THE MISSISSIPPI RIVER
SN 081-0011

F.A. RTE.	SECTION	COUNTY	TOTAL SHEETS	SHEET NO.
80	(81-18M-3)	ROCK ISLAND	9	4
CONTRACT NO. 64E33				
[ILLINOIS] FED. AID PROJECT				