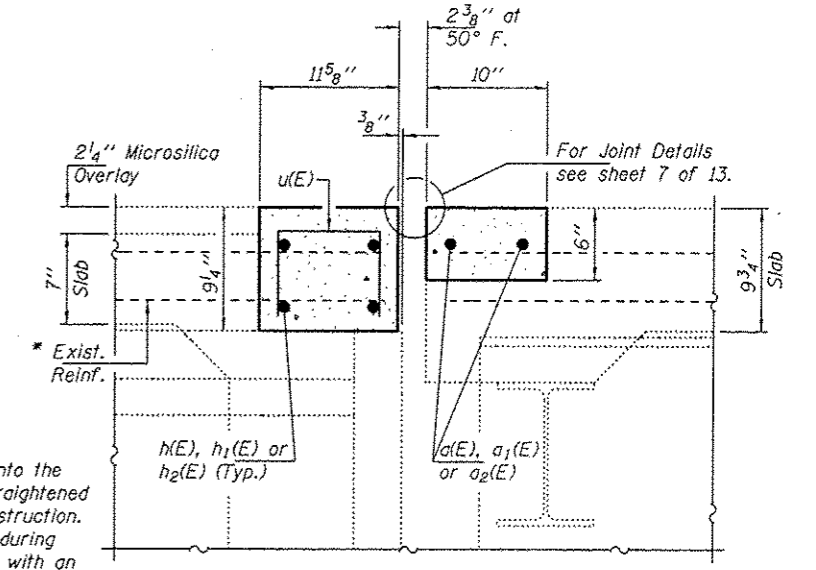


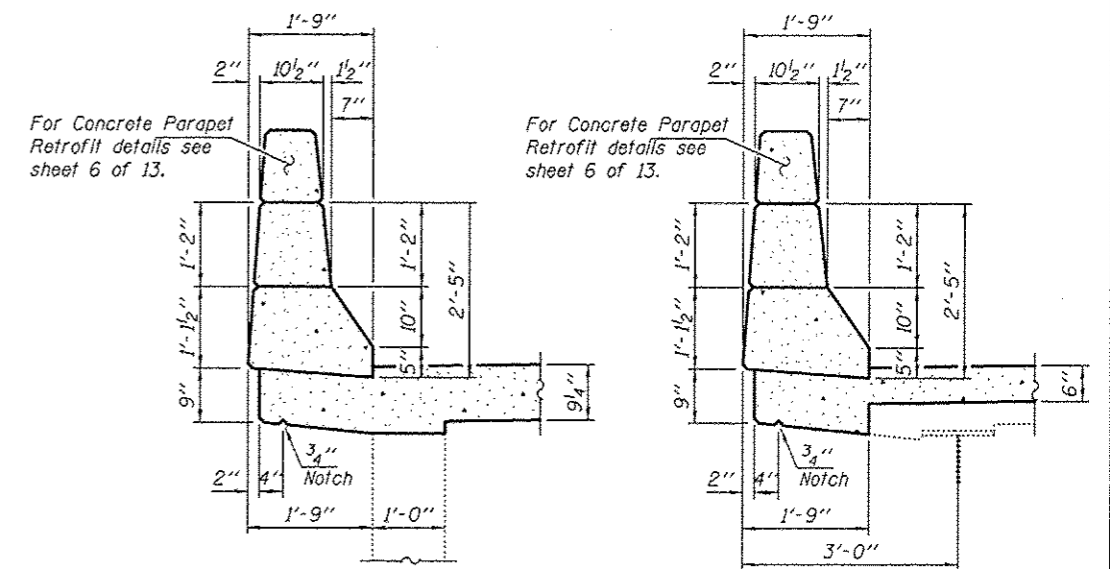
CONCRETE PLAN AT SOUTH ABUTMENT

CONCRETE PLAN AT NORTH ABUTMENT



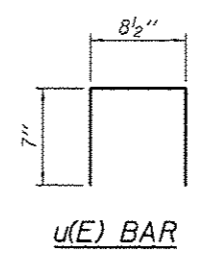
SECTION B-B  
Dimensions at Rt. L's

\* Existing reinforcement extending into the removal area shall be cleaned, straightened and incorporated into the new construction. Any reinf. bars that are damaged during concrete removal shall be replaced with an approved bar splicer or anchorage system. Cast shall be included with Concrete Removal.



SECTION THRU APPROACH PARAPETS

SECTION THRU BRIDGE PARAPETS



U(E) BAR

BILL OF MATERIAL

Bar	No.	Size	Length	Shape
a(E)	4	#5	20'-0"	—
a1(E)	2	#5	34'-5"	—
a2(E)	2	#5	36'-8"	—
h(E)	8	#5	20'-0"	—
h1(E)	4	#5	34'-5"	—
h2(E)	4	#5	36'-8"	—
u(E)	102	#5	1'-10 1/2"	□
Concrete Removal			Cu. Yd.	5.6
Concrete Superstructure			Cu. Yd.	5.6
Bar Splicers			Each	12
Reinforcement Bars, Epoxy Coated			Pounds	895

DESIGNED - GGE  
CHECKED - ADY  
DRAWN - Kyle M. Steffen  
CHECKED - GGE ADY

EXAMINED  
PASSED  
ACTING ENGINEER OF BRIDGES AND STRUCTURES

DATE - SEPTEMBER 19, 2012

STATE OF ILLINOIS  
DEPARTMENT OF TRANSPORTATION

CONCRETE REPLACEMENT DETAILS  
SN 071-0062 (S.B.)

SHEET NO. 3 OF 13 SHEETS

F.A.I. SECTION COUNTY TOTAL SHEETS SHEET NO.  
39 02 DECK REPAIR 2013-1 OGLE 32 17  
CONTRACT NO. 64H73  
ILLINOIS FED. AID PROJECT