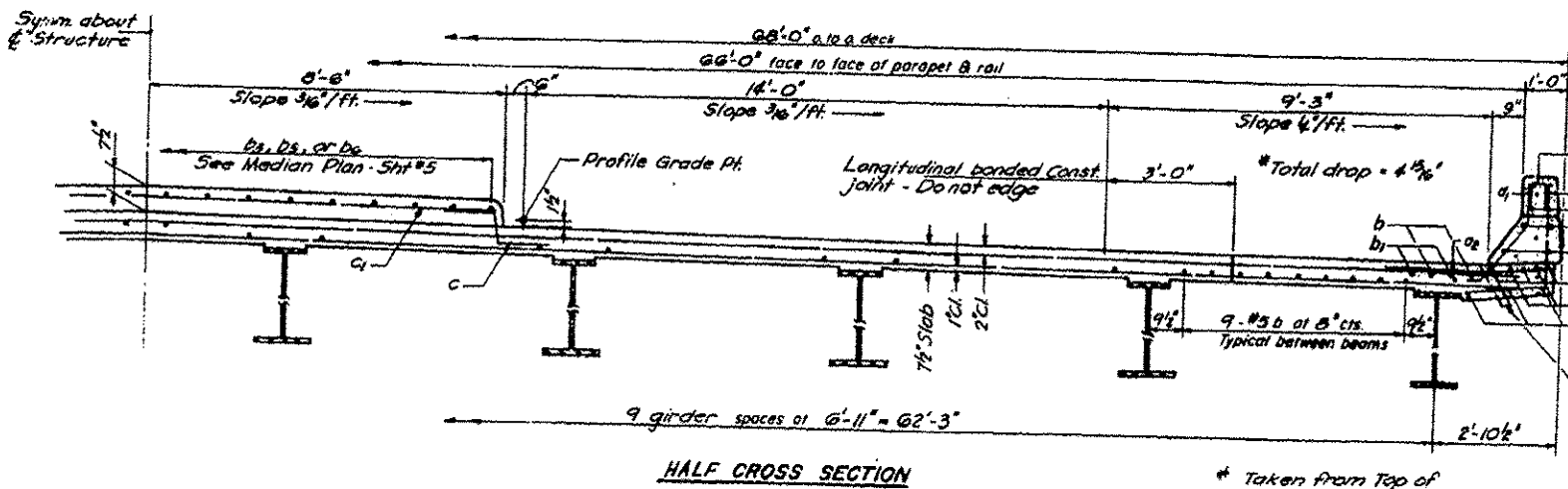
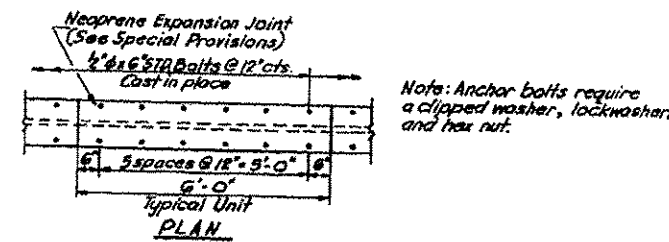
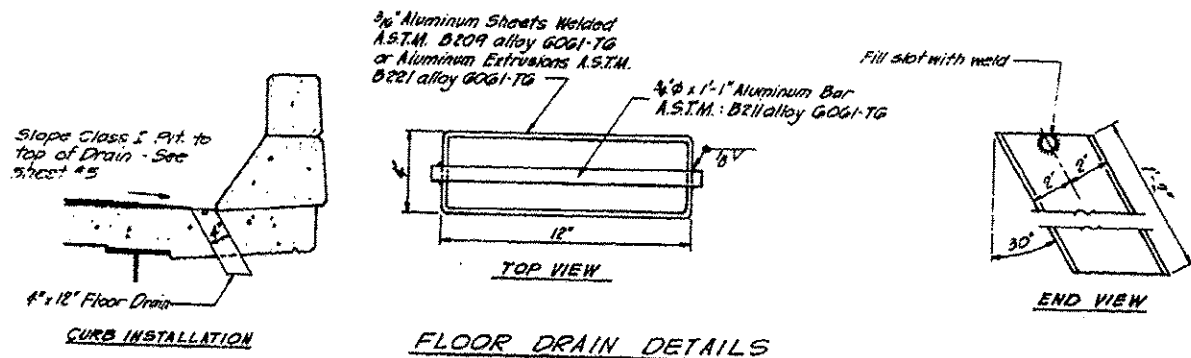
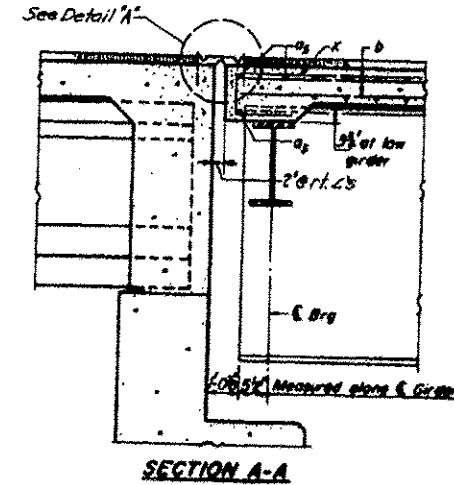
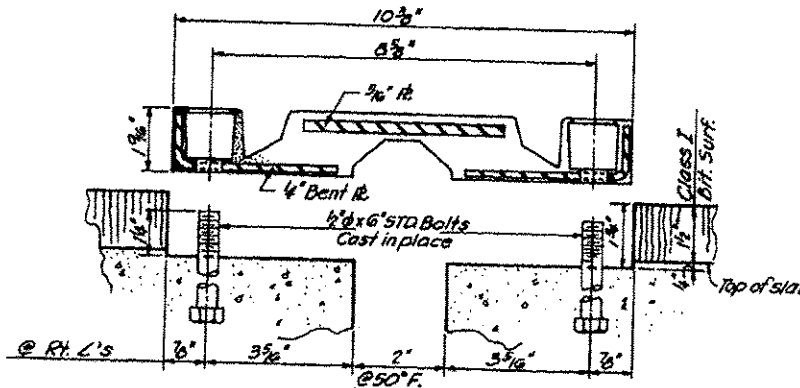
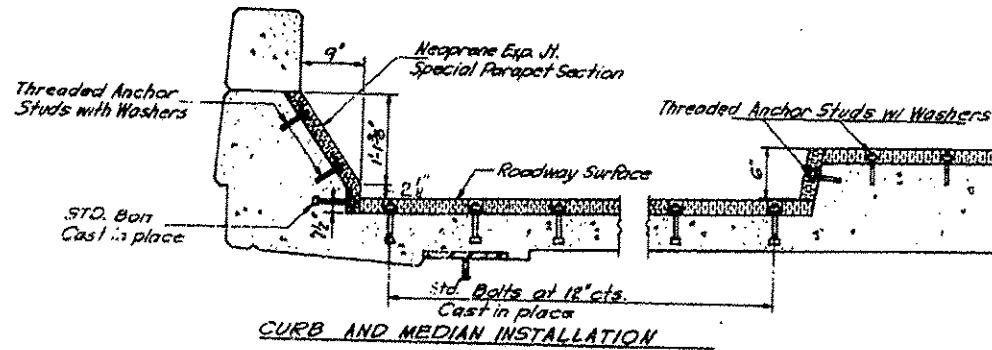


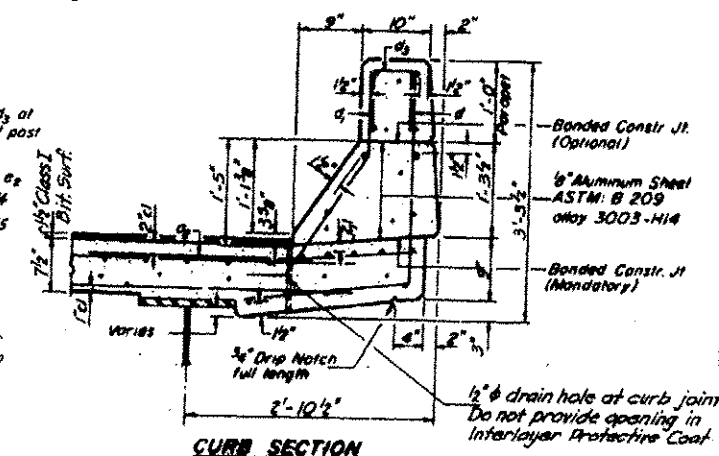
# FOR INFORMATION ONLY

STATE OF ILLINOIS  
DEPARTMENT OF PUBLIC WORKS & BUILDINGS  
DIVISION OF HIGHWAYS

PROJECT NO.	195	SECTION	WHITESIDE	STATION	2619 + 89.27
DATE	3/10/69	SCALE	AS SHOWN		



NOTE: For placement of bars d<sub>1</sub> and d<sub>2</sub> thru e<sub>1</sub> see sheet #10

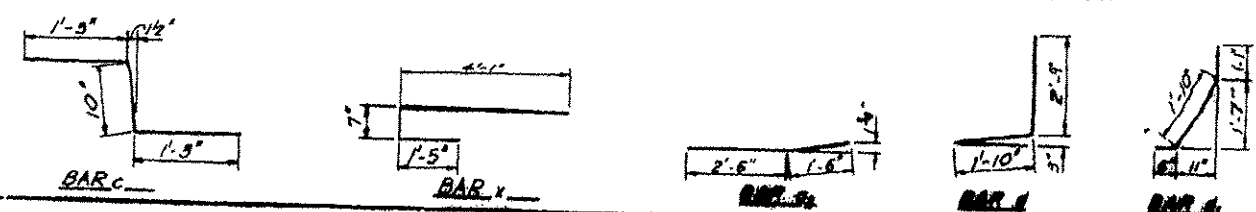


**BILL OF MATERIAL**

Qty	Size	Length	Shape
a	410	85	38.4"
a	420	85	27.8"
a	524	45	4.0"
a <sub>1</sub>	180	85	36.5"
a <sub>2</sub>	118	85	32.5"
a <sub>3</sub>	10	85	50.0"
b	1422	85	27.10"
b	68	85	44.9"
b <sub>1</sub>	24	85	35.5"
b <sub>2</sub>	134	85	26.6"
b <sub>3</sub>	8	85	17.6"
b <sub>4</sub>	22	85	17.9"
b <sub>5</sub>	17	85	32.4"
c	100	85	3.7"
c <sub>1</sub>	226	85	16.6"
c <sub>2</sub>	14	85	17.5"
d	402	84	2.7"
d <sub>1</sub>	402	85	3.6"
x	210	86	6.1"
Reinforcement Bars			LB2 142216
Class X Concrete			Cu 192 502.0

DESIGNED	L. Roberts	EXAMINED	IP
CHECKED	S. W. Knight	PLANNED	
DRAWN	L. Roberts	APPROVED	
CHECKED	S. W. Knight		

S-506-L(30) 4-22-68, 12-3-69



**SUPERSTRUCTURE DETAILS**  
R.A. RTE. 403 - SEC. 195-3ND-G  
WHITESIDE COUNTY  
STA. 2619 + 89.27