

STATE OF ILLINOIS
DEPARTMENT OF TRANSPORTATION
DIVISION OF HIGHWAYS

**PROPOSED
HIGHWAY PLANS**

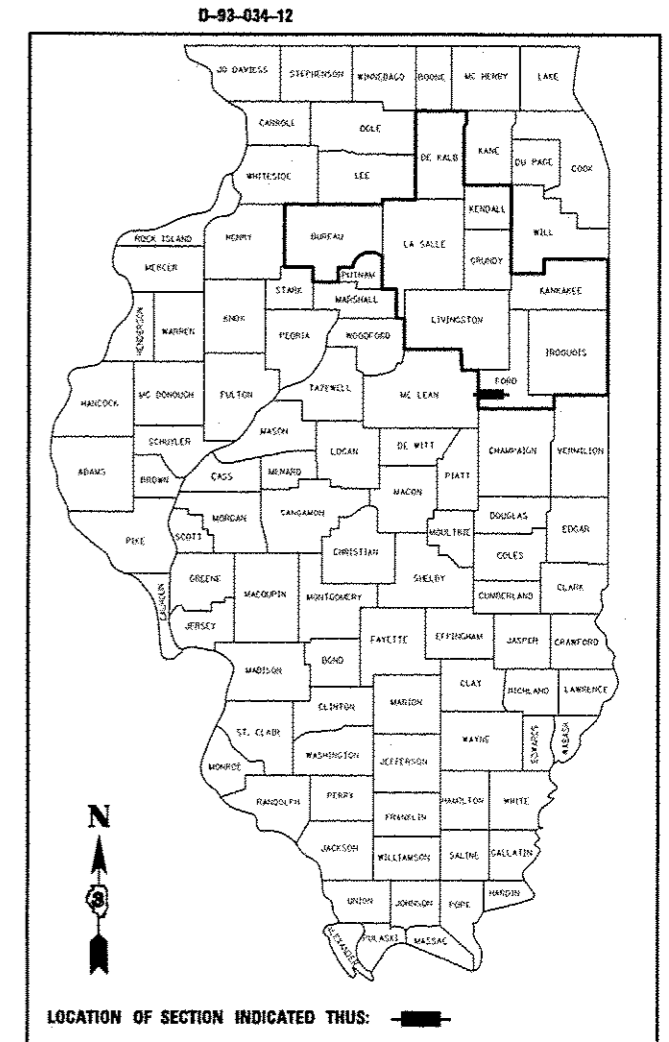
FAP ROUTE 693 (IL 9)
SECTION 19BR
PROJECT: ACBRF-0693(066)
STRUCTURE REPLACEMENT
FORD COUNTY

C-93-062-12

F.A.P. RTE. 693	SECTION 19BR	COUNTY FORD	TOTAL SHEETS 61	SHEET NO. 1
ILLINOIS CONTRACT NO. 66A12				

INDEX OF SHEETS

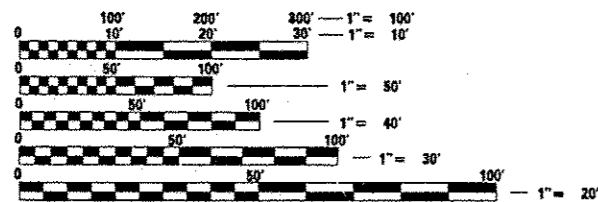
- 1 COVER SHEET
- 2 HIGHWAY STANDARDS, GENERAL NOTES AND COMMITMENTS
- 3-8 SUMMARY OF QUANTITIES
- 9-10 TYPICAL SECTIONS
- 11-12 SCHEDULE OF QUANTITIES
- 13 ALIGNMENT, SURVEY TIES AND BENCHMARKS
- 14-16 PLAN & PROFILE SHEETS
- 17-18 STAGE I CONSTRUCTION
- 19-20 STAGE II CONSTRUCTION
- 21 EROSION CONTROL PLAN
- 22 R.O.W. PLAN SHEET
- 23-52 BRIDGE PLANS S.N. 027-0101 (PR.) / 027-0005 (EX.)
- 53-55 DETAILS
- 56-61 CROSS SECTIONS



FUNCTIONAL CLASSIFICATION
MINOR ARTERIAL (NON URBAN)
(CLASS II TRUCK ROUTE)
2013 ADT = 2550
P.V. = 86% S.U. = 9% M.U. = 5%

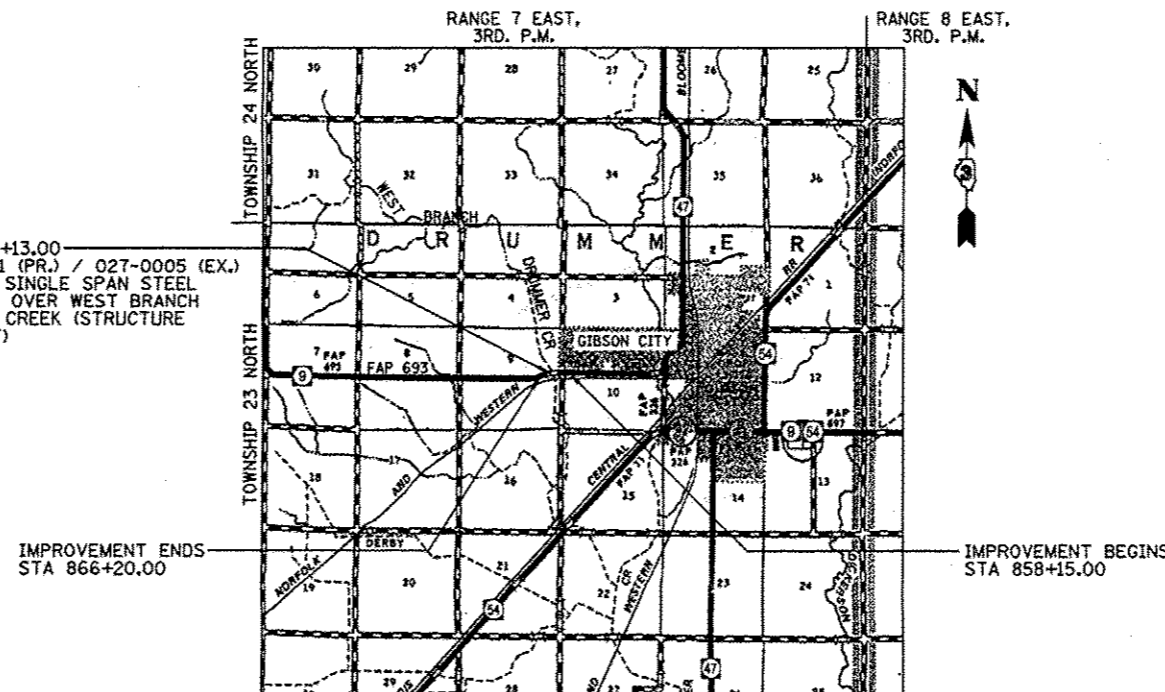
FOR LIST OF STANDARDS, SEE SHEET NO. 2

STATION 862+13.00
S.N. 027-0101 (PR.) / 027-0005 (EX.)
74'-6" LONG SINGLE SPAN STEEL
BEAM BRIDGE OVER WEST BRANCH
OF DRUMMER CREEK (STRUCTURE
REPLACEMENT)

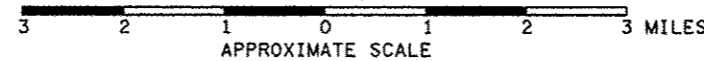


FULL SIZE PLANS HAVE BEEN PREPARED USING STANDARD
ENGINEERING SCALES. REDUCED SIZED PLANS WILL NOT
CONFORM TO STANDARD SCALES. IN MAKING MEASUREMENTS
ON REDUCED PLANS, THE ABOVE SCALES MAY BE USED.

J.U.L.I.E.
JOINT UTILITY LOCATION INFORMATION FOR EXCAVATION
1-800-892-0123
OR 811



LOCATION MAP



GROSS LENGTH = 805.0 FT. = 0.15 MILE
NET LENGTH = 805.0 FT. = 0.15 MILE

DISTRICT 3 NO. (815) 434-6131
PROJECT ENGINEER: JOE KANNEL, PE
UNIT CHIEF: PATRICK BRABOY
CONTRACT NO. 66A12

Farnsworth
GROUP, INC.
2709 McGraw Drive
Bloomington, Illinois 61704
309/663-8435, 309/663-1571 fax



Mark S. Wylie Date 9/13/12
MARK S. WYLIE
REGISTERED PROFESSIONAL ENGINEER
NO. 043716
EXPIRATION 11/30/13

STATE OF ILLINOIS
DEPARTMENT OF TRANSPORTATION
DIVISION OF HIGHWAYS

SUBMITTED 8-14 20 12
Eric S. Thakaldar
DEPUTY DIRECTOR OF HIGHWAYS, REGION ENGINEER

October 5 20 12
John D. Baranzelli, PE
ENGINEER OF DESIGN AND ENVIRONMENT

October 5 20 12
William R. Freyler
DIRECTOR OF HIGHWAYS, CHIEF ENGINEER

**PRINTED BY THE AUTHORITY
OF THE STATE OF ILLINOIS**