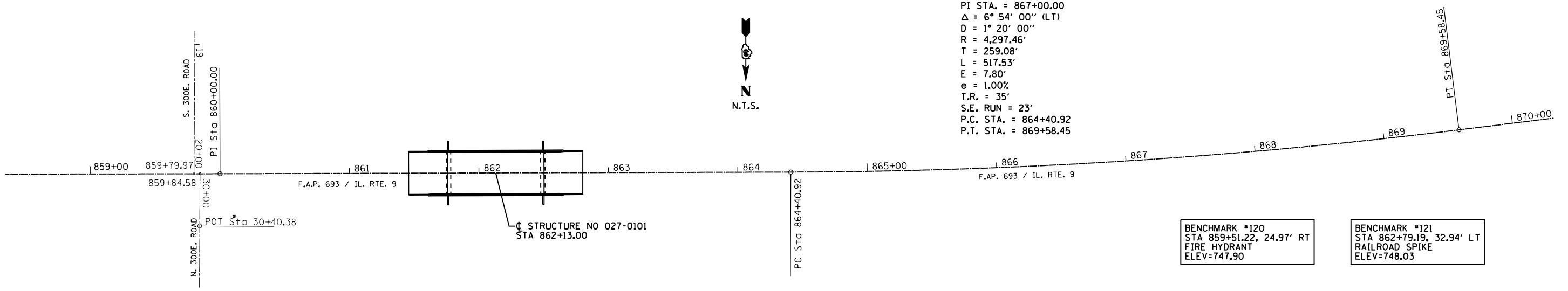
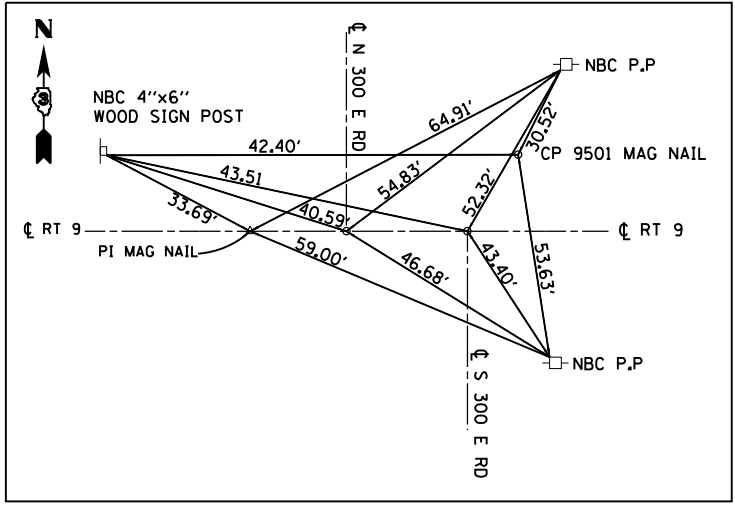


EXIST. CURVE RT9WEST-1
 PI STA. = 867+00.00
 $\Delta = 6^{\circ} 54' 00''$ (LT)
 $D = 1^{\circ} 20' 00''$
 $R = 4,297.46'$
 $T = 259.08'$
 $L = 517.53'$
 $E = 7.80'$
 $e = 1.00\%$
 $T.R. = 35'$
 $S.E. RUN = 23'$
 $P.C. STA. = 864+40.92$
 $P.T. STA. = 869+58.45$



BENCHMARK #120
 STA 859+51.22, 24.97' RT
 FIRE HYDRANT
 ELEV=747.90

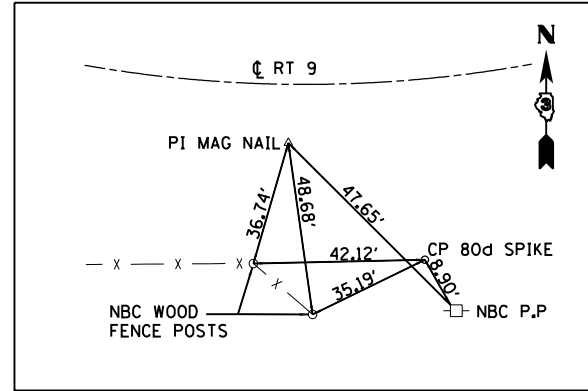
BENCHMARK #121
 STA 862+79.19, 32.94' LT
 RAILROAD SPIKE
 ELEV=748.03



CONTROL POINT #9501
 STA. 859+68.81, 18.75' RT
 N= 1383144.455
 E= 964674.726
 ELEV= 749.30

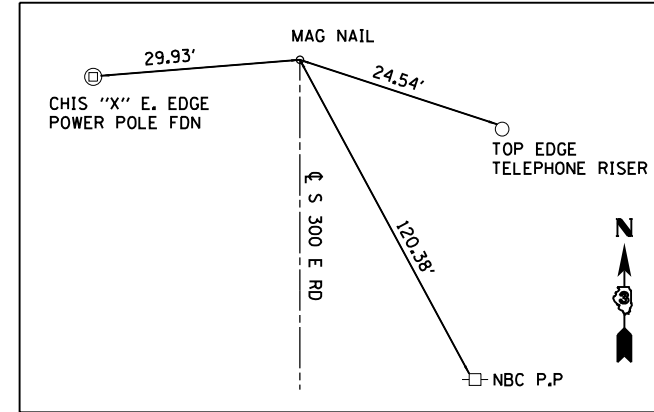
POT STA. 859+79.97 IL RT 9 = 20+00.00 S 300E RD.
 N=1383125.682
 E=964663.599

POT STA. 859+84.58 IL RT 9 = 30+00.00 N 300E RD.
 N=1383125.673
 E=964658.992

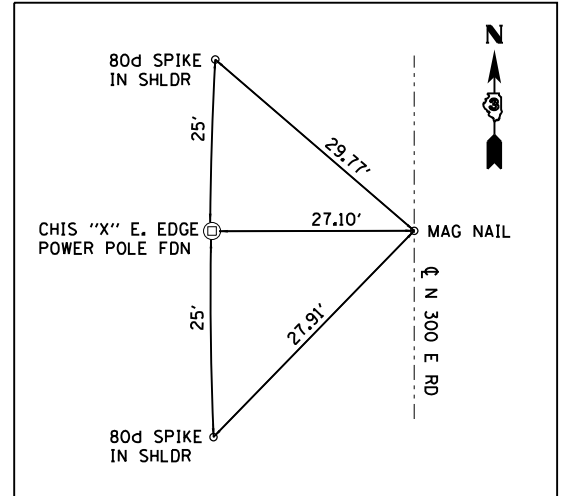


CONTROL POINT #9500
 STA. 873+41.78, 36.56' LT
 N=1383014.526
 E=963307.828
 ELEV=754.19

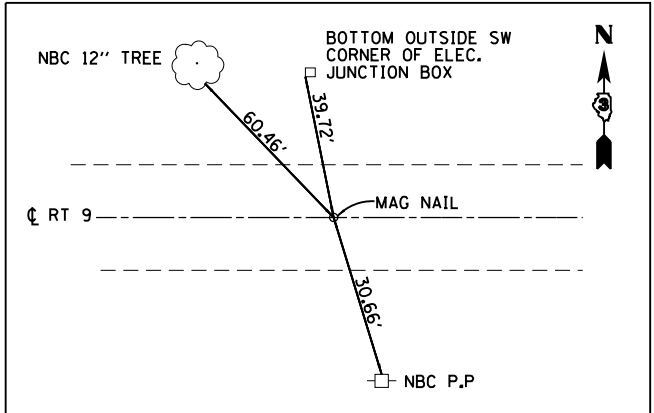
IL RT 9
 STA 873+69.42, 8.16' LT
 N=1383041.071
 E=9963278.636



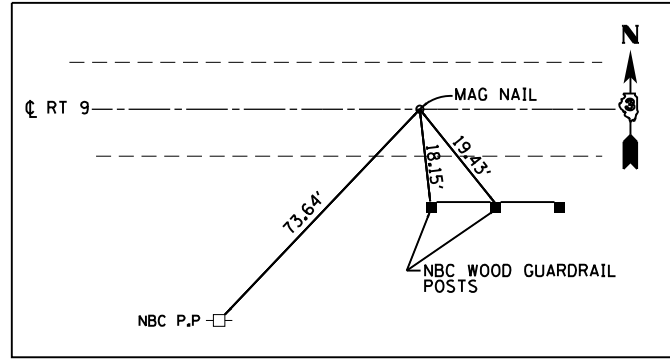
S 300E RD
 STA. 2+17.47
 N=1381343.183
 E=964652.672



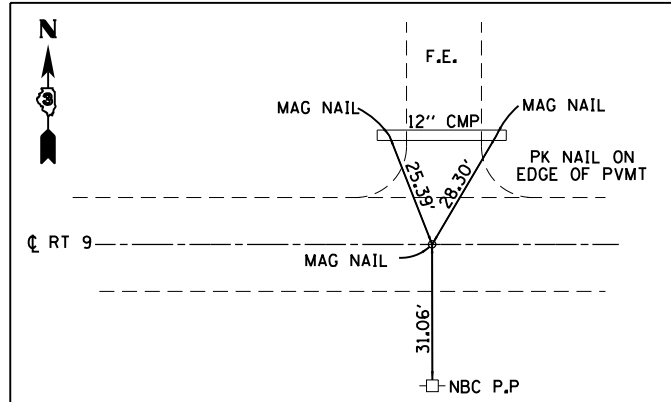
N 300E RD
 STA. 46+56.85
 N=1384782.494
 E=964667.260



IL RT 9
 STA. 849+78.28
 N=1383127.634
 E=965665.292



IL RT 9
 STA. 864+40.92
 N=1383124.344
 E=964209.335



IL RT 9
 STA. 886+39.31
 N=1383042.952
 E=962008.049



USER NAME = dmeyer	DESIGNED - JJO	REVISED -
PLOT SCALE = 60.0000' / in.	DRAWN - JJO	REVISED -
PLOT DATE = 8/13/2012	CHECKED - JML	REVISED -
	DATE - 08/10/12	REVISED -

STATE OF ILLINOIS
 DEPARTMENT OF TRANSPORTATION

ALIGNMENT, SURVEY TIES AND BENCHMARKS

SHEET OF SHEETS STA. TO STA.

F.A.P. RTE.	SECTION	COUNTY	TOTAL SHEETS	SHEET NO.
693	19BR	FORD	61	13
CONTRACT NO. 66A12				
ILLINOIS FED. AID PROJECT				