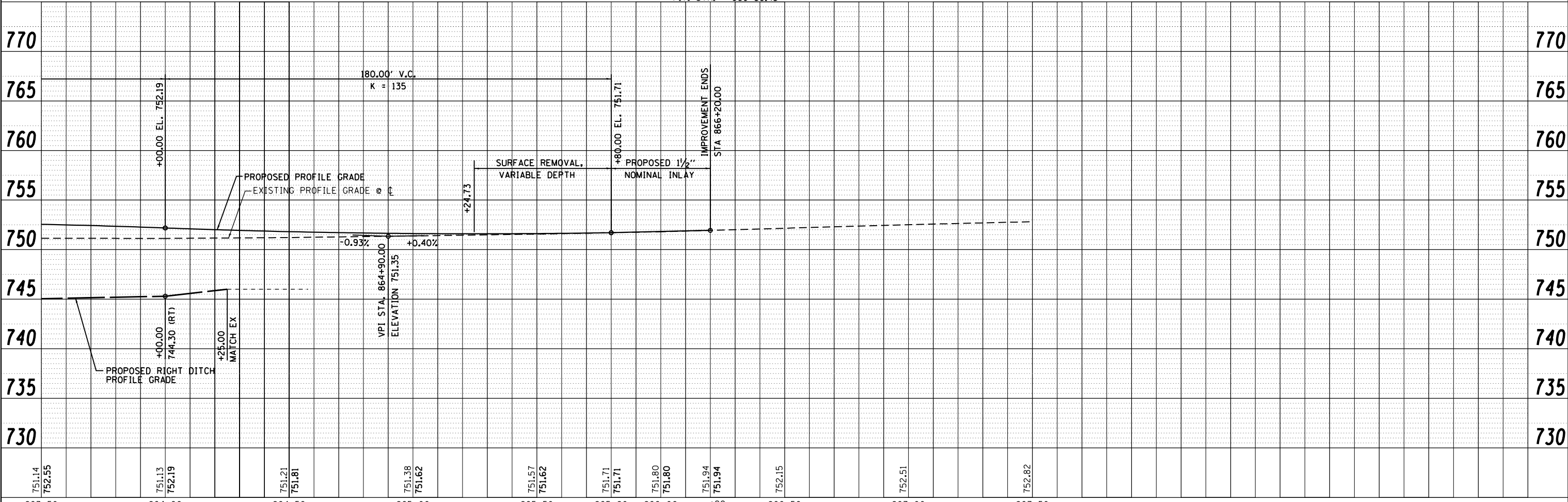
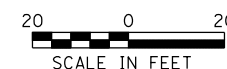
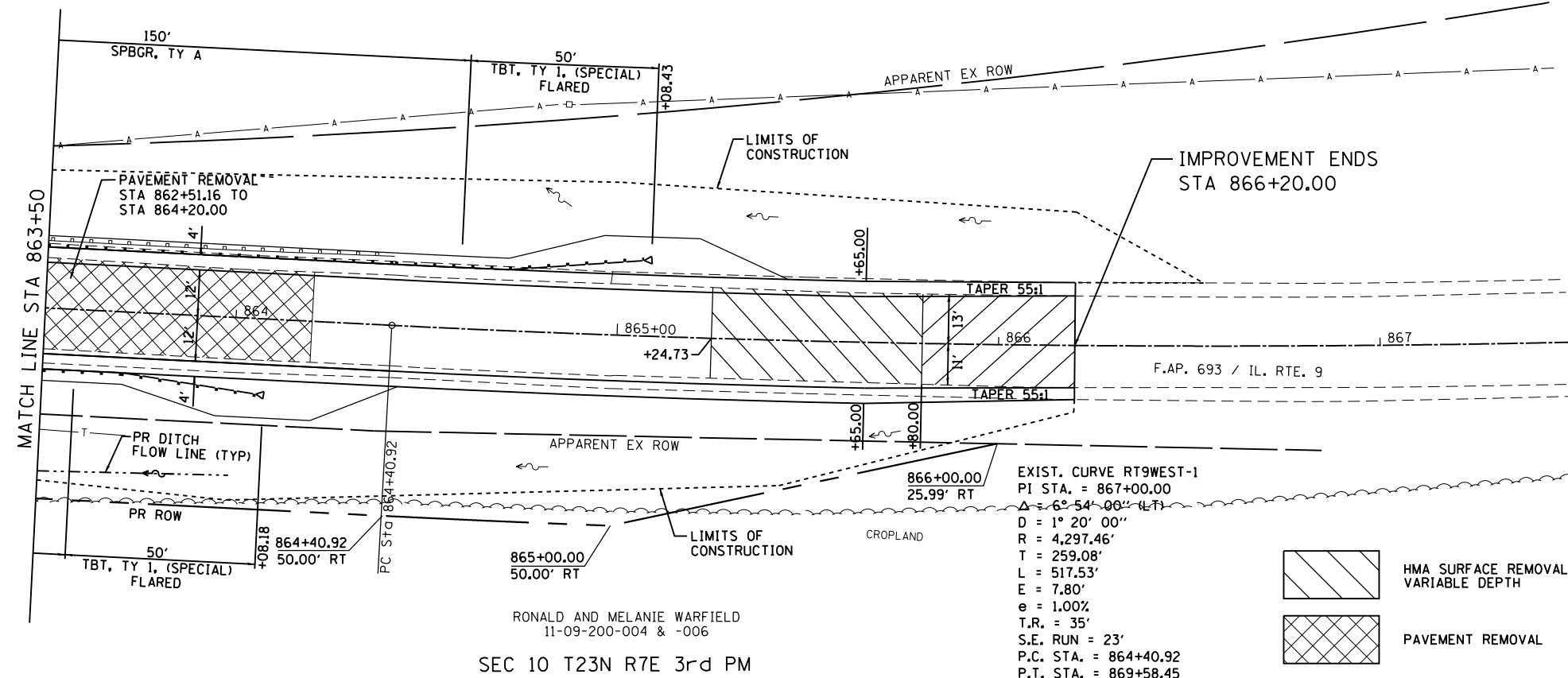


SEC 10 T23N R7E 3rd PM

NORFOLK & SOUTHERN RAILROAD  
11-09-502-002



PLAN	SURVEYED	DATE
	PLOTTED	
	ALIGNED	
	CHECKED	
	FILED	
	NO.	

PROFILE	SURVEYED	DATE
	PLOTTED	
	GRADES CHECKED	
	STRUCTURE NOTATIONS CHECKED	
	NO.	

**Farnsworth GROUP, INC.**  
2709 McGraw Drive  
Bloomington, Illinois 61704  
309/663-8435, 309/663-1571 fax

USER NAME = dmeyer  
DESIGNED -  
DRAWN -  
PLOT SCALE = 48.0000' / in.  
CHECKED -  
DATE = 08/10/12

REVISIED -  
REVISIED -  
REVISIED -  
REVISIED -

**STATE OF ILLINOIS  
DEPARTMENT OF TRANSPORTATION**

**IL. RTE. 9  
PLAN & PROFILE**

SCALE: SHEET NO. OF SHEETS STA. TO STA.

F.A.P. RTE. 693	SECTION 19BR	COUNTY FORD	TOTAL SHEETS 61	SHEET NO. 15
CONTRACT NO. 66A12				
ILLINOIS FED. AID PROJECT				