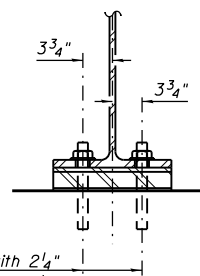


1/8" elastomeric neoprene leveling pad according to the material properties of Article 1052.02(a) of the Standard Specifications. Cost included with Structural Steel.



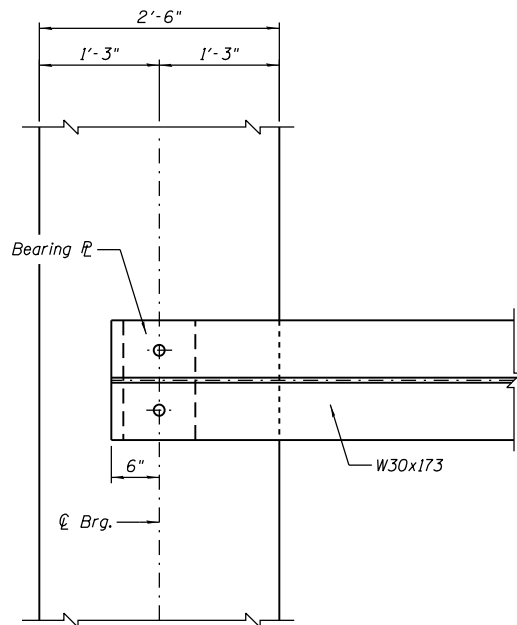
1" ϕ x 12" anchor bolts with 2 1/4" x 2 1/4" x 5/16" ϕ washer under nut.
1 3/8" x 2" slotted hole in flange.
1/2" ϕ holes in bearing plate.

SECTION A-A

ELEVATION AT ABUTMENTS

FIXED BEARING

(At East Abutment - 6 Required)
(At West Abutment - 6 Required)



BEARING PLAN AT ABUTMENTS

Notes:

Anchor bolts shall be ASTM F1554 all-thread (or an Engineer-approved alternate material) of the grade(s) and diameter(s) specified. The corresponding specified grade of AASHTO M314 anchor bolts may be used in lieu of ASTM F1554.

Anchor bolts at fixed bearings may be either cast in place or installed in holes drilled after the supported member is in place.

Drilled and set anchor bolts shall be installed according to Article 521.06 of the Standard Specifications.

BILL OF MATERIAL

Item	Unit	Total
Anchor Bolts, 1"	Each	24