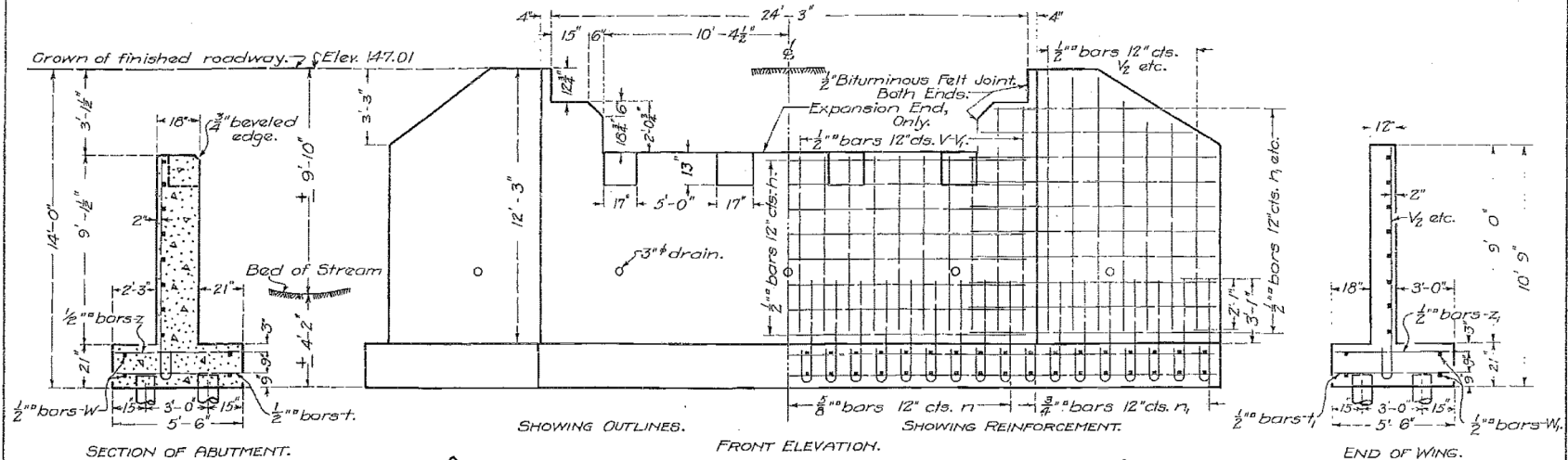
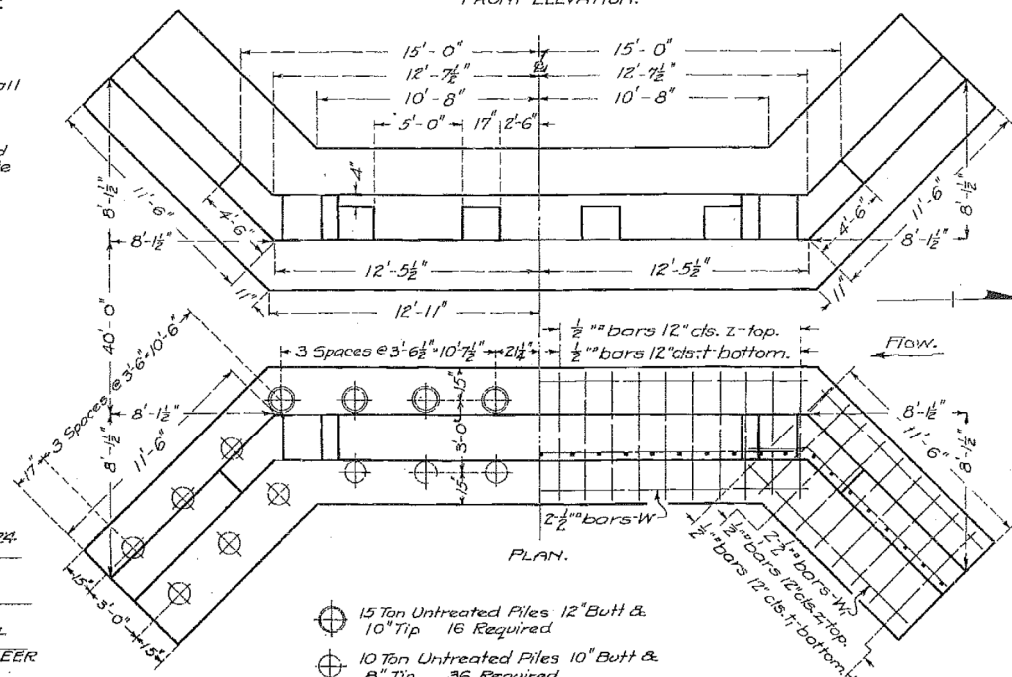


B.M. #91 Spike in Power Pole 30' Left Sta. 860+20 Elev. 143.80  
 Existing 36' Span 15' Roadway Steel Truss to be removed by bridge contractor.

Sheet No. 3  
 3 Sheets.



Class A concrete shall be used throughout. Proportions 1:2½:4. All reinforcing steel shall be securely wired in place before concrete is poured.



BILL OF MATERIAL.

Bars.	No.	Size.	Length.
V	40	½"	8'-0"
V1	8	"	10'-0"
V2	20	"	11'-0"
V3	12	"	9'-6"
V4	12	"	8'-0"
H	18	½"	25'-0"
H1	36	"	12'-6"
H2	8	"	9'-6"
D	48	¾"	5'-6"
D1	44	¾"	6'-0"
T	52	½"	5'-3"
T1	48	½"	5'-3"
Z	48	½"	5'-3"
Z1	40	½"	5'-3"
W	8	"	25'-0"
W1	16	"	12'-0"

Reinforcing Steel - Lbs. 3560  
 Concrete - Cu. Yds. 76.5

ASSEMBLED A.W. Bush  
 CHECKED J.F. Remondie

EXAMINED Nov. 12, 1924  
 BRIDGE ENGINEER  
 PASSED  
 ENGINEER OF DESIGN  
 APPROVED  
 CHIEF HIGHWAY ENGINEER

15 Ton Untreated Piles 12" Butt & 10" Tip 16 Required  
 10 Ton Untreated Piles 10" Butt & 8" Tip 36 Required

Sta. 862+20  
 STATE BOND ISSUE ROUTE 9  
 SECTION 19B FORD CO.  
 F.P. 224 97

FOR INFORMATIONAL  
 USE ONLY