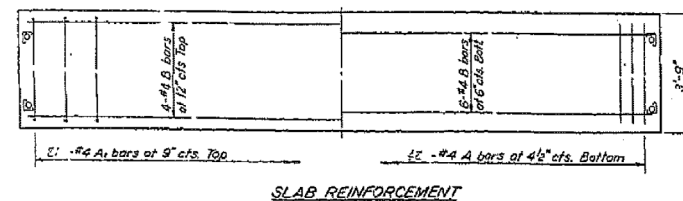
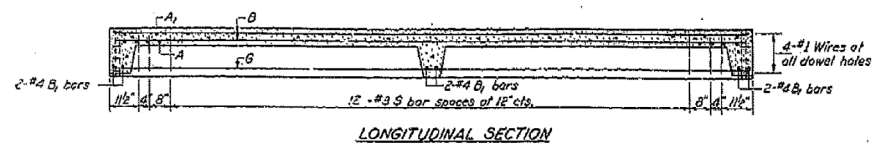
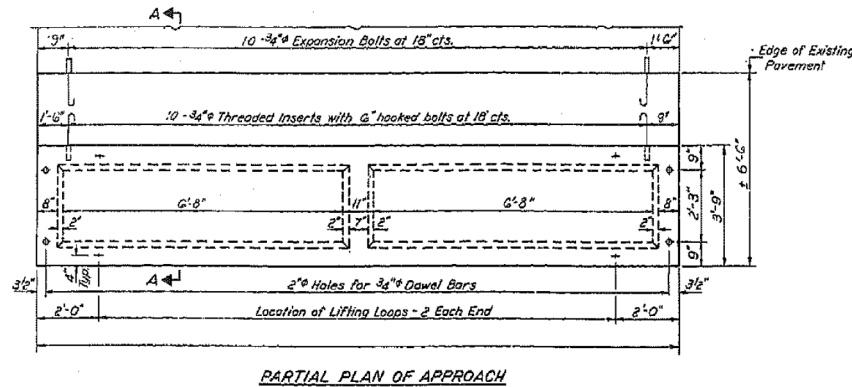
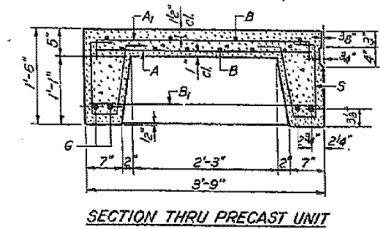
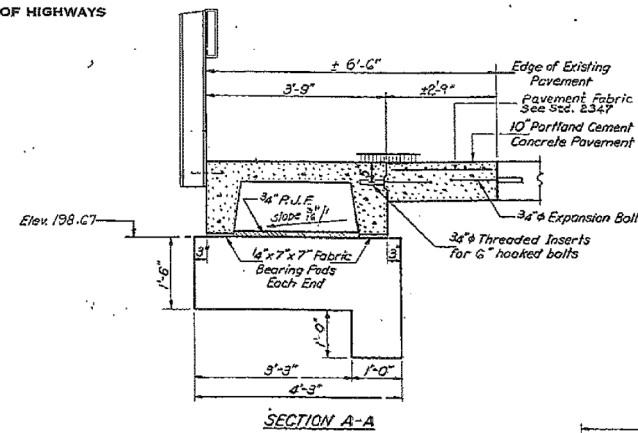
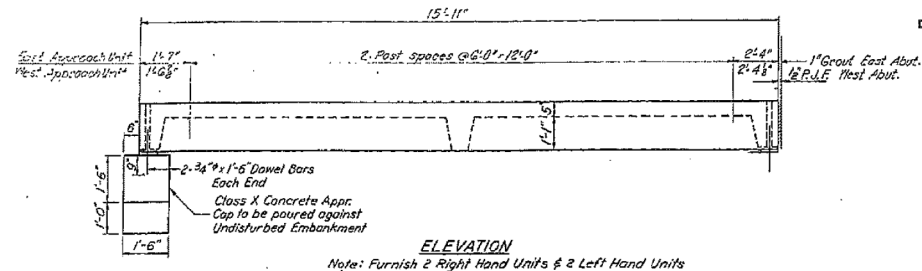


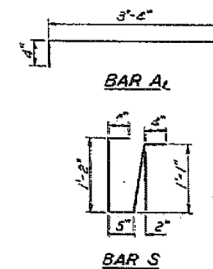
STATE OF ILLINOIS
DIVISION OF HIGHWAYS

PROJECT NO.	SECTION	SUBJECT	DATE	SHEET NO.
693	19BR	FORD 42	28	8



BAR LIST - ONE UNIT
Reinforcement to be cast into slab

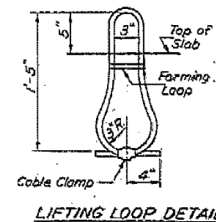
Bar No	Size	Length	Shape
A	#4	3'-3"	U
A1	#4	4'-0"	U
B	#4	15'-0"	U
B1	#4	3'-6"	U
G	#9	15'-0"	U
S	#3	3'-4"	U



NOTES
Unless otherwise approved by the Engineer, lifting loops shall be 1/2" 6x19 class wire rope with fiber core and shall have a minimum ultimate strength of 18,700 lbs. Loops shall be burned off after slab has been erected. Holes shall be drilled and anchor dowels grouted in place. Cost of reinforcement and accessories cast into the slab unit, bearing posts, furnishing, drilling for, placing and grouting anchor dowels and 3/4" hooked bolts is included in Unit bid price for "Precast Concrete Bridge Slab". The Precast Concrete Bridge Slab shall be erected and aligned with the exterior face of the exterior Deck Beam after Deck Beams are in final position.

BILL OF MATERIAL

Item	Unit	Quantity
Precast Concrete Bridge Slab	Sq. Ft.	2.39
Portland Cement Concrete Pavement (CC)	Sq. Yds.	2.0
Pavement Fabric	Sq. Yds.	2.0
Expansion Bolts 3/4"	Each	40
Class X Concrete	CUYDS.	1.6



STRESSES
f_c = 4,500 psi
f_t = 1,800 psi
f_s = 20,000 psi
n = 8
LOADING HS-20-44

APPROACH DETAILS
I.A.R.T. 693 SEC. 19BR-1
FORD COUNTY
STA. 662+28.00

DESIGNED: J.W. Thomas
CHECKED: Michael J. Trubitt
DRAWN: S.H.
CHECKED: M.K.T.
EXAMINED: June 16, 1978
PASSED: [Signature]
APPROVED: [Signature]

W-AP-1 20' Precast Approach Unit (Rt. L) 11-15-77

FOR INFORMATIONAL
USE ONLY