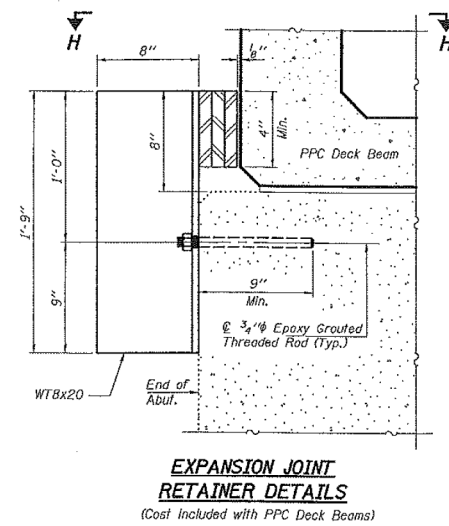
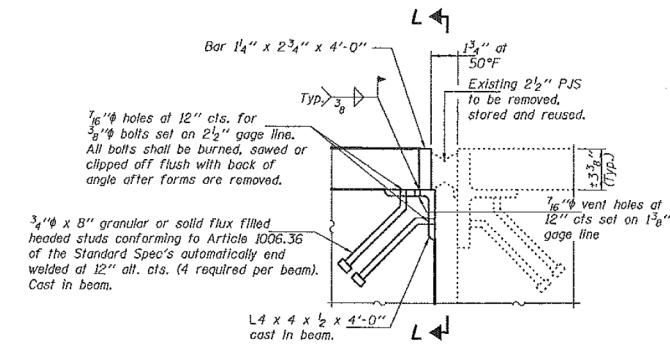
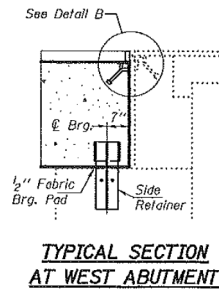
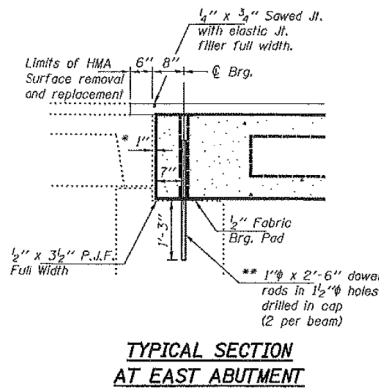
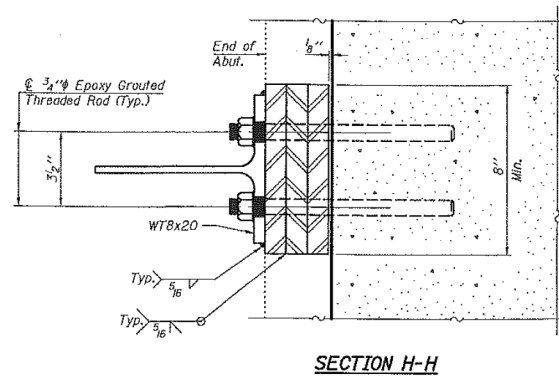
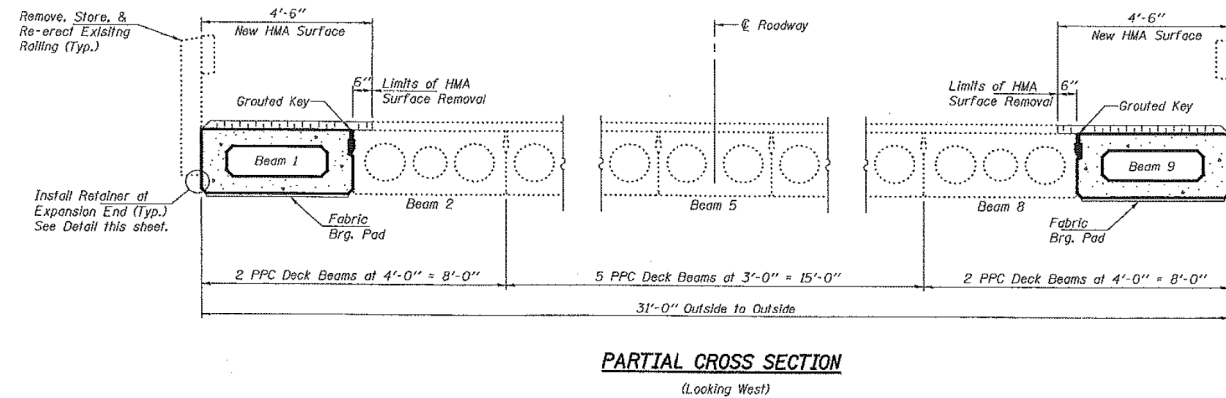


STATE OF ILLINOIS
DEPARTMENT OF TRANSPORTATION

STATE NO.	SECTION	COUNTY	DATE	SHEET	SHEET NO. 4
FA 693		FORD	15	14	5 SHEETS
Contract Number: 66B19					



- * 1" Joint shall be filled with non-shrink grout. Dimension may vary to accommodate tolerance in beam lengths.
- ** Existing dowel rods are to be burned off, ground flush, and sealed with epoxy prior to placement of new beams. Cost included in Removal of Existing PPC Deck Beams. After beams have been erected holes shall be drilled into cap and dowel rods placed. Dowel holes shall be filled with non-shrink grout to top of beam and allowed to cure a minimum of 24 hours prior to grouting the shear keys.



REPAIR DETAILS
FAP 693 OVER W. BR. DRUMMER CREEK
FORD COUNTY
SN 027-0005

DESIGNED	AJB	EXAMINED	MAY 2, 2008
CHECKED	ATH	PASSED	<i>Carl...</i>
DRAWN	Steffen		
CHECKED	AJB		

... \deck_beams_fy08\0270005.dgn 5/2/2008 2:50:06 PM

FOR INFORMATIONAL
USE ONLY

DESIGNED - TCR	REVISÉ
CHECKED - JML	REVISÉ
DRAWN - JWK	REVISÉ
CHECKED - MSW	REVISÉ
DATE - 8/10/12	

F.A.P. RTE.	SECTION	COUNTY	TOTAL SHEETS	SHEET NO.
693	19BR	FORD	61	52
CONTRACT NO. 66A12				
ILLINOIS FED. AID PROJECT				