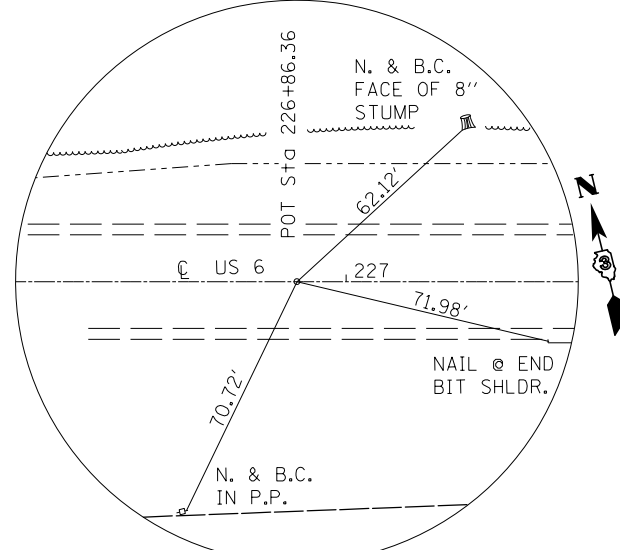
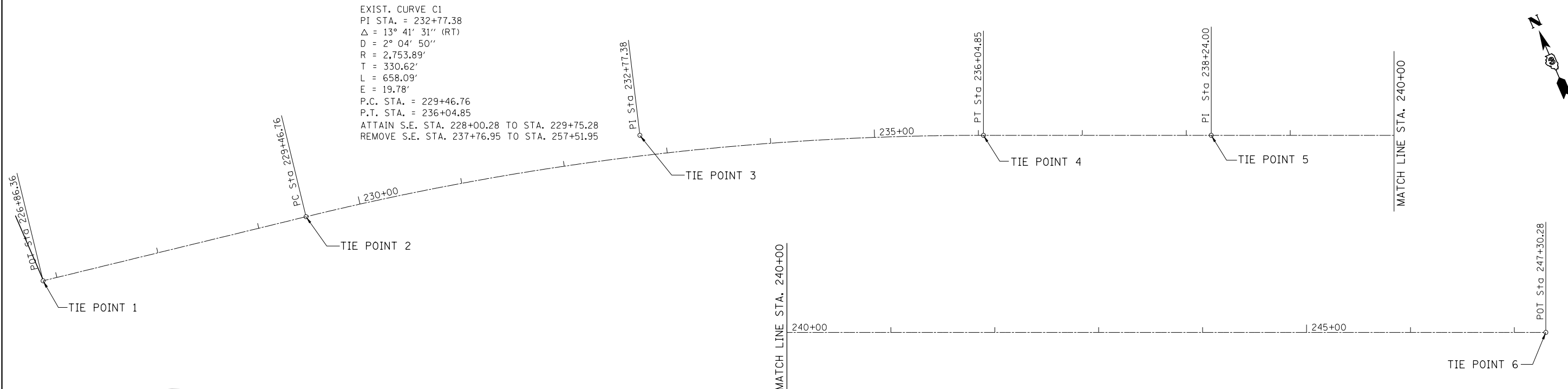
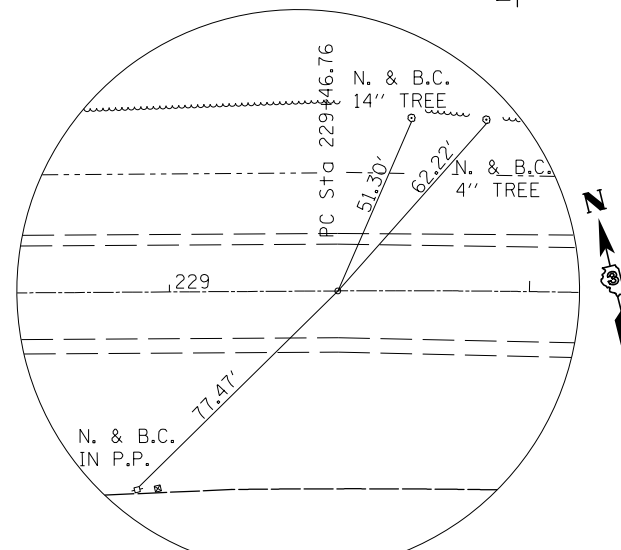


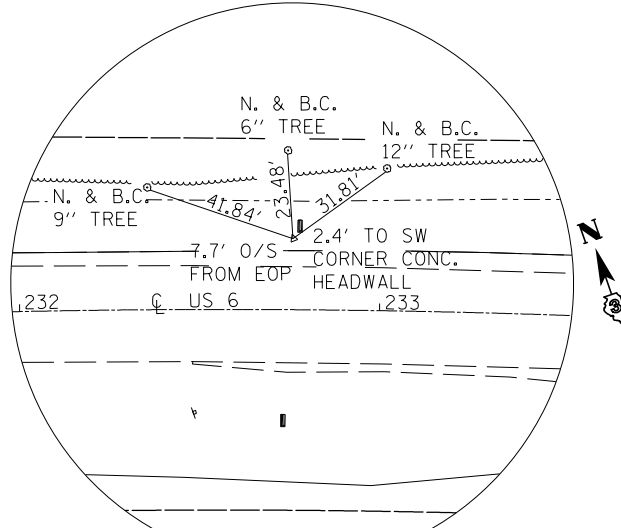
EXIST. CURVE C1
 PI STA. = 232+77.38
 $\Delta = 13^\circ 41' 31''$ (RT)
 $D = 2^\circ 04' 50''$
 $R = 2,753.89'$
 $T = 330.62'$
 $L = 658.09'$
 $E = 19.78'$
 P.C. STA. = 229+46.76
 P.T. STA. = 236+04.85
 ATTAIN S.E. STA. 228+00.28 TO STA. 229+75.28
 REMOVE S.E. STA. 237+76.95 TO STA. 257+51.95



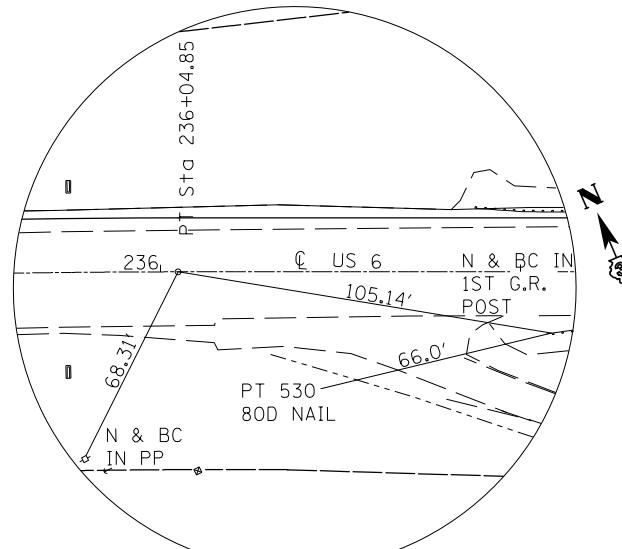
TIE POINT 1
 POT STA. 226+86.36



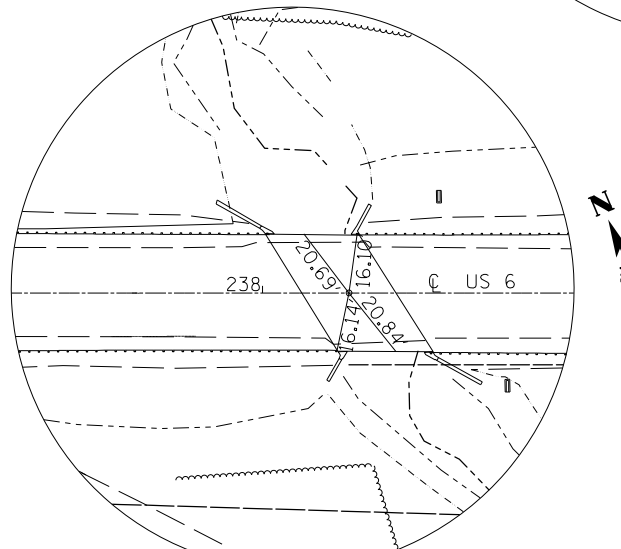
TIE POINT 2
 PC STA. 229+46.76



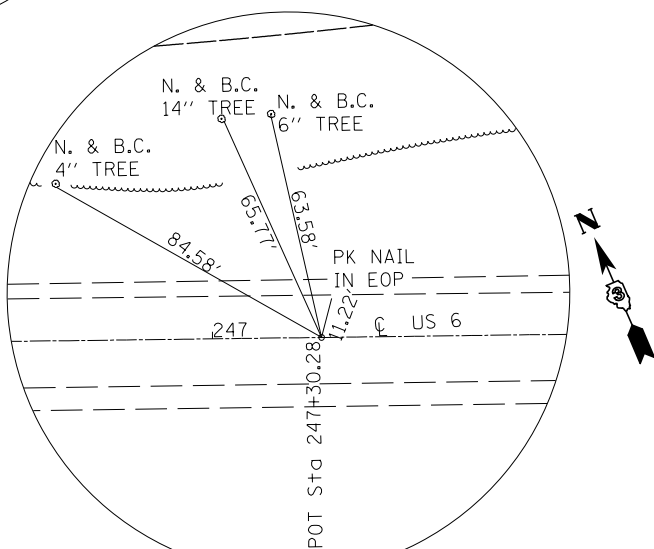
TIE POINT 3
 PI STA. 232+77.38



TIE POINT 4
 PT STA. 236+04.85



TIE POINT 5
 POT STA. 238+24.00



TIE POINT 6
 POT STA. 247+30.28

| | | | |
|-------------|-----------------------|-----------------|-----------|
| FILE NAME = | USER NAME = \$USER* | DESIGNED - RAC | REVISED - |
| *FILEL* | | DRAWN - RAC | REVISED - |
| | PLOT SCALE = \$SCALE* | CHECKED - DAZ | REVISED - |
| | PLOT DATE = \$DATE* | DATE - 08/10/12 | REVISED - |

STATE OF ILLINOIS
 DEPARTMENT OF TRANSPORTATION

ZROKA engineering
 Zroka Engineering, P.C.
 4216 North Hermitage
 Chicago, IL 60613
 SCALE: N.T.S. SHEET NO. 1 OF 1 SHEETS

ALIGNMENT AND
 SURVEY TIES

| | | | | |
|---------------------------|-----------------|----------------|-----------------|--------------|
| F.A.P. RTE. 623 | SECTION (H)BR-1 | COUNTY LASALLE | TOTAL SHEETS 32 | SHEET NO. 10 |
| CONTRACT NO. 66A13 | | | | |
| ILLINOIS FED. AID PROJECT | | | | |