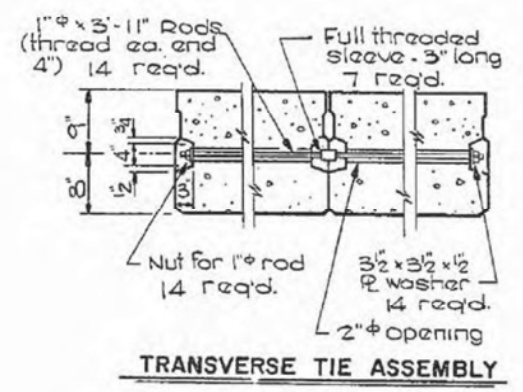
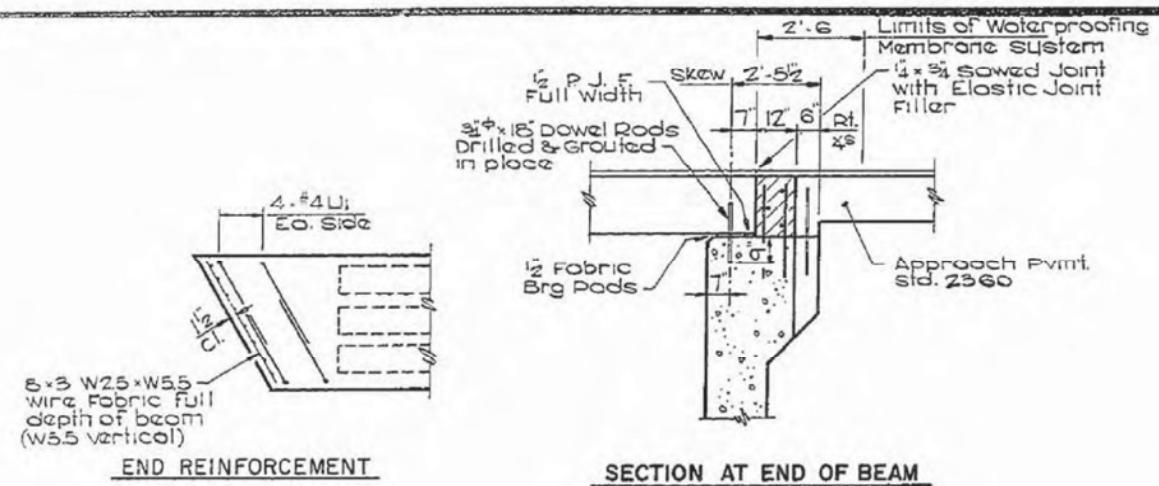
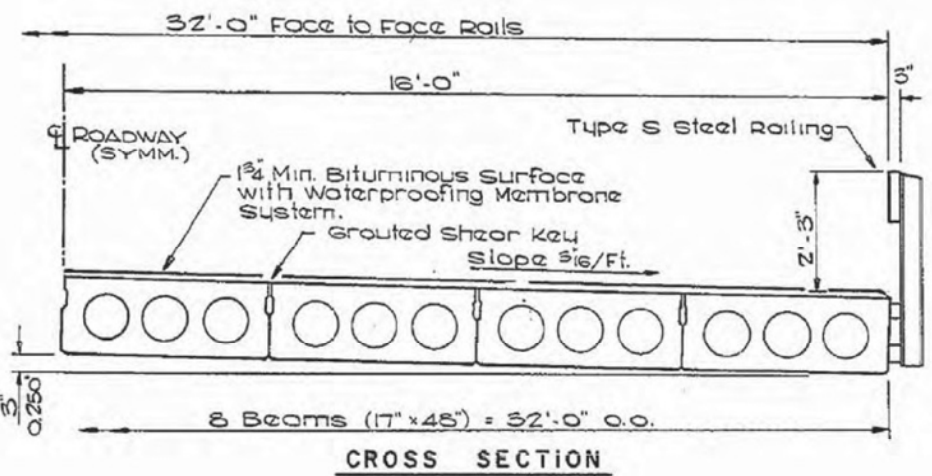
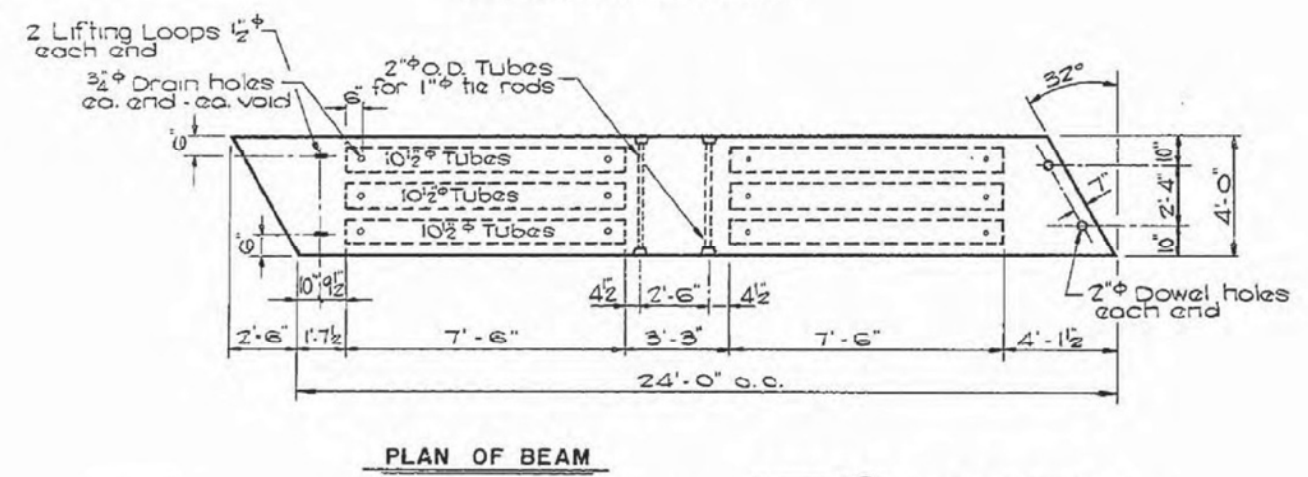


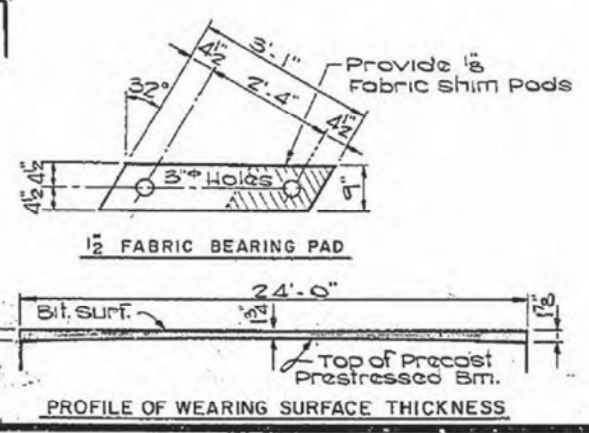
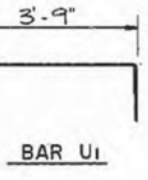
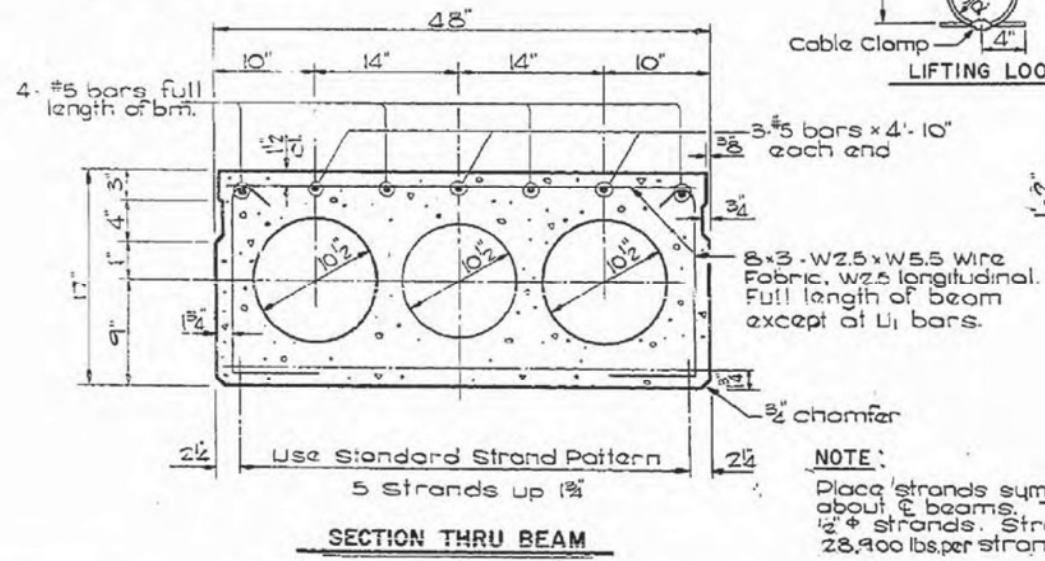
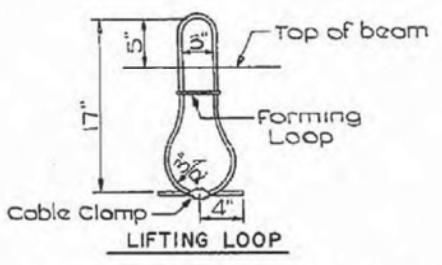
SECTION	623	H-BR-1	LA SALLE	26	52
PROJECT	F.A. ROUTE 623				



GENERAL NOTES:
 Prestressing steel shall be non-galvanized high strength stress-relieved 7-wire strand, grade 270. The nominal dia. shall be 1/2 inch and the nominal cross-sectional area shall be 0.153 Sq. inch. Reinforcement bars shall conform to AASHTO: M-31 or M-53, grade 60. The 1" dia. rods in the transverse tie assembly shall be tightened to a snug fit and set threads.
 Pockets that receive transverse tie bar on outside beam shall be filled with grout after transverse tie assembly is in place. Cost of reinforcement and accessories cost into beams, of bearing pods, and of grouting longitudinal shear keys is included in unit price bid for Precast Prestressed Concrete Deck Beams.
 Lifting loops shall be 1/2 diameter, 6 x 25 class wire rope with fiber core and shall have a minimum ultimate tensile strength of 21,000 lbs.
 Longitudinal shear keys shall be packed with a very dry mix of 2:1 sand and P.C. mortar.
 After beams have been erected, holes for the dowel anchors shall be drilled into the substructure and anchor dowels shall be grouted in place.
 A calcium Nitrite corrosion inhibitor, as covered in the special provisions, shall be used in the concrete for Precast Prestressed concrete Deck Beams.



OMIT SHEAR KEY ON OUTSIDE FACE OF EXTERIOR BEAMS



NOTE:
 Place strands symmetrically about 8 beams. 7 wire 1/2 inch strands. Stress to 28,000 lbs. per strand

BILL OF MATERIAL - DECK

ITEM	UNIT	QUANT.
Precast Prestressed Conc. Deck Beams(17)	Sq. Ft.	768

STA. 238+24.0
 DECK BEAM DETAILS
 SECTION H-BR-1
 F.A. ROUTE 623
 LA SALLE COUNTY

BRIDGE SHEET 2 OF 5

FILE NAME = ...04007-SN050-2054-005-ExstrngPlans.dgn

ZROKA Engineering, P.C.
 4216 North Hermitage
 Chicago, IL 60613

USER NAME = SAW	DESIGNED - JLA	REVISED -
PLOT SCALE = 0:2.0000 ' / IN.	CHECKED - DAZ	REVISED -
PLOT DATE = 8/15/2012	DRAWN - SAW	REVISED -
	CHECKED - JLA	REVISED -

STATE OF ILLINOIS
 DEPARTMENT OF TRANSPORTATION

EXISTING BRIDGE PLANS
 FOR INFORMATION ONLY

SHEET NO. 2 OF 7 SHEETS

F.A.P. RTE.	SECTION	COUNTY	TOTAL SHEETS	SHEET NO.
623	(H) BR-1	LA SALLE	32	20
CONTRACT NO. 66A13				
ILLINOIS FED. AID PROJECT				