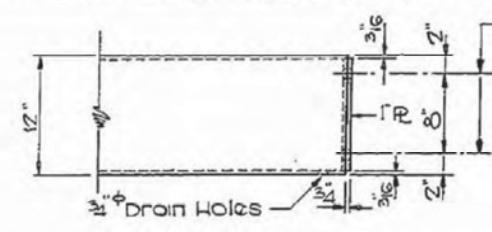
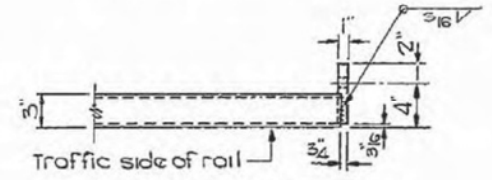


PROJECT NO.	623	SEC.	H-3R	COUNTY	LA SALLE	TOTAL SHEETS	26	SHEET NO.	53
PROJECT									

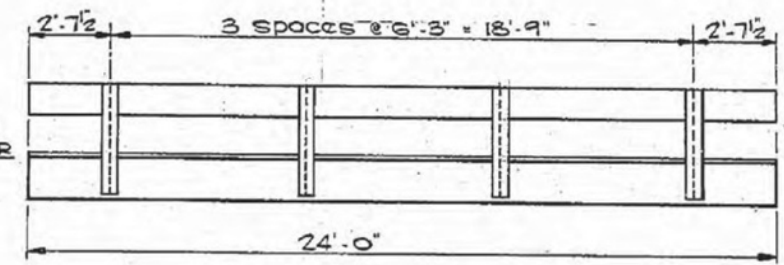


1/8" Holes for 1" x 4" machine bolts with 2 flat washers and locknuts for guard rail connection. Std. 2340.

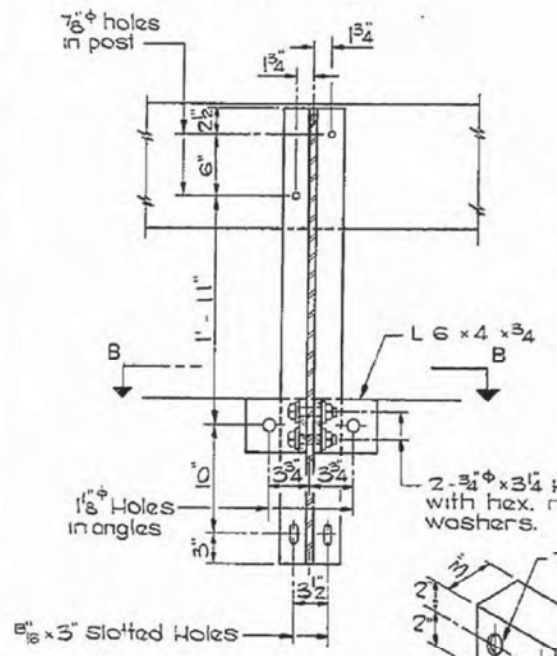


END OF RAIL DETAIL

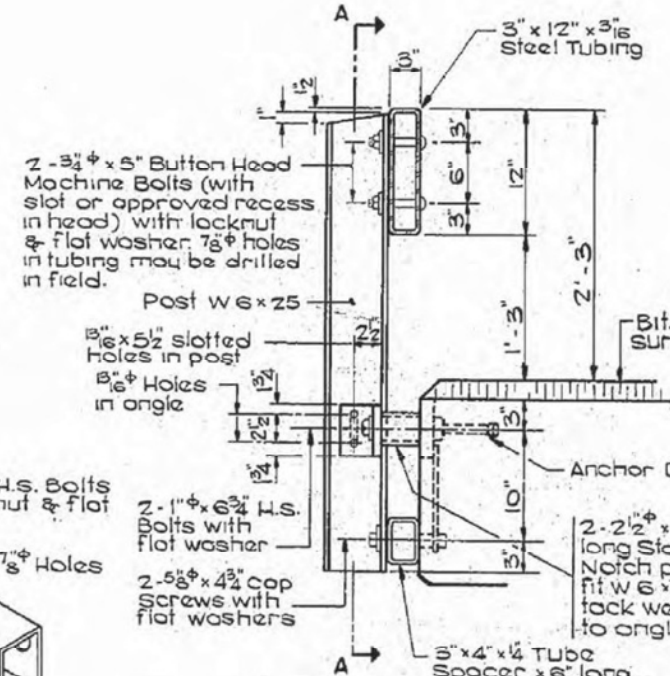
LOCATE NAMEPLATE AT SOUTH WEST CORNER



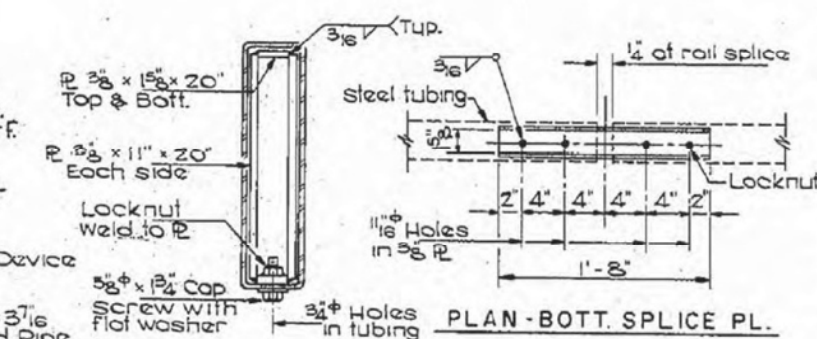
ELEVATION RAIL POST SPACING



SECTION A-A

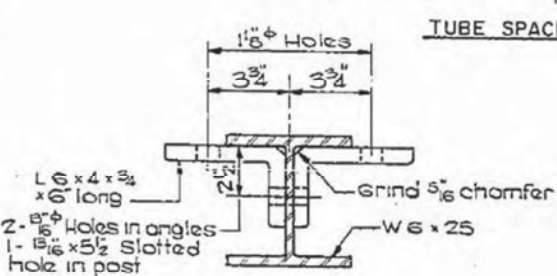


SECTION AT RAIL POST



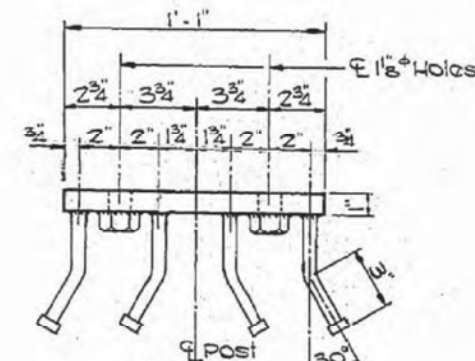
PLAN - BOTT. SPLICE PL.

SECTION AT RAIL SPLICE

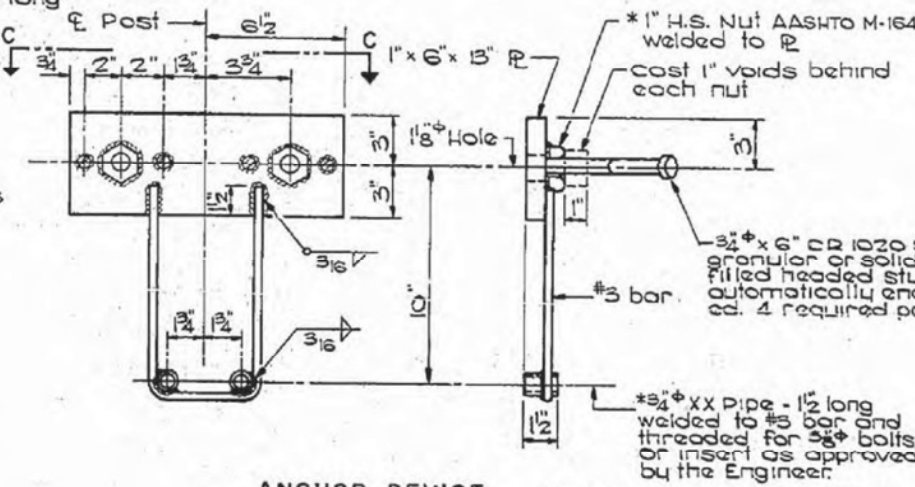


SECTION B-B

TUBE SPACER



SECTION C-C



ANCHOR DEVICE

NOTES

Hollow structural steel tubing shall conform to the requirements of ASTM designation A-500 Grade B or A-501 Structural Steel Tubing.

All other steel shapes and plates shall conform to the requirements of AASHTO Designation M-183 except posts and angles shall conform to AASHTO M-225 Grade 50.

Bolts, cap screws, and nuts shall conform to the requirements of ASTM designation A-307 except for high strength bolts, nuts and washers noted which shall conform to AASHTO M-164.

All bolts, nuts, cap screws, washer and lock washers shall be galvanized in accordance with AASHTO designation M-232.

All posts, railing, rail splices, anchor devices and angles shall be galvanized after shop fabrication in accordance with AASHTO designation M-111 and ASTM A-385. Galvanized rail shall not be painted.

Railing shall be in accordance with section 508 of the standard specifications, except as noted, and shall be paid for at the contract unit price per linear foot for STEEL RAILING, TYPE S.

All field drilled holes shall be coated with an approved zinc rich paint before erection.

The portion of the tube spacer in contact with concrete shall receive two coats of asphalt paint conforming to section 714.08 Type B or place 1/8 fabric bearing pad between the spacer & concrete.

The 3/4 dia. high strength bolts used to connect the 6 x 4 x 3/4 angles to the post shall be tightened in accordance with Article 507.04 (g) (3) of the Standard Specifications. The 1" dia. high strength bolts connecting the angles to the concrete shall be tightened to a snug fit and given an additional 1/8 turn. The 3/4 cap screws in bottom of posts shall be tightened to a snug fit only.

BILL OF MATERIAL

ITEM	UNIT	QUANT.
STEEL RAILING, TYPE S	LIN. FT.	48

STA. 238 + 240
 TYPE S STEEL RAILING
 SECTION H-BR-1
 FA. ROUTE 623
 LA SALLE COUNTY

BRIDGE SHEET 3 OF 5

FILE NAME = ...04007-S0050-2054-005-ExistingPlans.dgn

ZROKA engineering
 Zroka Engineering, P.C.
 4216 North Hermitage
 Chicago, IL 60613

USER NAME = SAW	DESIGNED - JLA	REVISED -
PLOT SCALE = 0:2.0000 ' / IN.	CHECKED - DAZ	REVISED -
PLOT DATE = 8/15/2012	DRAWN - SAW	REVISED -
	CHECKED - JLA	REVISED -

STATE OF ILLINOIS
 DEPARTMENT OF TRANSPORTATION

EXISTING BRIDGE PLANS
 FOR INFORMATION ONLY

SHEET NO. 3 OF 7 SHEETS

F.A.P. RTE.	SECTION	COUNTY	TOTAL SHEETS	SHEET NO.
623	(H) BR-1	LA SALLE	32	21
CONTRACT NO. 66A13				
ILLINOIS FED. AID PROJECT				