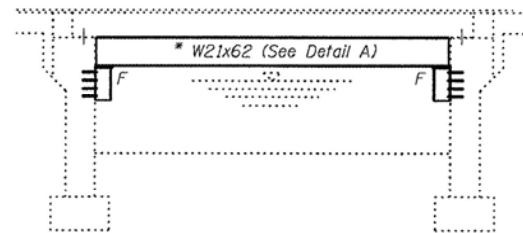


STATE OF ILLINOIS  
DEPARTMENT OF TRANSPORTATION

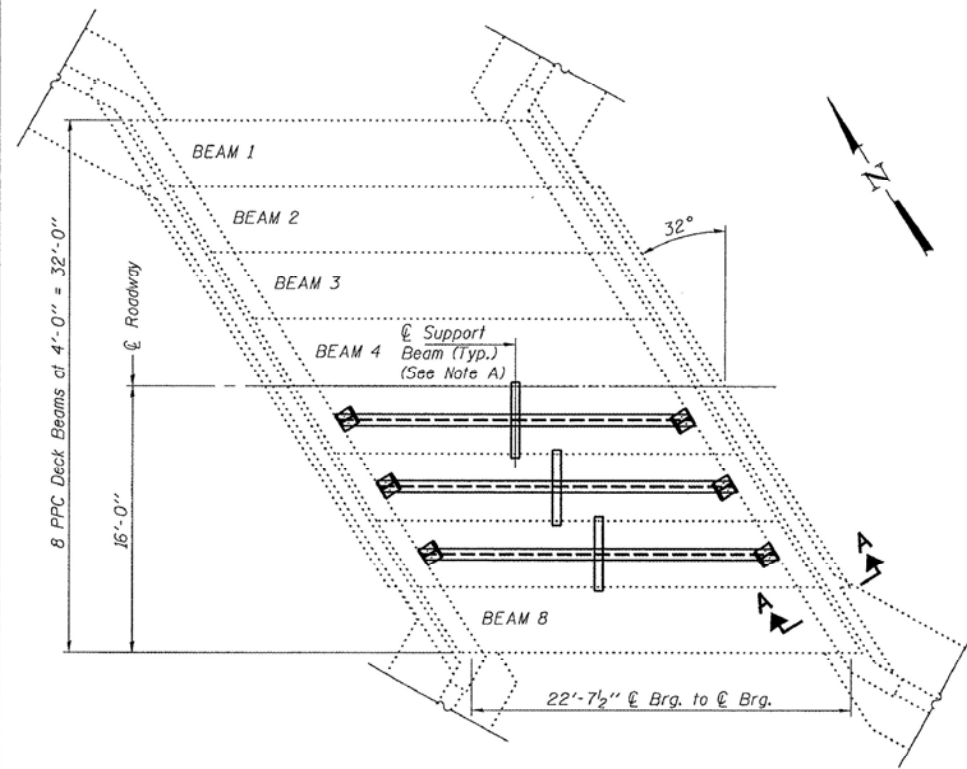
ROUTE NO.	SECTION	COUNTY	SHEETS	SHEET NO.
FA 623	#	LA SALLE	5	5
FED. ROAD DIST. NO. 7	ILLINOIS	FED. AID PROJECT		1 SHEETS

Contract Number: 66816  
\*(H-BR-1)

\* Contractor is to verify beam length prior to ordering material. Other sections meeting the section modulus requirements shown may be allowed subject to approval by the Bureau of Bridges and Structures, however, no additional payment will be allowed if the contractor chooses a heavier steel section than the one specified in the plans. Maximum girder depth = 24", Min. Sx = 127 in<sup>3</sup>.

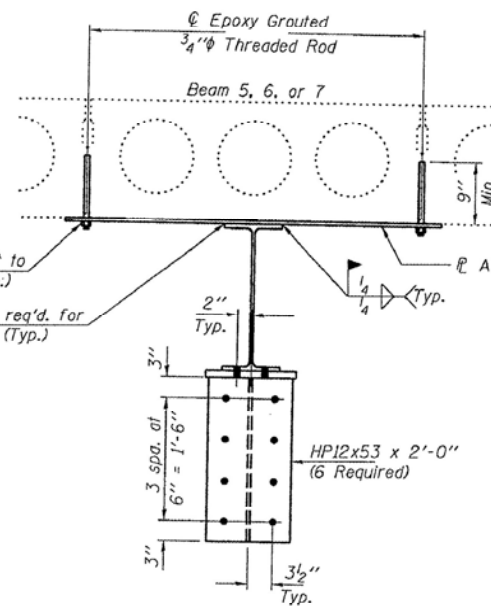


ELEVATION

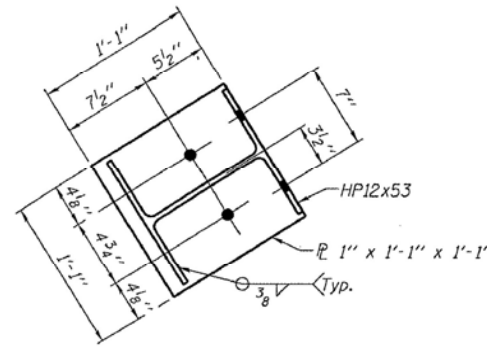


PLAN

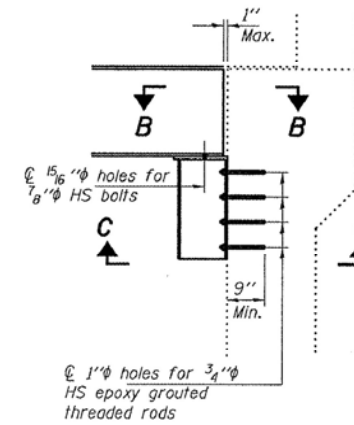
Note A:  
Transverse tie R's (1 per span). Place additional shims at midpoints between tie R's. Securely weld shims to top flange of support beam. Minimum shim size is 6" x flange width.



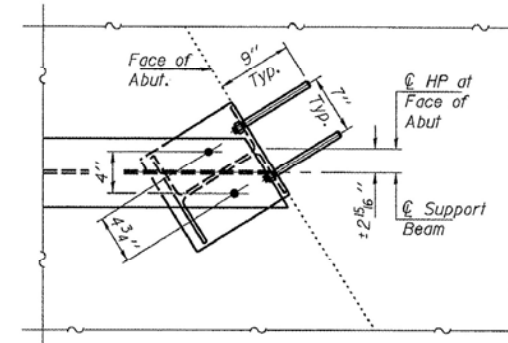
TYPICAL SECTION THRU SUPPORTED BEAM



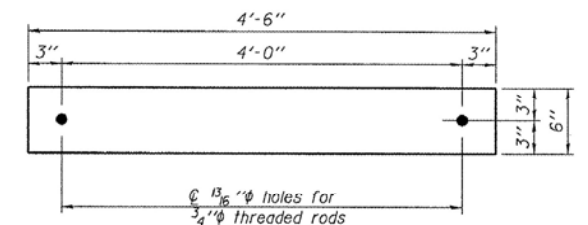
SECTION C-C



SECTION A-A



SECTION B-B

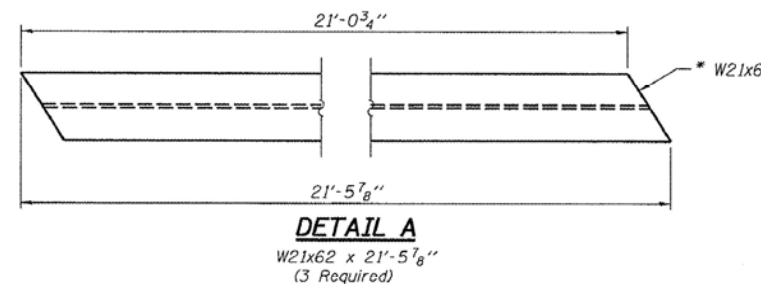


TRANSVERSE TIE R A  
R 1 1/2" x 4'-6" x 6" (3 Req'd)

TOTAL BILL OF MATERIAL

ITEM	UNIT	QUANTITY
Furnishing and Erecting Structural Steel	Pound	5130

PLAN AND ELEVATION  
FA 623  
LA SALLE COUNTY  
SN 050-0183



DETAIL A



Expires: November 30, 2008

DESIGNED	Victor H. Veliz	APRIL 17, 2008
CHECKED	Domenec Balera	EXAMINED
DRAWN	Steffen	PASSED
CHECKED	UHV OAB	



Zroka Engineering, P.C.  
4216 North Hermitage  
Chicago, IL 60613

USER NAME = SAW	DESIGNED - JLA	REVISED -
PLOT SCALE = 0:2.0000' / IN.	CHECKED - DAZ	REVISED -
PLOT DATE = 8/15/2012	DRAWN - SAW	REVISED -
	CHECKED - JLA	REVISED -

STATE OF ILLINOIS  
DEPARTMENT OF TRANSPORTATION

EXISTING BRIDGE PLANS  
FOR INFORMATION ONLY

SHEET NO. 6 OF 7 SHEETS

F.A.P. RTE.	SECTION	COUNTY	TOTAL SHEETS	SHEET NO.
623	(H) BR-1	LA SALLE	32	24
			CONTRACT NO. 66A13	
ILLINOIS FED. AID PROJECT				

FILE NAME = ...04007-SN050-2054-005-ExistingPlans.dgn

...deck\_beams\_fy08\0500183.dgn 17-Apr-08 08:16:17