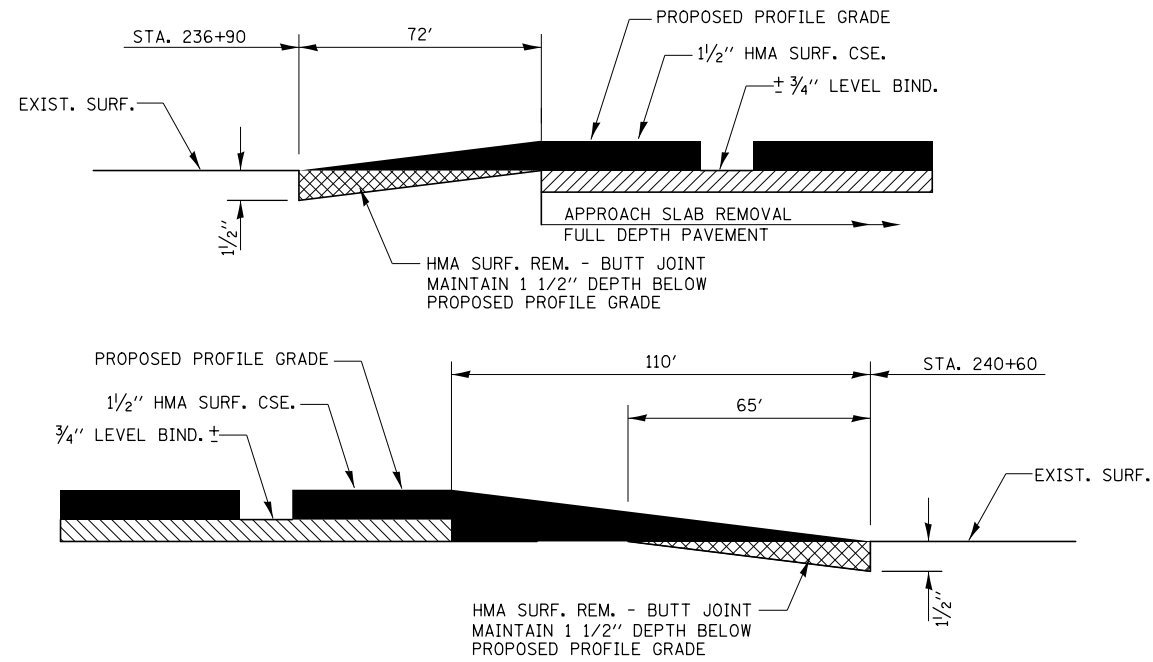
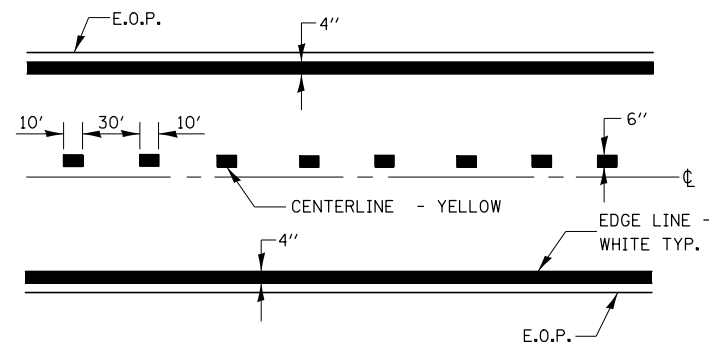


NOTE:

WHEN MILLING OPERATIONS PRODUCE A ROUNDED EDGE, THEN A SAW CUT SHALL BE USED TO MANUFACTURE A PERPENDICULAR EDGE AS SHOWN IN THE DETAIL. THE ENGINEER SHALL BE THE SOLE JUDGE CONCERNING THE USE OF THIS DETAIL

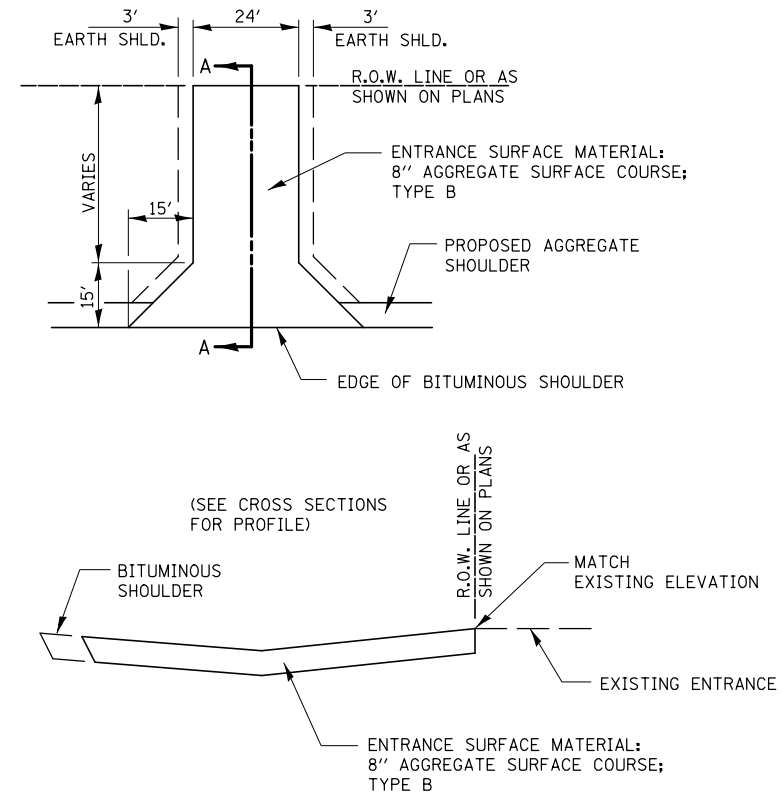


HMA DETAIL AT BUTT JOINTS

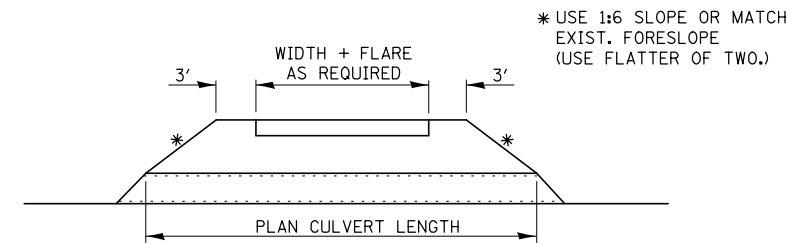


(SEE TYPICAL SECTIONS)

PAVEMENT MARKING



SECTION A-A



FIELD ENTRANCE DETAIL

FILE NAME =	USER NAME = \$USER*	DESIGNED - RAC	REVISED -	STATE OF ILLINOIS DEPARTMENT OF TRANSPORTATION	ZROKA engineering Zroka Engineering, P.C. 4216 North Hermitage Chicago, IL 60613	DETAILS	F.A.P. RTE.	SECTION	COUNTY	TOTAL SHEETS	SHEET NO.
\$FILEL\$		DRAWN - RAC	REVISED -				623	(H)BR-1	LASALLE	32	26
		CHECKED - DAZ	REVISED -				CONTRACT NO. 66A13				
		DATE - 08/10/12	REVISED -				ILLINOIS FED. AID PROJECT				
					SCALE: N.T.S.	SHEET NO. 1 OF 2 SHEETS					