

STATE OF ILLINOIS  
 DEPARTMENT OF TRANSPORTATION  
 DIVISION OF HIGHWAYS

**PROPOSED  
 HIGHWAY PLANS**

VARIOUS ROUTES  
 SECTION D3 BRIDGE DECK SEALING 2013

BRIDGE DECK SEALING  
 VARIOUS COUNTIES

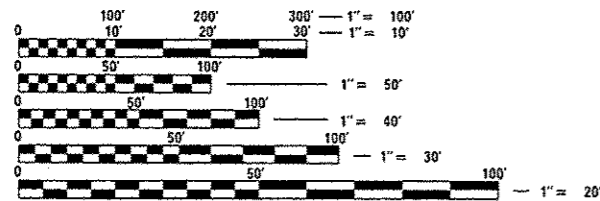
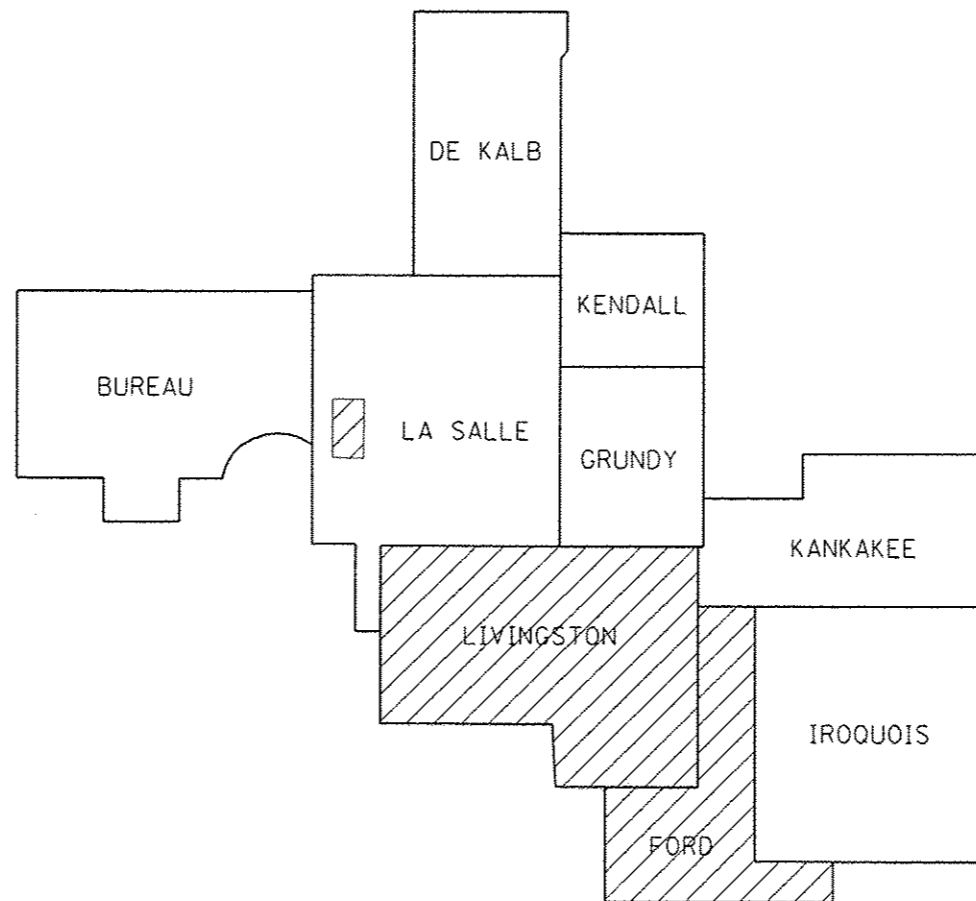
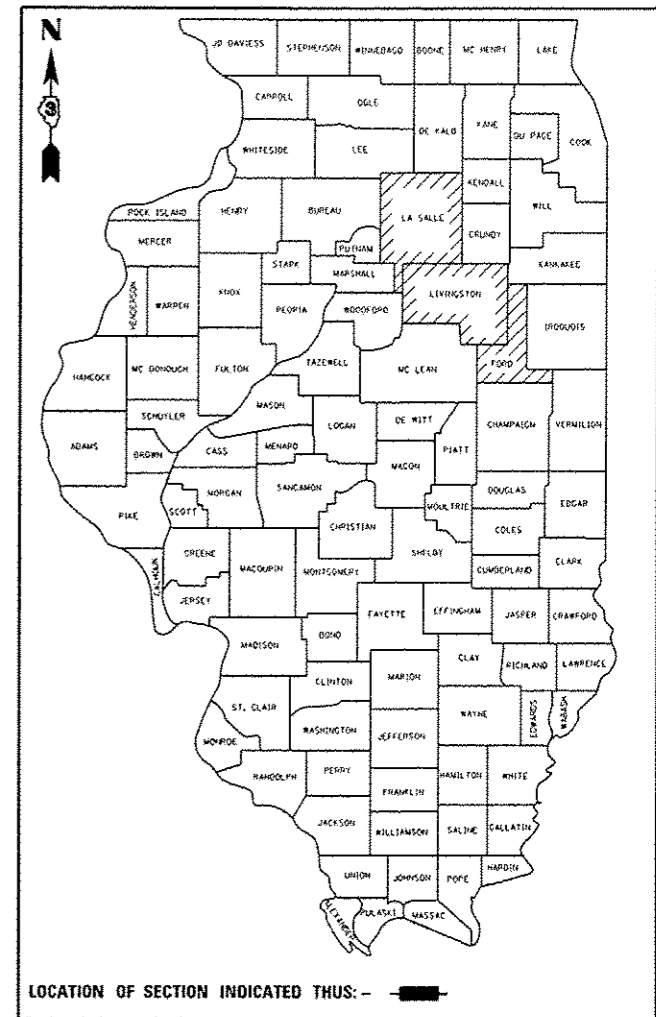
C-93-057-12

FOR INDEX OF SHEETS, SEE SHEET NO. 2

F.A. RTE.	SECTION	COUNTY	TOTAL SHEETS	SHEET NO.
VAR	.	VARIOUS	9	1
		ILLINOIS	CONTRACT NO. 66B87	

\*03 BRIDGE DECK SEALING 2013

D-93-030-12



FULL SIZE PLANS HAVE BEEN PREPARED USING STANDARD ENGINEERING SCALES. REDUCED SIZED PLANS WILL NOT CONFORM TO STANDARD SCALES. IN MAKING MEASUREMENTS ON REDUCED PLANS, THE ABOVE SCALES MAY BE USED.

J.U.L.I.E.  
 JOINT UTILITY LOCATION INFORMATION FOR EXCAVATION  
 1-800-892-0123  
 OR 811

PROJECT ENGINEER: CRAIG REED, P.E. 815-434-8420  
 UNIT CHIEF: BRAD DUNCAN, P.E. 815-434-8562

CONTRACT NO. 66B87

STATE OF ILLINOIS  
 DEPARTMENT OF TRANSPORTATION  
 DIVISION OF HIGHWAYS

SUBMITTED August 20 20 12  
*Eric S. Therkildsen*  
 DEPUTY DIRECTOR OF HIGHWAYS, REGION ENGINEER

October 5 20 12  
*John P. Baranzelli, PE, Inc.*  
 ENGINEER OF DESIGN AND ENVIRONMENT

October 5 20 12  
*William R. Frey, Inc.*  
 DIRECTOR OF HIGHWAYS, CHIEF ENGINEER

PRINTED BY THE AUTHORITY  
 OF THE STATE OF ILLINOIS