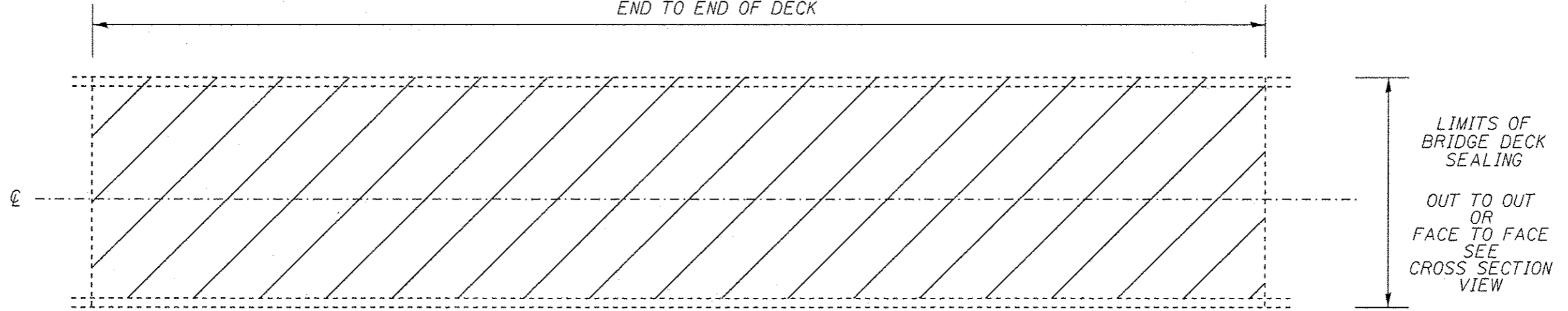


LIMITS OF BRIDGE DECK SEALING  
END TO END OF DECK

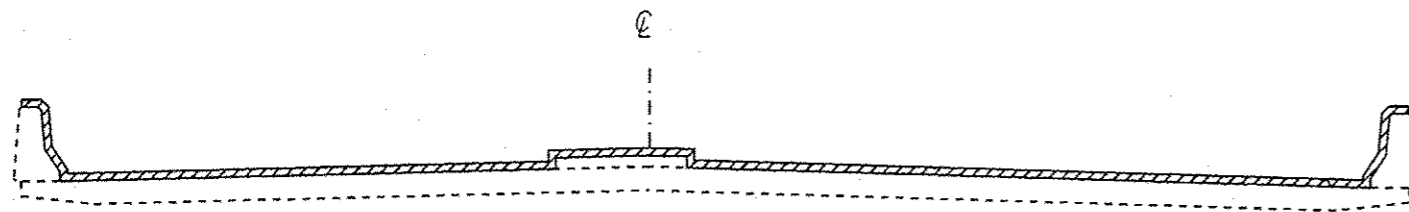


PLAN VIEW

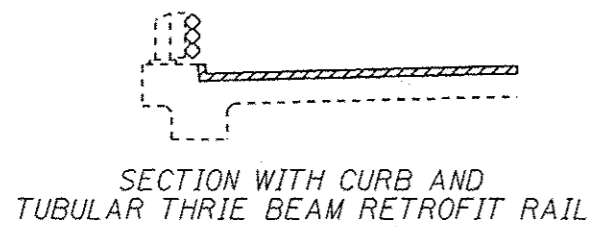
NOTE: BRIDGE APPROACH PAVEMENT SHALL NOT BE SEALED.

EXISTING PAVEMENT MARKINGS SHALL BE TEMPORARILY COVERED PRIOR TO APPLICATION OF THE DECK SURFACE TREATMENT, TO PREVENT THE MATERIAL FROM BEING APPLIED TO THE MARKINGS AND TO PROTECT THE REFLECTIVE PROPERTIES OF THE MARKINGS. THE TEMPORARY COVERING MATERIAL USED SHALL BE SUCH THAT IT WILL NOT AFFECT THE MARKING'S REFLECTIVITY WHEN REMOVED AFTER APPLICATION OF THE DECK SURFACE TREATMENT AND PRIOR TO OPENING TO TRAFFIC. COST INCLUDED WITH CONCRETE SEALER.

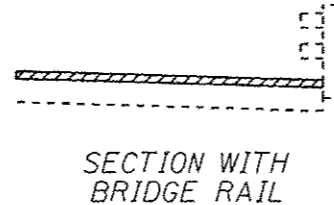
EXISTING EXPANSION JOINTS SHALL BE TEMPORARILY COVERED, PRIOR TO APPLICATION OF THE DECK SURFACE TREATMENT, TO PREVENT THE MATERIAL FROM BEING APPLIED TO THE JOINTS. THE TEMPORARY COVERING SHALL BE REMOVED AFTER THE APPLICATION OF THE DECK SURFACE TREATMENT AND PRIOR TO OPENING TO TRAFFIC. COST IS INCLUDED WITH CONCRETE SEALER.



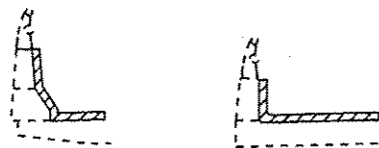
SECTION WITH  
PARAPET AND MEDIAN



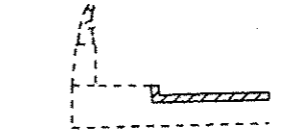
SECTION WITH CURB AND  
TUBULAR THRIE BEAM RETROFIT RAIL



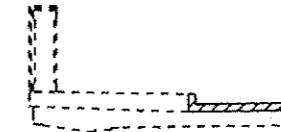
SECTION WITH  
BRIDGE RAIL



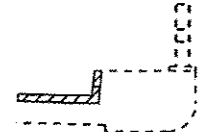
SECTION WITH CONCRETE  
AND ALUMINUM RAILING



CONCRETE AND  
ALUMINUM RAILING




CONCRETE  
BRIDGE RAILING



BRIDGE RAIL

VARIOUS SECTIONS WITH SIDEWALK AND/OR CONCRETE CURB

 AREA TO BE SEALED

NOT TO SCALE

FILE NAME *	USER NAME * duncanbd	DESIGNED -	REVISED -	<b>STATE OF ILLINOIS DEPARTMENT OF TRANSPORTATION</b>	<b>BRIDGE AND PARAPET SEALING DETAILS</b>			F.A. RTE.	SECTION	COUNTY	TOTAL SHEETS	SHEET NO.
dr:\pwork\p\dot\duncanbd\0288642\036687-shl\rdetail.dgn		DRAWN -	REVISED -					VAR		VARIOUS	9	9
	PLOT SCALE * 100.0000 / 1 in.	CHECKED -	REVISED -		SCALE: SHEET NO. OF SHEETS STA. TO STA.			*03 BRIDGE DECK SEALING 2013		CONTRACT NO. 66B87		
	PLOT DATE * 8/17/2012	DATE -	REVISED -					ILLINOIS FED. AID PROJECT				