

F.A.P. RTE.	SECTION	COUNTY	TOTAL SHEETS	SHEET NO.
840	(140)N, TS-3	KANKAKEE	29	1
		ILLINOIS	CONTRACT NO. 66C32	

STATE OF ILLINOIS
DEPARTMENT OF TRANSPORTATION
DIVISION OF HIGHWAYS
**PROPOSED
HIGHWAY PLANS**

**FAP ROUTE 840 (IL 50)
SECTION (140)N, TS-3
PROJECT : ACF-0840(066)
TRAFFIC SIGNAL MODERNIZATION & WIDENING
KANKAKEE COUNTY**

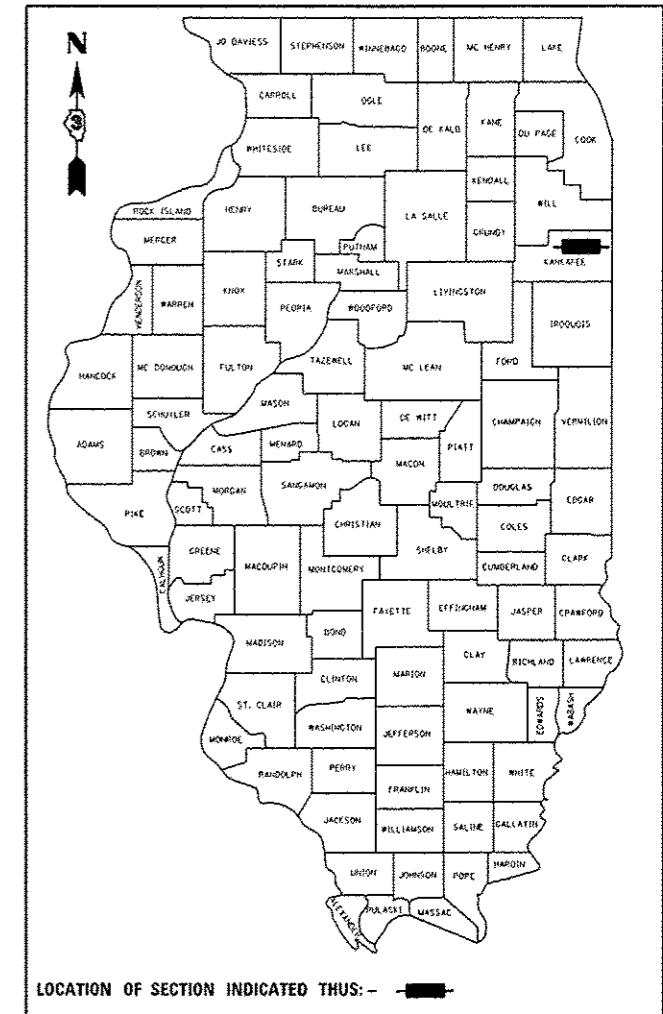
C-93-128-12

INDEX OF SHEETS

- 1 COVER SHEET
- 2 GENERAL NOTES, STANDARDS
- 3- 10 SUMMARY OF QUANTITIES
- 11-12 TYPICAL SECTIONS
- 13 SCHEDULES
- 14 ALIGNMENT SHEET
- 15 SIGNALS GENERAL NOTES, QUANTITIES
- 16 SIGNAL SCHEDULES
- 17 TRAFFIC SIGNAL PLAN
- 18 CABLE PLAN
- 19-20 MAST ARM ASSEMBLY DETAILS
- 21 PAVEMENT MARKING SHEET
- 22 R.O.W. SHEET
- 23-24 CADD DETAILS
- 25-27 CROSS-SECTIONS LARRY POWER RD. WEST
- 28-29 CROSS-SECTIONS IL 50 SOUTH

FOR LIST OF HIGHWAY STANDARDS, SEE SHEET NO. 2

D-93-027-12

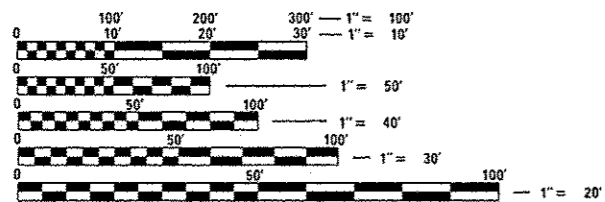
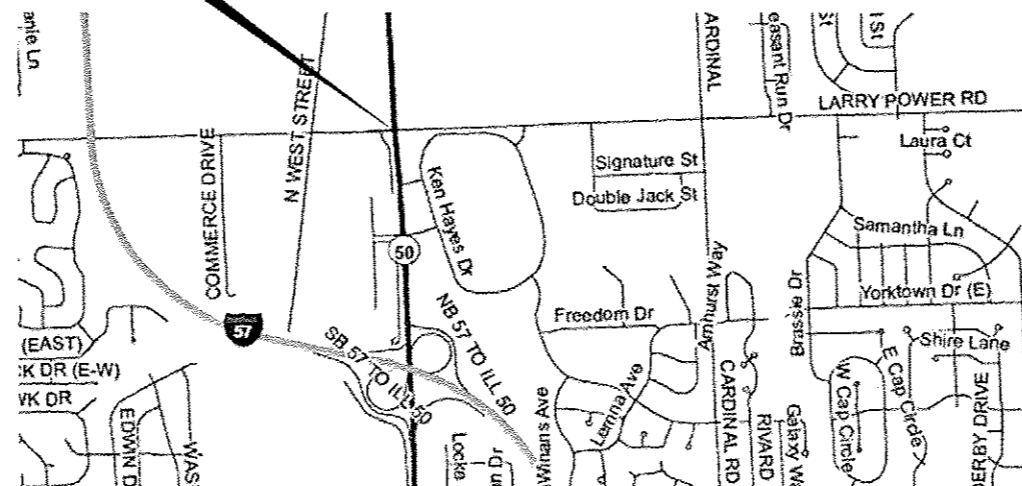


LOCATION OF SECTION INDICATED THUS: - [black rectangle] -

**IL 50 - OTHER PRINCIPAL ARTERIAL
LARRY POWER RD EAST - URBAN COLLECTOR
LARRY POWER RD WEST - MINOR URBAN ARTERIAL**

	2010 ADT	SU	MU	PV
IL 50	21700	750	400	20550
LARRY POWER RD EAST	3800	200	125	3475
LARRY POWER RD WEST	8200	725	125	7350

**PROJECT LOCATION
STA. 2+89.34 IL 50
& LARRY POWER RD.**



FULL SIZE PLANS HAVE BEEN PREPARED USING STANDARD ENGINEERING SCALES. REDUCED SIZED PLANS WILL NOT CONFORM TO STANDARD SCALES. IN MAKING MEASUREMENTS ON REDUCED PLANS, THE ABOVE SCALES MAY BE USED.

J.U.L.I.E.
JOINT UTILITY LOCATION INFORMATION FOR EXCAVATION
1-800-892-0123
OR 811

**PROJECT ENGINEER: JOE KANNEL, P.E.
UNIT CHIEF: SCOTT A. FERGUSON, P.E.**

GROSS & NET LENGTH = SPOT INTERSECTION IMPROVEMENT

CONTRACT NO. 66C32

**PRINTED BY THE AUTHORITY
OF THE STATE OF ILLINOIS**

STATE OF ILLINOIS
DEPARTMENT OF TRANSPORTATION
DIVISION OF HIGHWAYS

SUBMITTED 8/27/2012

[Signature]
DEPUTY DIRECTOR OF HIGHWAYS, REGION ENGINEER

October 5 2012
John D. Baramelli P.E.
ENGINEER OF DESIGN AND ENVIRONMENT

October 5 2012
William R. Freyler
DIRECTOR OF HIGHWAYS, CHIEF ENGINEER