

SECTION 16, T.31N., R.12E., 3RD. P.M.

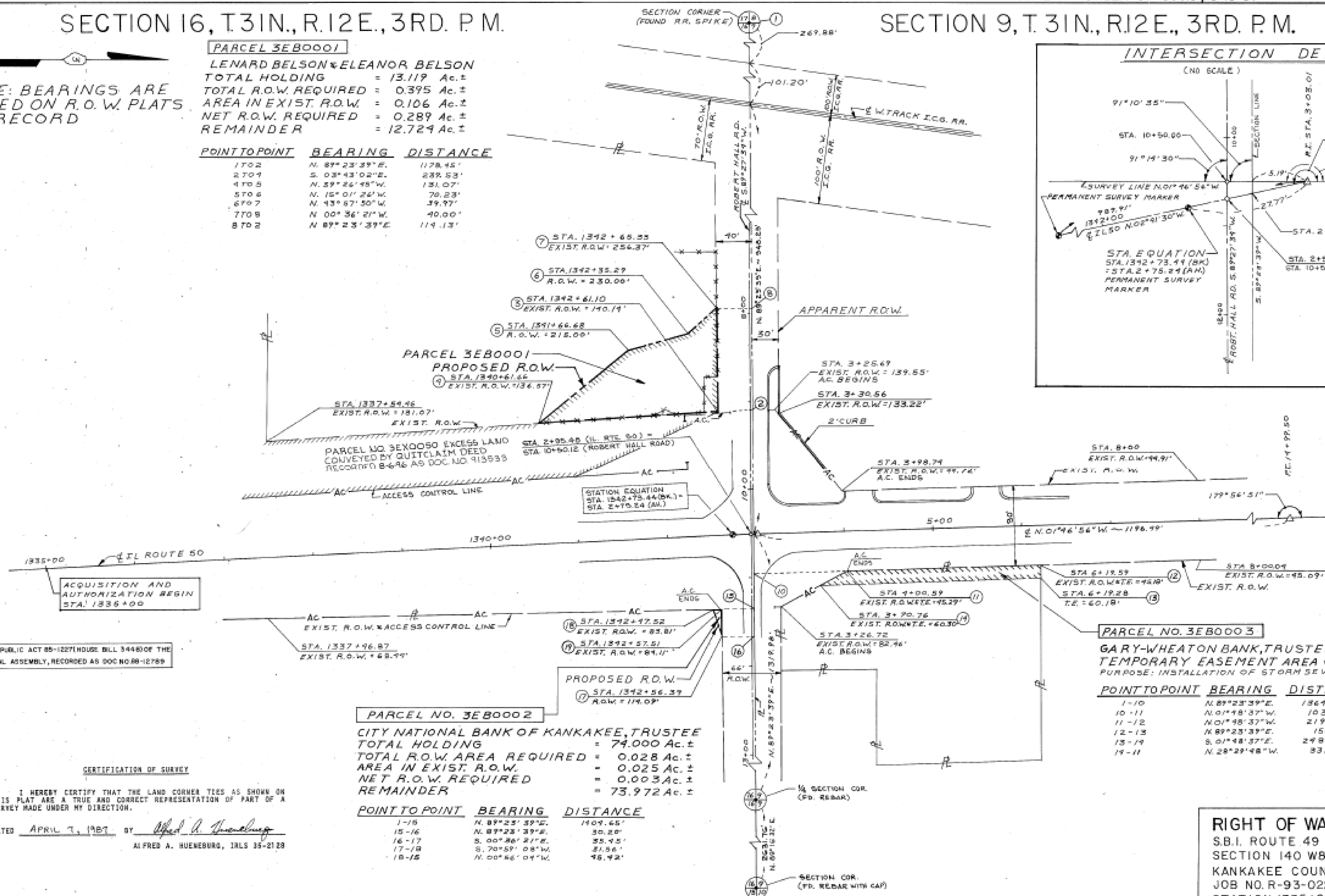
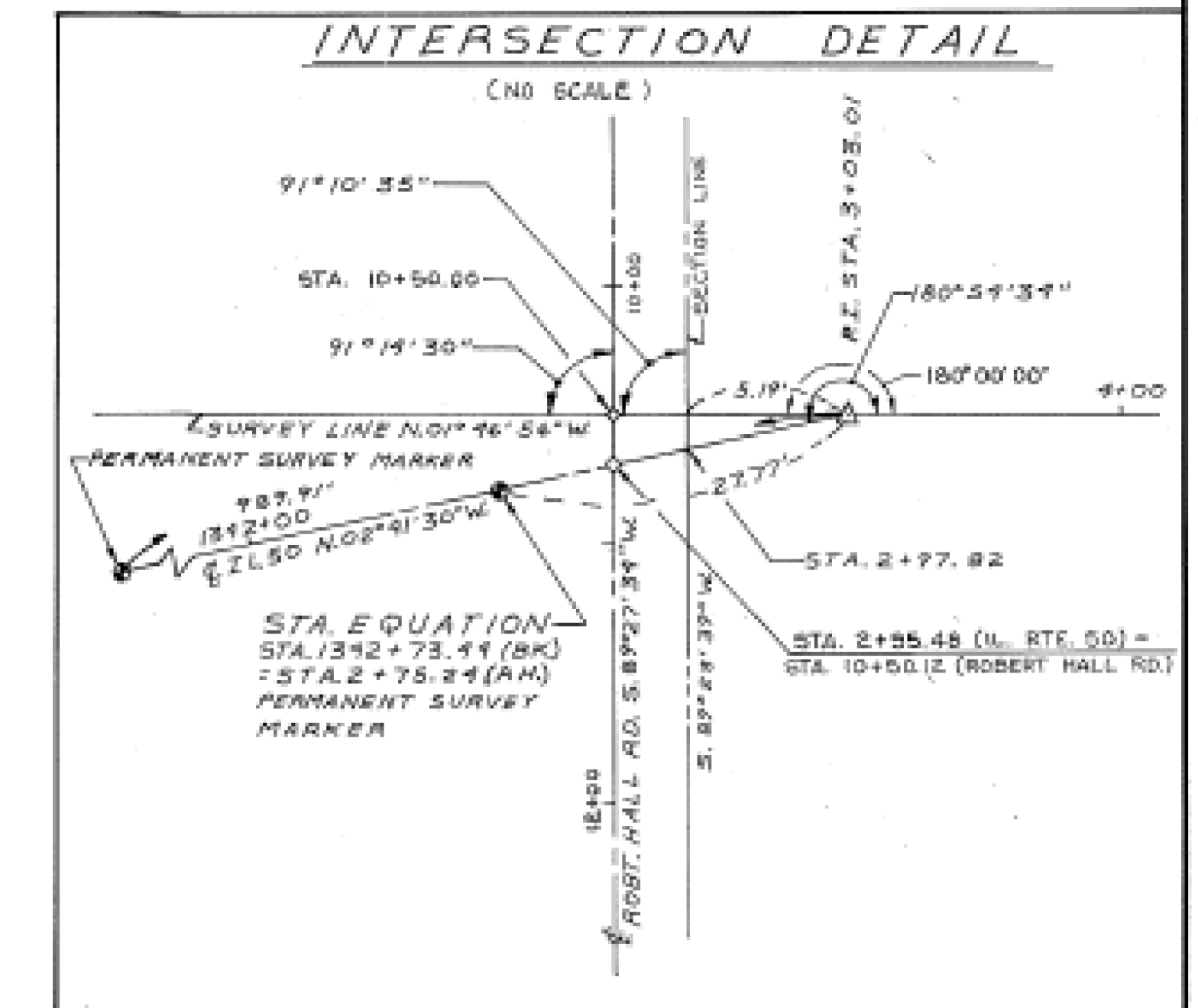
SECTION 9, T.31N., R.12E., 3RD. P.M.

NOTE: BEARINGS ARE BASED ON R.O.W. PLATS OF RECORD

PARCEL 3E80001

LENARD BELSON & ELEANOR BELSON
 TOTAL HOLDING = 13.119 Ac.±
 TOTAL R.O.W. REQUIRED = 0.395 Ac.±
 AREA IN EXIST. R.O.W. = 0.106 Ac.±
 NET R.O.W. REQUIRED = 0.289 Ac.±
 REMAINDER = 12.729 Ac.±

POINT TO POINT	BEARING	DISTANCE
1702	N. 89° 23' 39" E.	1178.45'
2701	S. 03° 43' 02" E.	282.53'
4705	N. 29° 26' 48" W.	131.07'
5706	N. 15° 01' 26" W.	70.23'
6707	N. 43° 57' 50" W.	39.97'
7708	N. 00° 36' 21" W.	40.00'
8702	N. 87° 23' 39" E.	119.13'



PARCEL NO. 3E80002
 CITY NATIONAL BANK OF KANKAKEE, TRUSTEE
 TOTAL HOLDING = 74.000 Ac.±
 TOTAL R.O.W. AREA REQUIRED = 0.028 Ac.±
 AREA IN EXIST. R.O.W. = 0.025 Ac.±
 NET R.O.W. REQUIRED = 0.003 Ac.±
 REMAINDER = 73.972 Ac.±

POINT TO POINT	BEARING	DISTANCE
1-15	N. 89° 23' 39" E.	1109.65'
15-16	N. 89° 23' 39" E.	50.20'
16-17	S. 00° 36' 21" E.	55.45'
17-18	S. 70° 59' 08" W.	31.56'
18-15	N. 00° 36' 01" W.	45.42'

PARCEL NO. 3E80003
 GARY WHEATON BANK, TRUSTEE
 TEMPORARY EASEMENT AREA = 0.080 Ac.±
 PURPOSE: INSTALLATION OF STORM SEWER

POINT TO POINT	BEARING	DISTANCE
1-10	N. 89° 23' 39" E.	1364.66'
10-11	N. 01° 48' 37" W.	103.70'
11-12	N. 01° 48' 37" W.	219.00'
12-13	N. 89° 23' 39" E.	15.00'
13-14	S. 01° 48' 37" E.	248.53'
14-11	N. 28° 29' 48" W.	83.40'

RELEASED BY PUBLIC ACT 85-1227 (HOUSE BILL 3448) OF THE 85TH GENERAL ASSEMBLY, RECORDED AS DOC. NO. 88-12789

CERTIFICATION OF SURVEY
 I HEREBY CERTIFY THAT THE LAND CORNER TIES AS SHOWN ON THIS PLAN ARE A TRUE AND CORRECT REPRESENTATION OF PART OF A SURVEY MADE UNDER MY DIRECTION.
 DATED APRIL 7, 1987 BY Alfred A. Hueneburg
 ALFRED A. HUENEBURG, IALS 35-2128

SECTION 16, T.31N., R.12E., 3RD. P.M.

SECTION 9, T.31N., R.12E., 3RD. P.M.

RIGHT OF WAY PLANS
 S.B.I. ROUTE 49 (IL 50)
 SECTION 140 W&RS-5
 KANKAKEE COUNTY
 JOB NO. R-93-022-86
 STATION 1335+00 TO 14+99.50
 SCALE 1"=50 FT. SHEET 2 OF 3