

STATE OF ILLINOIS
DEPARTMENT OF TRANSPORTATION
DIVISION OF HIGHWAYS

PROPOSED
HIGHWAY PLANS

FAP ROUTE 653 (IL 18)
SECTION (50-1HB)PATCHING

CLASS B PAVEMENT PATCHING
IL 18 AND I-39 INTERCHANGE
0.35 MI. WEST OF I-39 TO
0.39 MI. EAST OF I-39
LASALLE COUNTY

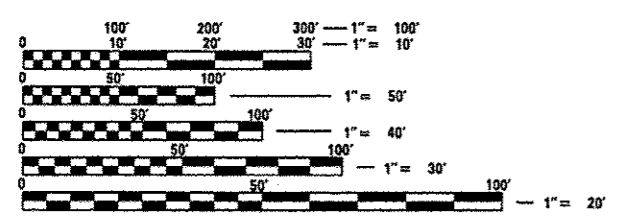
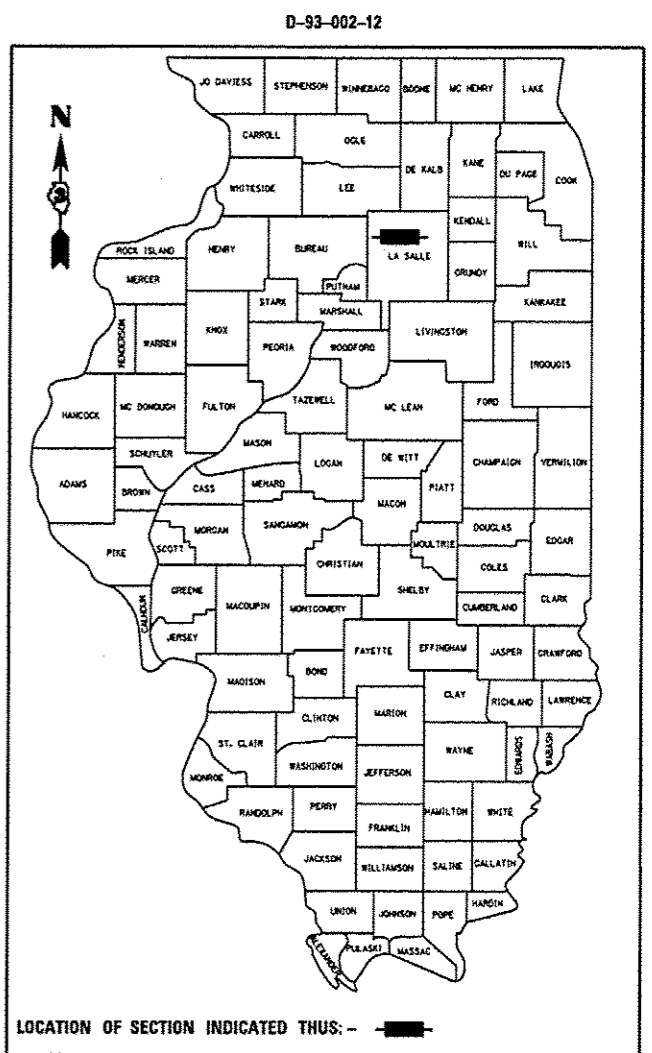
C-93-140-12

INDEX OF SHEETS

1. COVER SHEET
2. GENERAL NOTES
3. SUMMARY OF QUANTITIES
4. TYPICAL SECTIONS
- 5-7. SCHEDULES
8. TYPICAL PAVEMENT MARKINGS

STANDARDS

000001-06	STANDARD SYMBOLS, ABBREVIATIONS AND PATTERNS
001006	DECIMAL OF AN INCH AND OF A FOOT
442101-07	CLASS B PATCHES
442201-03	CLASS C AND D PATCHES
701006-03	OFF-ROAD OPERATIONS 2L, 2W, 15' (4.5 m) TO 24' (600 mm) FROM PAVEMENT EDGE
701201-04	LANE CLOSURE, 2L, 2W, DAY ONLY, FOR SPEEDS ≥ 45 MPH
701301-04	LANE CLOSURE, 2L, 2W, SHORT TIME OPERATIONS
701311-03	LANE CLOSURE, 2L, 2W, MOVING OPERATIONS - DAY ONLY
701901-02	TRAFFIC CONTROL DEVICES



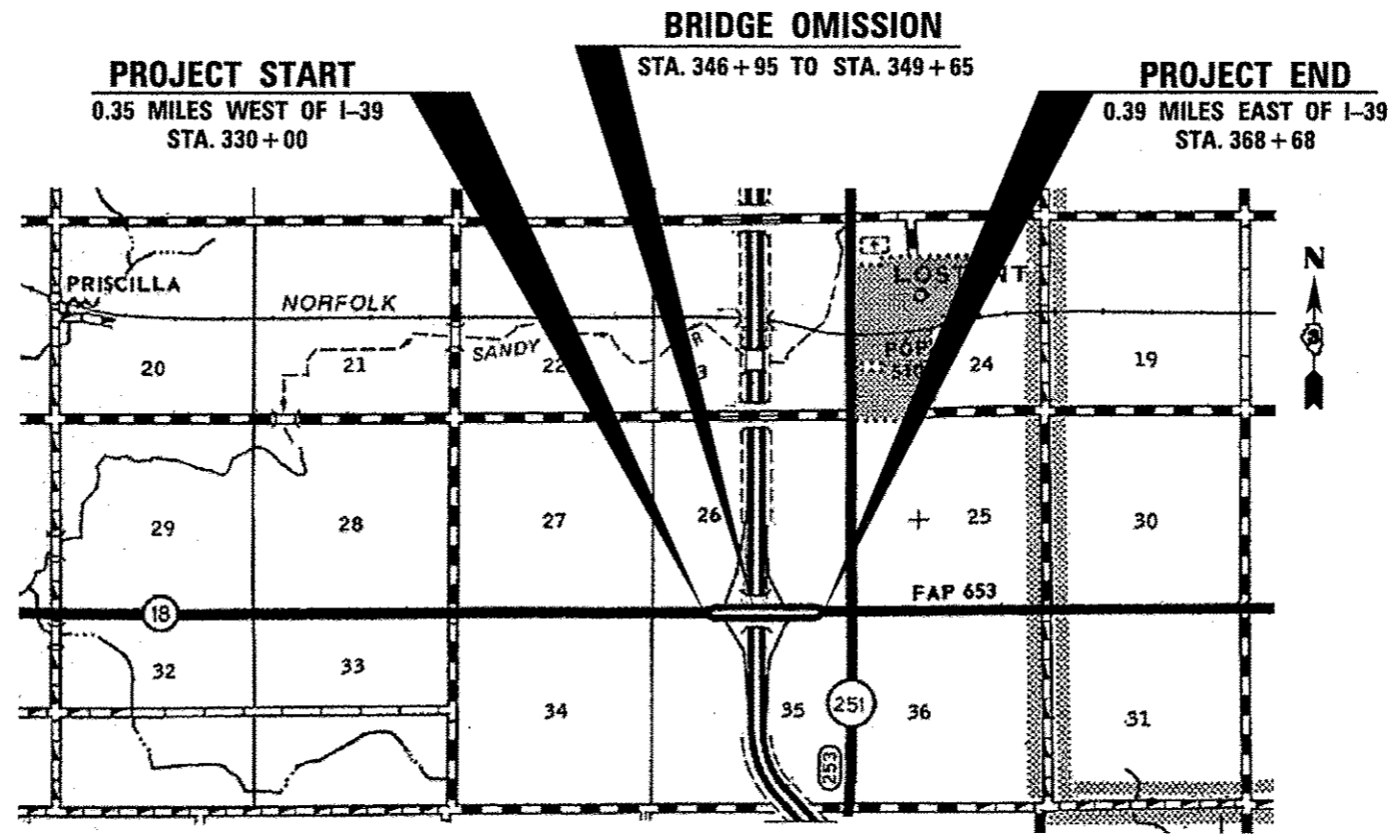
FULL SIZE PLANS HAVE BEEN PREPARED USING STANDARD ENGINEERING SCALES. REDUCED SIZED PLANS WILL NOT CONFORM TO STANDARD SCALES. IN MAKING MEASUREMENTS ON REDUCED PLANS, THE ABOVE SCALES MAY BE USED.

J.U.L.I.E.
 JOINT UTILITY LOCATION INFORMATION FOR EXCAVATION
 1-800-892-0123
 OR 811

DISTRICT 3 NO. 815/4346131

PROJECT ENGINEER JOE KANNEL P.E.
UNIT CHIEF RON WOODSHANK
TOWNSHIP HOPE

CONTRACT NO. 66C41



GROSS LENGTH = 3,907 FT. = 0.74 MILE
 NET LENGTH = 673 FT. = 0.127 MILE

RURAL	
INTERSTATE	
FAP 653 (IL 18)	
2011	
ADT	3450
P.V.	83.91%
S.U.	7.39%
M.U.	8.70%

STATE OF ILLINOIS
 DEPARTMENT OF TRANSPORTATION
 DIVISION OF HIGHWAYS

SUBMITTED 8-27-2012

[Signature]
 DEPUTY DIRECTOR OF HIGHWAYS, REGION ENGINEER

October 5, 2012
John D. Bavamelli P.E.
 acting ENGINEER OF DESIGN AND ENVIRONMENT

October 5, 2012
William R. Frey
 acting DIRECTOR OF HIGHWAYS, CHIEF ENGINEER

PRINTED BY THE AUTHORITY
OF THE STATE OF ILLINOIS