

STATE OF ILLINOIS
DEPARTMENT OF TRANSPORTATION
DIVISION OF HIGHWAYS

PROPOSED
HIGHWAY PLANS

FAP ROUTE 330 (IL 17)
SECTION (1R-B)I-4

STRUCTURE NO'S 046-0039 (EB) & 046-0040 (WB)
CARRYING FAP ROUTE 330 (IL 17)
OVER THE KANKAKEE RIVER
4.4 MILES EAST OF KANKAKEE
KANKAKEE COUNTY

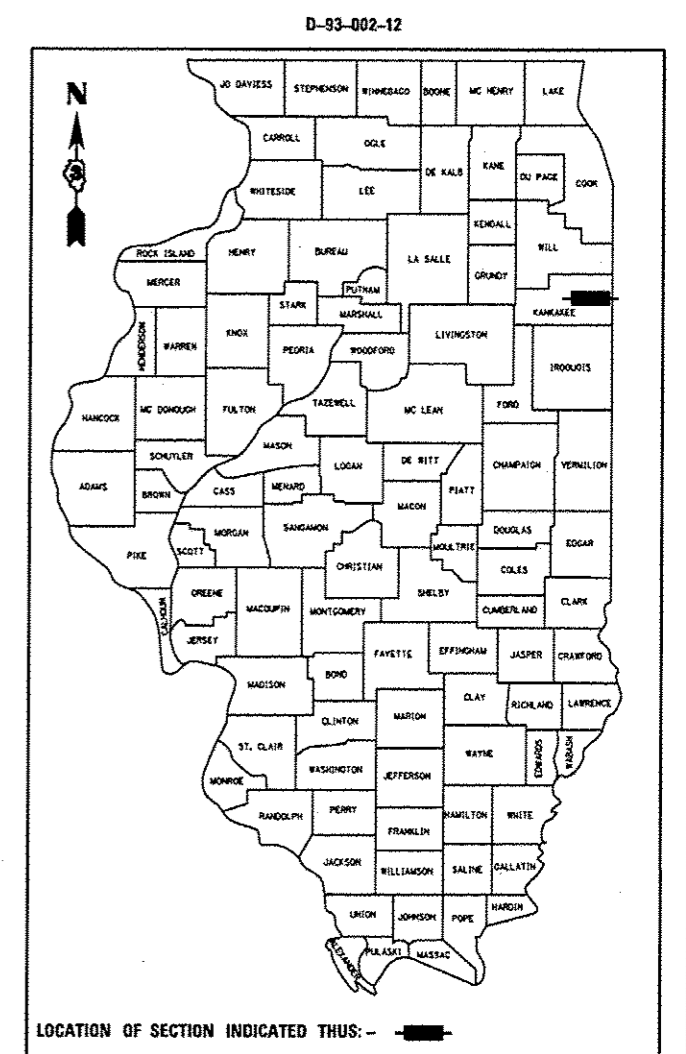
C-93-146-12

INDEX OF SHEETS

1. COVER SHEET
2. GENERAL NOTES
3. SUMMARY OF QUANTITIES
4. TYPICAL SECTIONS
- 5-7. STRUCTURE DETAILS

STANDARDS

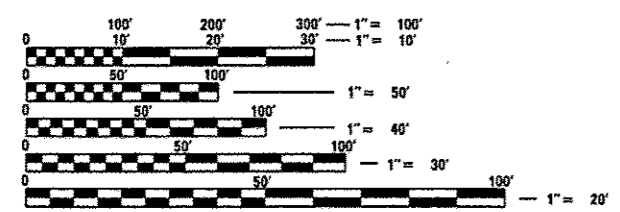
- | | |
|-----------|---|
| 000001-06 | STANDARD SYMBOLS, ABBREVIATIONS AND PATTERNS |
| 001006 | DECIMAL OF AN INCH AND OF A FOOT |
| 202001-01 | EARTH MEDIAN DITCH CHECK |
| 701101-02 | OFF-ROAD OPERATIONS MULTILANE, 15' (4.5 m) TO 24' (600 mm) FROM PAVEMENT EDGE |
| 701421-04 | LANE CLOSURE, MULTILANE, DAY OPERATIONS ONLY, FOR SPEEDS ≥ 45 MPH TO 55 MPH |
| 701901-02 | TRAFFIC CONTROL DEVICES |



PROJECT LOCATION

STRUCTURE NO. 046-0039 (EB)
STA. 226 + 30.44 TO STA. 229 + 71.96

STRUCTURE NO. 046-0040 (WB)
STA. 226 + 49.94 TO STA. 229 + 91.46



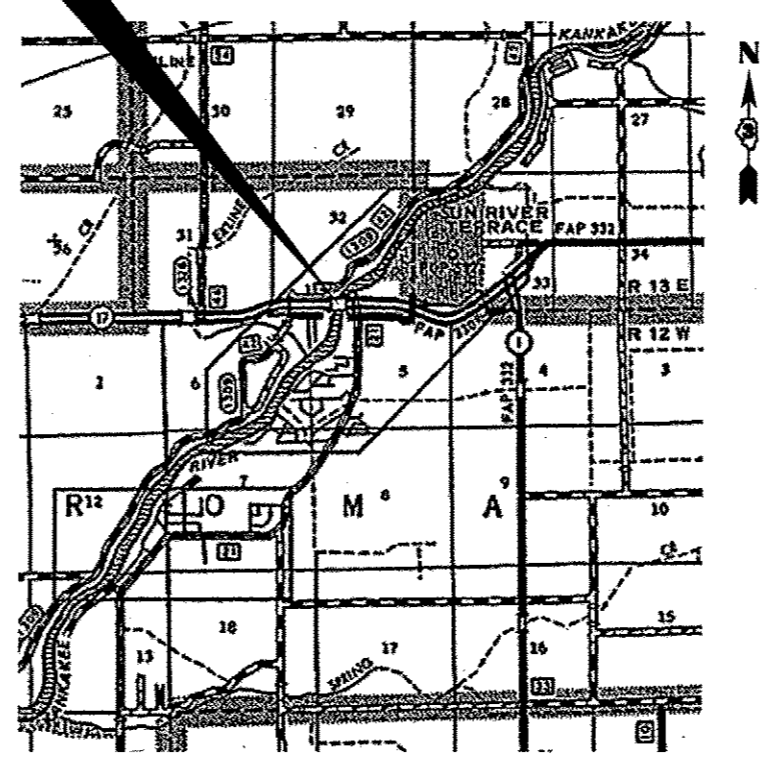
FULL SIZE PLANS HAVE BEEN PREPARED USING STANDARD ENGINEERING SCALES. REDUCED SIZED PLANS WILL NOT CONFORM TO STANDARD SCALES. IN MAKING MEASUREMENTS ON REDUCED PLANS, THE ABOVE SCALES MAY BE USED.

J.U.L.I.E.
 JOINT UTILITY LOCATION INFORMATION FOR EXCAVATION
 1-800-892-0123
 OR 811

DISTRICT 3 NO. (815) 434-6131

PROJECT ENGINEER: JOE KANNEL P.E.
 UNIT CHIEF: RON WOODSHANK
 TOWNSHIP: AROMA

CONTRACT NO. 66C46



PPOINT LOCATION

RURAL	
OPA	
FAP 330 (IL 17)	
2011	
ADT	10700
P.V.	84.58%
S.U.	6.54%
M.U.	8.88%

STATE OF ILLINOIS
 DEPARTMENT OF TRANSPORTATION
 DIVISION OF HIGHWAYS

SUBMITTED 8-27-2012

[Signature]
 DEPUTY DIRECTOR OF HIGHWAYS, REGION ENGINEER

October 5 2012
John D. Baranzelli P.E./a
 acting ENGINEER OF DESIGN AND ENVIRONMENT

October 5 2012
William R. Frey/ea
 acting DIRECTOR OF HIGHWAYS, CHIEF ENGINEER

PRINTED BY THE AUTHORITY
OF THE STATE OF ILLINOIS