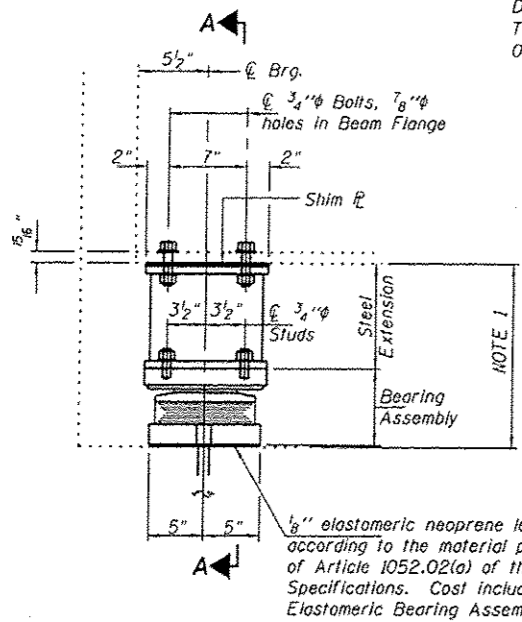
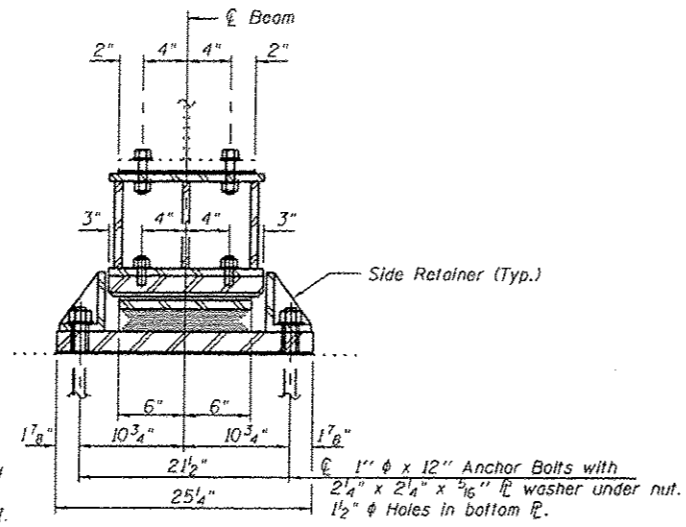


NOTE 1:  
DIMENSIONS TAKEN FROM ACTUAL FIELD MEASUREMENTS.  
THE CONTRACTOR SHALL VERIFY MEASUREMENTS PRIOR TO  
ORDERING MATERIALS FOR THE BEARING EXTENSIONS.



ELEVATION AT ABUTMENT

TYPE II TFE ELASTOMERIC EXP. BRG.

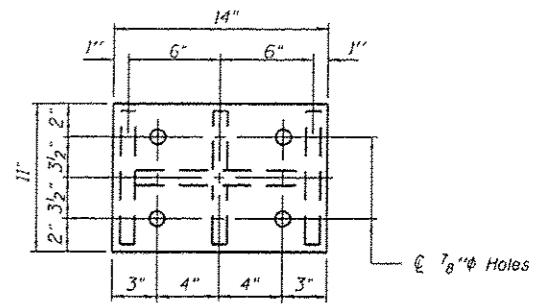


SECTION A-A

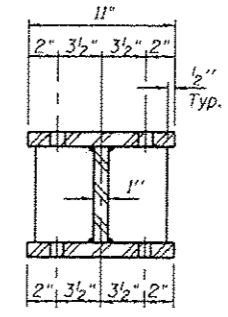
Notes:  
Diaphragm removal and reinstallation may be required to facilitate drilling holes. Cost included with Furnishing and Erecting Structural Steel.  
New steel extensions, shim plates and connection bolts are included with Furnishing and Erecting Structural Steel.  
The Organic Zinc Rich Primer / Epoxy / Urethane Paint System shall be used for painting of new structural steel except where otherwise noted. The entire system shall be shop applied, with the exception, damaged areas shall be touched up in the field. The color of the final finish coat for all interior steel surfaces shall be Gray, Munsell No. 5B 7/1. The color of the final finish coat for all steel surfaces of the exterior fascia beams shall be Green, Munsell No. 7.5G 4/8. Cost shall be included in the unit bid price for "Furnishing and Erecting Structural Steel" or the unit bid price for Elastomeric Bearing Assembly, Type II".  
Prior to ordering any material, the Contractor shall verify in the field all bearing height and shim thickness dimensions. Min. jack capacity = 42 Tons.  
Anchor bolts shall be ASTM F1554 all-thread for an Engineer-approved alternate material of the grade(s) and diameter(s) specified. ASTM A307 Grade C anchor bolts may be used in lieu of ASTM F1554 Grade 36 (Fy=36ksi). The corresponding specified grade of AASHTO M314 anchor bolts may be used in lieu of ASTM F1554.  
Anchor bolts of fixed bearings may be either cast in place or installed in holes drilled after the supported member is in place.  
Anchor bolts for Type II bearings shall be placed in holes drilled through the bottom bearing plate after members are in place. Side retainers shall be placed after bolts are installed.  
Drilled and set anchor bolts shall be installed according to Article 521.06 of the Standard Specifications.  
Side retainers shall be included in the cost of Elastomeric Bearing Assembly, Type II.  
The 1/8" PTFE sheet shall be bonded directly to the top steel plate with a two-component, medium viscosity epoxy resin, conforming to the requirements of the Federal Specification MMM-A-134, Type I. The bond agent shall be applied on the full area of the contact surfaces.  
Bonding of 1/8" PTFE sheet during vulcanizing process will be permitted provided the process and method of adjusting assembly height is approved by the Engineer.

BEAM REACTIONS

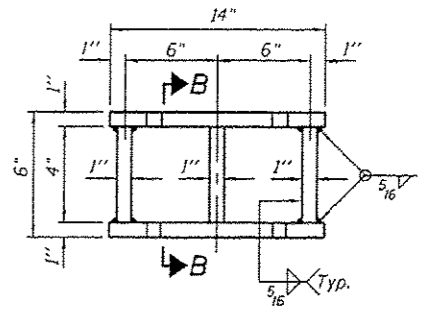
R <sub>l</sub>	(K)	32.6 kips
R <sub>t</sub>	(K)	35.8 kips
Imp.	(K)	9.0 kips
R (Total)	(K)	77.4 kips



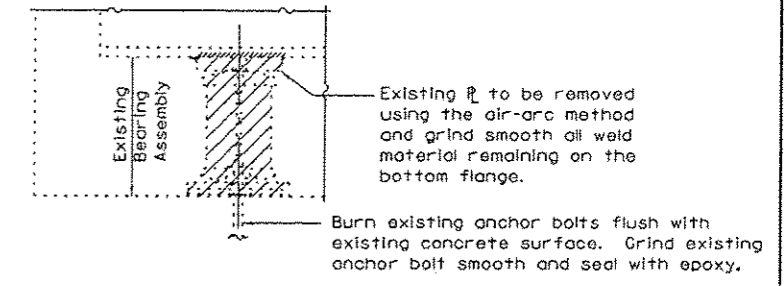
PLAN TOP AND BOTTOM PLATE



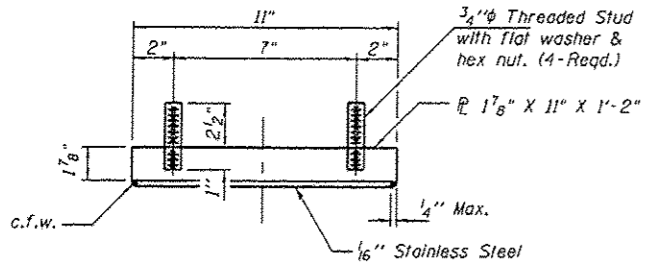
SECTION B-B



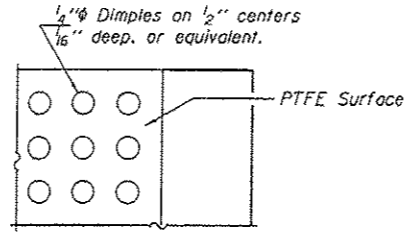
STEEL EXTENSION DETAIL



EXISTING BEARING REMOVAL DETAIL



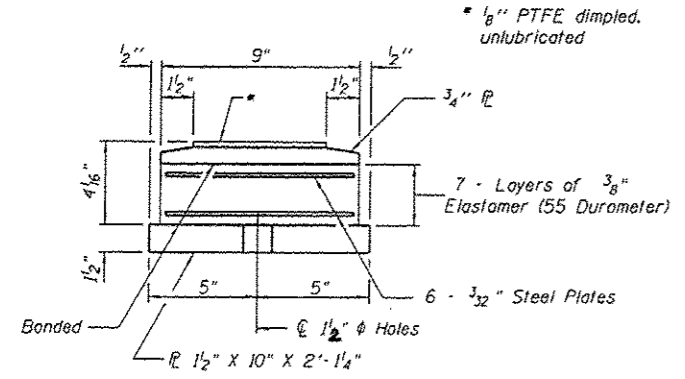
TOP BEARING ASSEMBLY



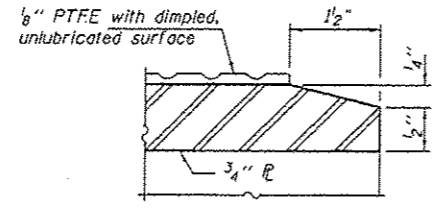
PLAN-PTFE SURFACE

SHIM "4" DIMENSIONS						
STRUCTURE NO. 046-0039 (EB)						
BEAM NO.	1	2	3	4	5	6
W. ABUTMENT	1/8"	1/2"	1/4"	3/8"	3/4"	1/2"
E. ABUTMENT	3/8"	5/8"	1/2"	0"	3/8"	3/4"

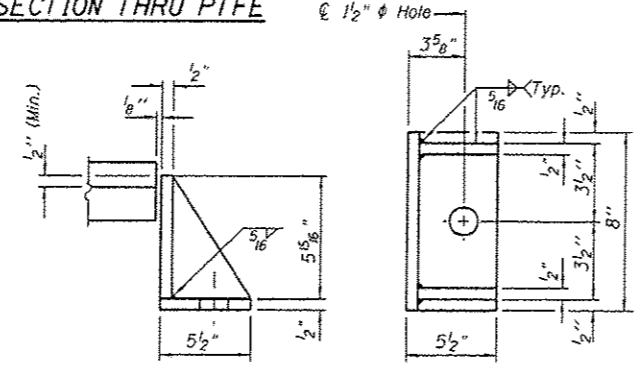
SHIM "4" DIMENSIONS						
STRUCTURE NO. 046-0040 (WB)						
BEAM NO.	1	2	3	4	5	6
W. ABUTMENT	1/2"	3/8"	1/2"	1/2"	3/4"	3/4"
E. ABUTMENT	1/4"	1/2"	0"	1/8"	3/8"	1/2"



BOTTOM BEARING ASSEMBLY

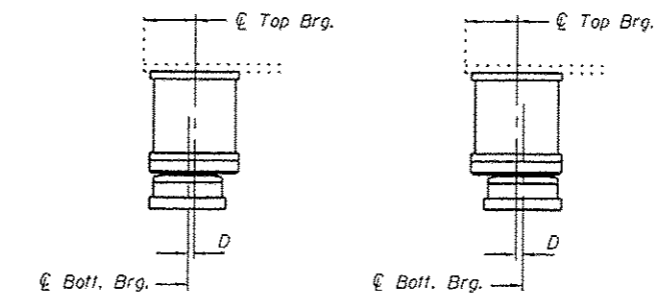


SECTION THRU PTFE



SIDE RETAINER

Equivalent rolled angle with stiffeners will be allowed in lieu of welded plates.



BELOW 50° F. (Move bott. brg. away from fixed brg.) ABOVE 50° F. (Move bott. brg. toward fixed brg.)

SETTING ANCHOR BOLTS AT EXP. BRG.

D = 1/8" per each 100' of expansion for every 15° temp. change from the normal temp. of 50°F.

BILL OF MATERIAL

Item	Unit	Total
Elastomeric Bearing Assembly, Type II	Each	24
Jack and Remove Existing Bearings	Each	24
Furnishing and Erecting Structural Steel	Pound	3235
Anchor Bolts 1" φ	Each	48

TYII/REPS 12-03-2008