



LEGEND

- R.O.W. MARKER FOUND
- SET 5/8" IRON PIN W/ CAP
- - - - - EXISTING R.O.W. AND A/C LINE
- - - - - EXISTING CENTERLINE
- - - - - SECTION LINE
- - - - - PROPOSED R.O.W. AND RELOCATED A/C LINE
- - - - - PROPOSED TEMPORARY EASEMENT LINE
- - - - - EXISTING UTILITY EASEMENT LINE
- () RECORD DATA

☉ CURVE DATA
 CURVE 74E2
 P.I. STA. 576+92.67
 $\Delta = 13^{\circ}36'59"$ (RT)
 $D = 00^{\circ}28'00"$
 $T = 1,465.80'$
 $R = 12,277.67'$
 $L = 2,917.79'$
 P.C. STA. 562+26.87
 P.T. STA. 591+44.66

4BDC017
 E. LOUISE STEINER TRUSTEE
 CHERYL HAUTER TRUSTEE
 NATIONAL CITY BANK TRUSTEE
 IVAN L. STEINER TRUSTEE
 MELANIE S. CEYER TRUSTEE
 JEFFERY L. STEINER TRUSTEE
 NANCY S. STEINER TRUSTEE

4BDC018
 GLEN A. BERRY, JR.
 TAMARA SUE FULTON

4BDC021
 BERRY PROPERTIES, INC.

4BDC019 & TE
 HEARTLAND BANK AND TRUST AS TRUSTEE

4BDC020 & TE
 SOUTH SIDE TRUST & SAVINGS BANK OF PEORIA, AS TRUSTEE

4BDC022 & TE
 TRUSTEE OF THE TRUSTS
 CREATED UNDER THE LAST WILL
 AND TESTAMENT OF ANTHONY T. LAHOOD

4BDC027 & TE
 CHICAGO TRUST COMPANY, AS
 SUCCESSOR TO THE WAYNE HAMMER
 TRUST COMPANY

4BDC023
 KROGER LIMITED PARTNERSHIP I

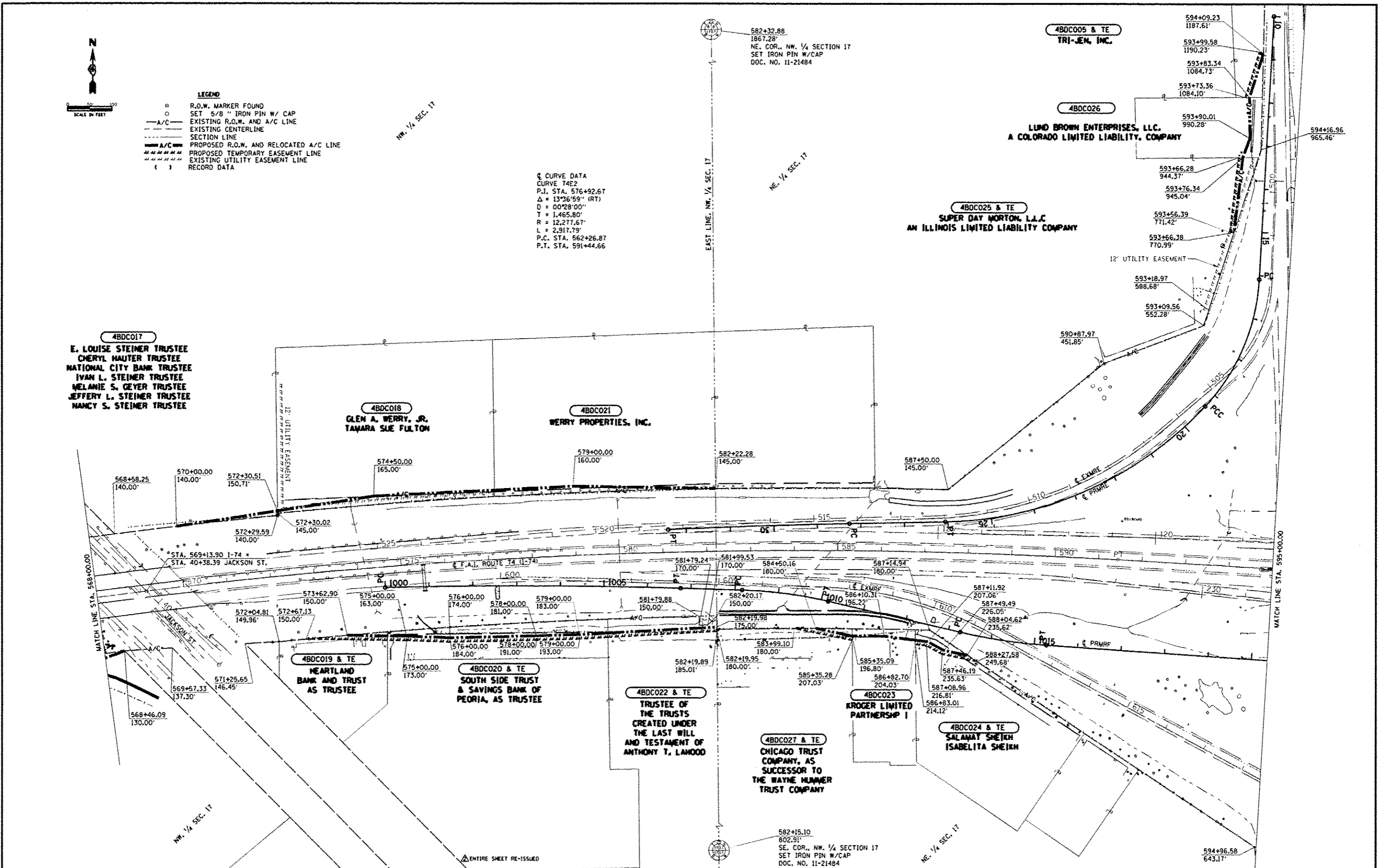
4BDC024 & TE
 SALAMAT SHEIKH
 ISABELITA SHEIKH

4BDC005 & TE
 TRI-JEM, INC.

4BDC026

LIND BROWN ENTERPRISES, LLC.
 A COLORADO LIMITED LIABILITY COMPANY

4BDC025 & TE
 SUPER DAY MORTON, L.L.C.
 AN ILLINOIS LIMITED LIABILITY COMPANY



FILE NAME ...RDWPLANS.dgn	USER NAME	DESIGNED	REVISED	STATE OF ILLINOIS DEPARTMENT OF TRANSPORTATION	RIGHT OF WAY PLANS		F.A.I. RTE.	SECTION	COUNTY	TOTAL SHEETS	SHEET NO.	
	PLT SCALE	DRAWN	REVISED				74	90-(14R)(14B-4,14,14HV)(18R)	TAZEWELL	2433	1468	
	PLT DATE	CHECKED	REVISED		PROJECT		JOB NO.	CONTRACT NO. 68620				
		DATE	REVISED		SHEET NO. 5 OF 8 SHEETS		STA. 568+00.00 TO STA. 595+00.00	ILLINOIS FED. AID PROJECT				