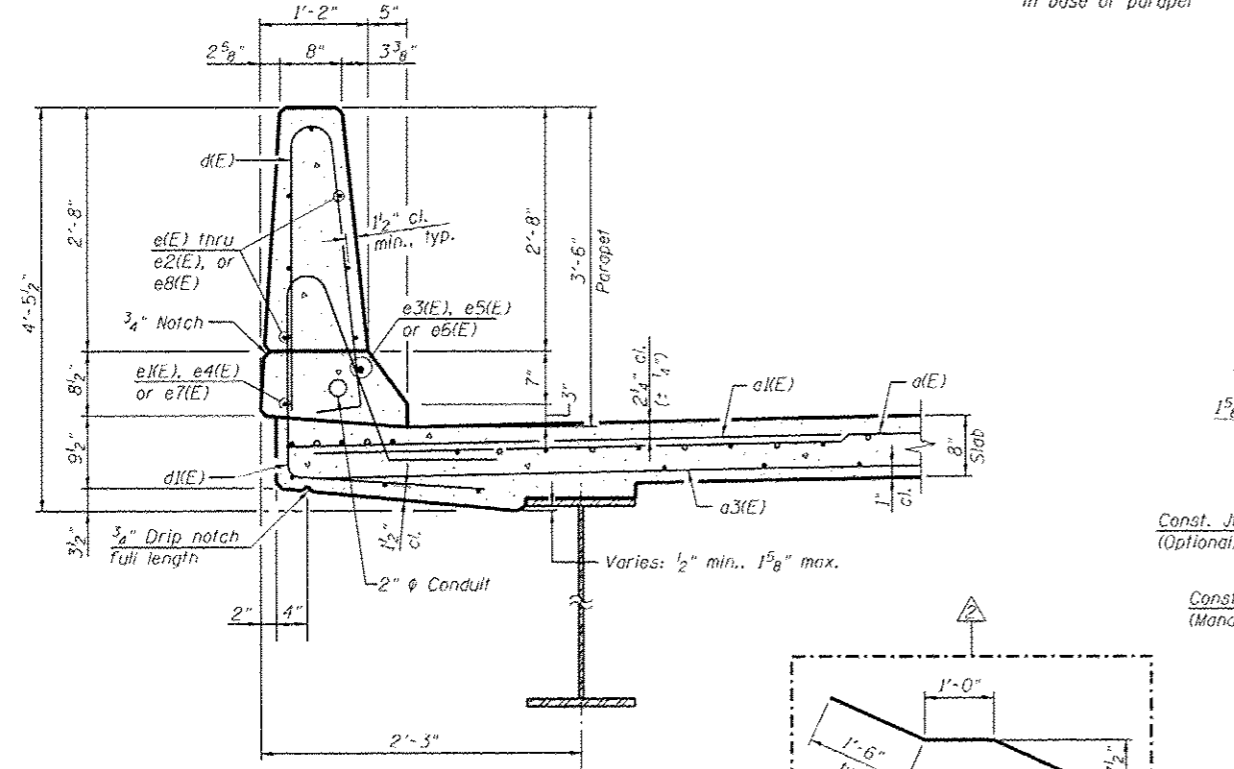
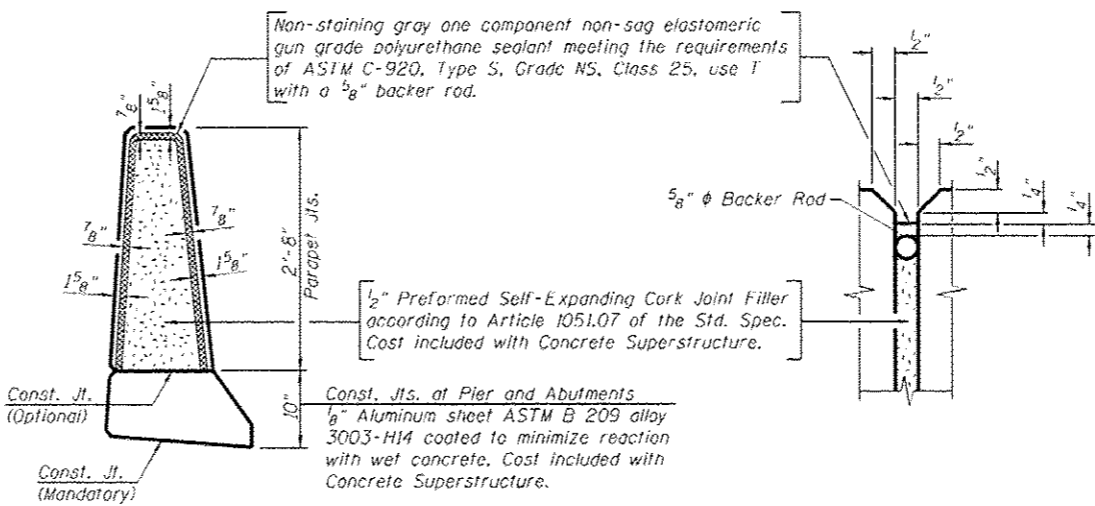


**INSIDE ELEVATION OF PARAPET**  
(4 Thus)

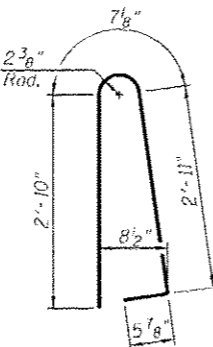
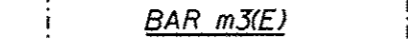


**SECTION THRU PARAPET**

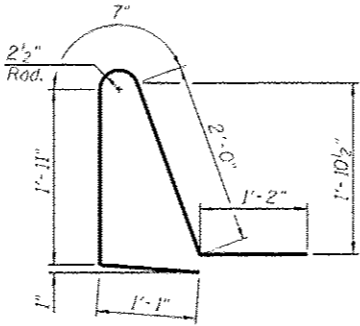


**PARAPET JOINT DETAILS**

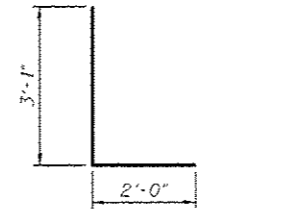
**MINIMUM BAR LAP**  
(Parapet)  
#4 bar = 2'-0"  
#8 bar = 5'-2"



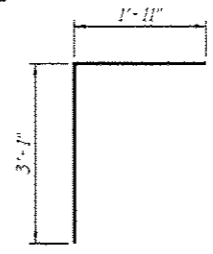
**BAR d(E)**



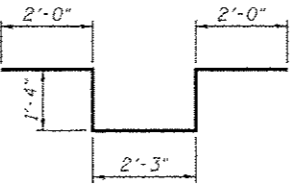
**BAR d1(E)**



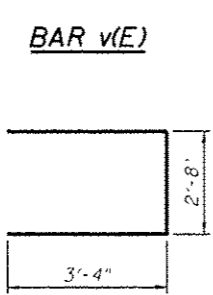
**BAR d2(E)**



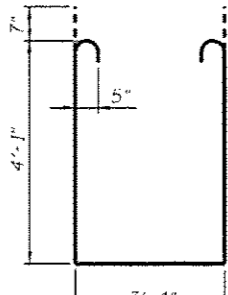
**BAR v(E)**



**BAR d3(E)**



**BAR s(E)**



**BAR s1(E)**

**SUPERSTRUCTURE BILL OF MATERIAL (TWO DECKS)**

Bar	No.	Size	Length	Shape
a(E)	1002	#5	33'-6"	—
a1(E)	2004	#6	6'-6"	—
a2(E)	8	#6	36'-6"	—
a3(E)	614	#5	33'-0"	—
b(E)	592	#5	31'-6"	—
b1(E)	210	#6	25'-9"	—
b2(E)	540	#5	28'-6"	—
c(E)	1004	#5	6'-10"	⌋
c1(E)	1004	#5	6'-9"	⌋
c2(E)	6	#6	5'-1"	⌋
c3(E)	12	#6	8'-11"	⌋
e(E)	168	#4	16'-6"	—
e1(E)	64	#4	18'-8"	—
e2(E)	112	#4	17'-8"	—
e3(E)	16	#8	29'-3"	—
e4(E)	16	#4	27'-0"	—
e5(E)	8	#8	18'-8"	—
e6(E)	16	#8	26'-6"	—
e7(E)	16	#4	24'-0"	—
e8(E)	28	#4	17'-11"	—
m(C)	16	#6	36'-11"	—
m1(E)	48	#6	7'-9"	—
m2(E)	24	#6	2'-2"	—
m3(E)	180	#5	4'-0"	—
s(E)	152	#5	9'-4"	⌋
s1(E)	120	#5	12'-8"	⌋
v(E)	140	#5	5'-0"	⌋
Concrete Superstructure	Cu. Yd.		595.7	
Reinforcement Bars, Epoxy Coated	Pound		1146,840	

Bars indicated thus 1x4-#4 etc. indicate 1 lines of bars with 4 lengths per line.

**benesch**  
engineers · scientists · planners  
Alfred Benesch & Company  
205 North Michigan Avenue, Suite 2400  
Chicago, Illinois 60601  
312-565-0450 Job No. 10056

FILE NAME 090165.68620.14_dk12.dgn	USER NAME msbecker	DESIGNED - MFB	REVISIONS 10/23/2012 MFB
PL01 SCALE	CHECKED - MRB	DRAWN - PRT	
PL01 DATE 10/22/2012	CHECKED - MRB		

**STATE OF ILLINOIS DEPARTMENT OF TRANSPORTATION**

**SUPERSTRUCTURE DETAILS 2 OF 2**  
STRUCTURE NO. 090-0165 / 0166  
SHEET NO. SA14 OF SA47 SHEETS

F.A.I. RITE	SECTION	COUNTY	TOTAL SHEETS	SHEET NO.
74	90-(14R)(14MB-4,14,14HVB)BR	TAZEWELL	2435	1878
CONTRACT NO. 68620			ILLINOIS FED. AID PROJECT	

x:\12000s\10056\engineer\ing\_documents\_phase\_11\1155cover\_174\inl\090165\_68620.14\_dk12.dgn 3:30:01 PM 10/22/2012