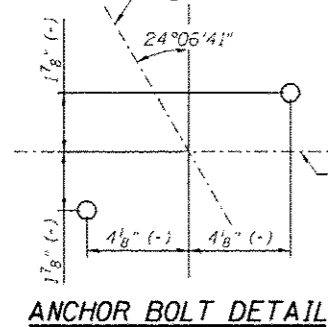


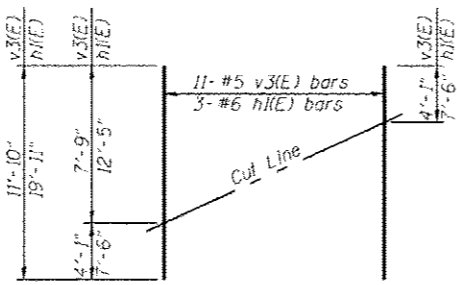
BILL OF MATERIAL

Bar No.	Size	Length	Shape
n1(E)	#6	12'-5"	
n1(E)	#6	19'-11"	
n2(E)	#5	10'-2"	
p1(E)	#7	36'-11"	
p1(E)	#5	20'-1"	
s2(E)	#5	13'-3"	
s3(E)	#5	13'-11"	
s4(E)	#5	4'-4"	
s5(E)	#5	4'-8"	
u1(E)	#6	10'-10"	
u1(E)	#5	9'-2"	
v1(E)	#8	6'-6"	
v2(E)	#8	7'-7"	
v3(E)	#5	11'-10"	
Concrete Structures	Cu. Yd.	21.4	
Reinforcement Bars, Epoxy Coated	Pound	4,390	
Furnishing Steel Piles HP12X53	Foot	623	
Driving Piles	Foot	623	



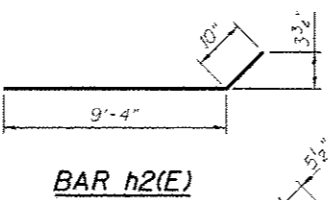
PILE DATA
 Type: HP12x53
 Nominal Required Bearing: 350 kips
 Factored Resistance Available: 192 kips
 Est. Length: 89 ft.
 No. Production Piles: 7
 No. Test Piles: 0

MIN BAR LAP
 #5 bar = 3'-3"

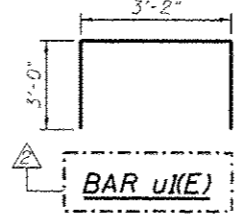


FIELD CUTTING DIAGRAM

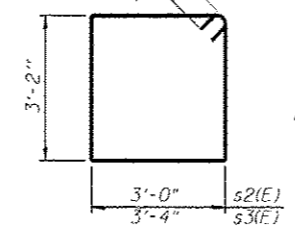
Order v3(E) & n1(E) full length. Cut as shown and use remainder of bars in opposite face.



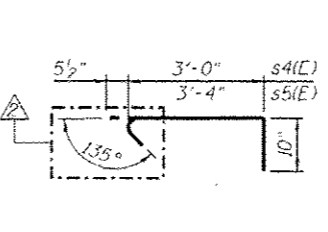
BAR n2(E)



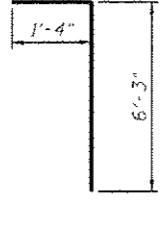
BAR u1(E)



BARS s2(E) & s3(E)



BARS s4(E) & s5(E)



BAR v2(E)

NOTES:

- For details of piles, see sheet SA30.
- Pour steps monolithically with cap.
- Flare u1(E) bars between the s2(E) bar and the s3(E) bar.
- h1(E) or h2(E) bars shall not be embedded in the approach slab.
- Adjust bar spacing to avoid anchor bolt locations.

benesch
 engineers - scientists - planners
 Alfred Benesch & Company
 205 North Michigan Avenue, Suite 2400
 Chicago, Illinois 60601
 312-565-0450 Job No. 10056

FILE NAME	USER NAME	DESIGNED	REVISED
0900165_68620_24_abut1.dgn	nbecke	DTS	10/23/2012 MFB
		CHECKED	REVISED
		SLD	
		DRAWN	REVISED
		PRT	
		CHECKED	REVISED
		SLD	

STATE OF ILLINOIS
DEPARTMENT OF TRANSPORTATION

NB NORTH ABUTMENT DETAILS
STRUCTURE NO. 090-0165 / 0166
 SHEET NO. SA24 OF SA47 SHEETS

F.A.I. RTE.	SECTION	COUNTY	TOTAL SHEETS	SHEET NO.
74	90-114R(14HB-4.14,14HB)BR	TAZEWELL	2433	1888
			CONTRACT NO. 68620	

x:\102008\102056\engineering\documents\phase-11\1155over\74\1155over\0900165_68620_24_abut1.dgn 3/30/05 PM 10/22/2012