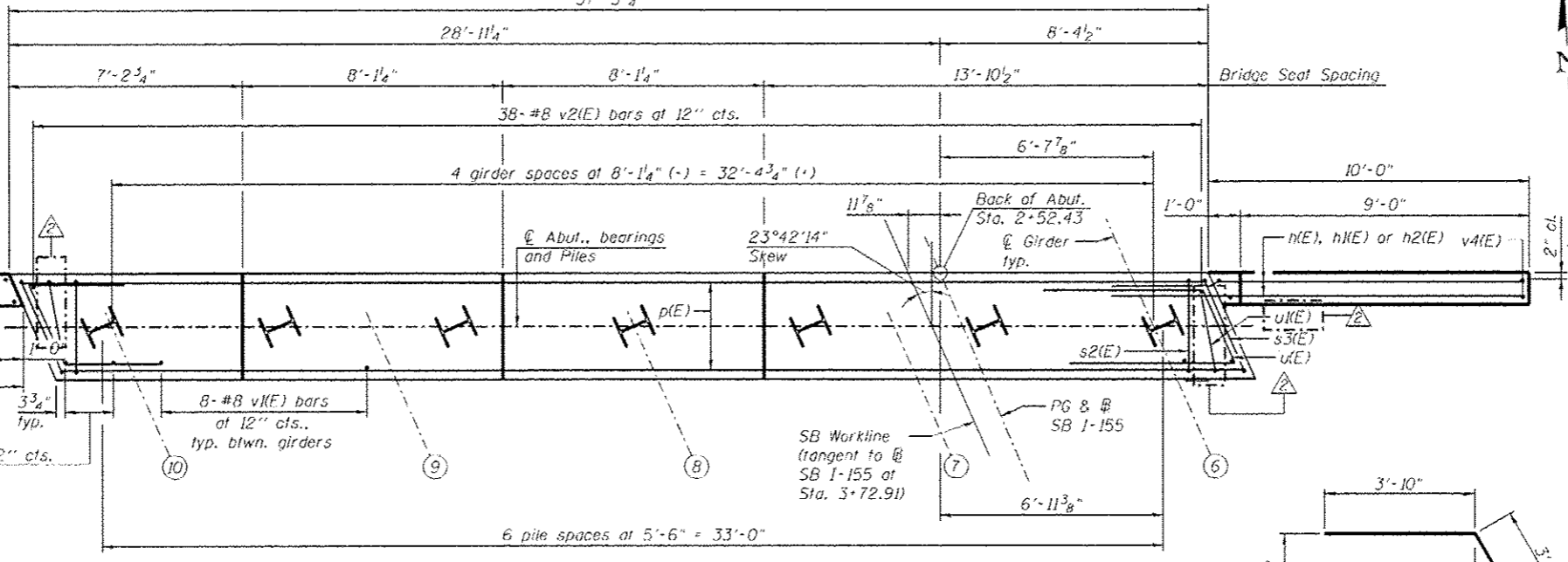


**SEC. THRU ABUT.**  
**BILL OF MATERIAL**

Bar	No.	Size	Length	Shape
h1(E)	42	#6	12'-5"	
h2(E)	6	#6	19'-11"	
h2(E)	4	#5	10'-2"	
p1(E)	8	#7	36'-11"	
p1(E)	8	#5	20'-1"	
p2(E)	4	#5	21'-8"	
s2(E)	32	#5	13'-3"	
s3(E)	2	#5	13'-11"	
s4(E)	64	#5	4'-4"	
s5(E)	8	#5	4'-8"	
s6(E)	23	#5	6'-10"	
u1(E)	8	#6	10'-10"	
u1(E)	2	#5	9'-2"	
v1(E)	38	#8	6'-6"	
v2(E)	38	#8	7'-7"	
v3(E)	11	#5	11'-10"	
v4(E)	11	#5	13'-0"	
Concrete Structures	Cu. Yd.		22.7	
Reinforcement Bars	Pound		4,700	
Epoxy Coated				
Furnishing Steel Piles	Foot		534	
Driving Piles	Foot		534	
Test Pile Steel	Each		1	
HP12x53				

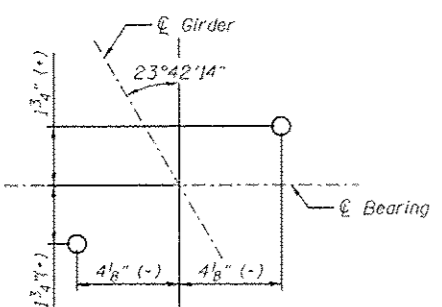
Bars indicated thus 4x2-#5 etc. indicates 4 lines of bars with 2 lengths per line.

- NOTES:**
- For details of piles, see sheet SA30.
  - Pour steps monolithically with cap.
  - Flare v1(E) bars between the s2(E) bar and the s3(E) bar.
  - h1(E) or h2(E) bars shall not be embedded in the approach slab.
  - Adjust bar spacing to avoid anchor bolt locations.



**PLAN**

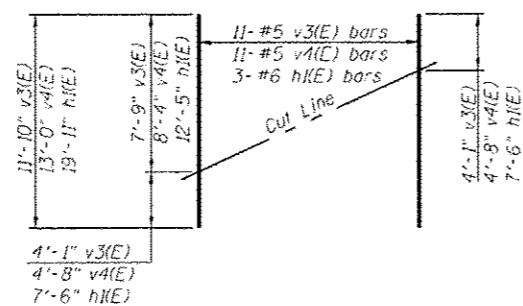
**MIN. BAR LAP**  
#5 bar = 3'-3"



**ANCHOR BOLT DETAIL**

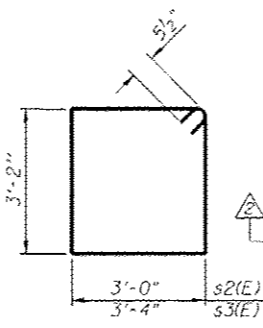
**PILE DATA**

Type: HP12x53  
Nominal Required Bearing: 350 kips  
Factored Resistance Available: 192 kips  
Est. Length: 89 ft.  
No. Production Piles: 6  
No. Test Piles: 1

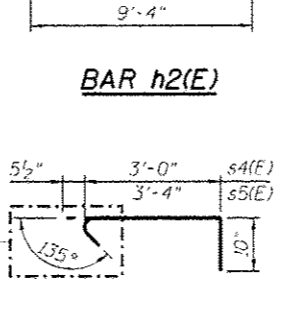


**FIELD CUTTING DIAGRAM**

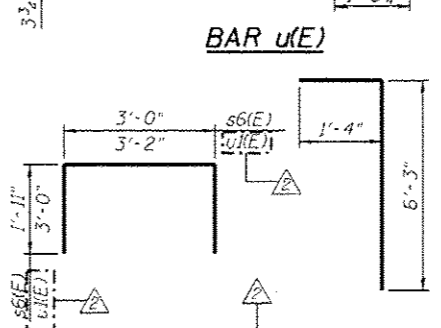
Order v3(E), v4(E) and h1(E) full length. Cut as shown and use remainder of bars in opposite face.



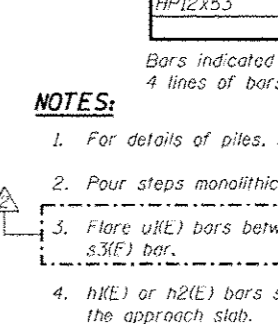
**BARS s2(E) & s3(E)**



**BARS s4(E) & s5(E)**



**BARS s6(E) & u1(E)**



**BAR v2(E)**



FILE NAME	USER NAME	DESIGNED	REVISED
0900165_68620_25_abut2.dgn	msbecker	DTS	10/23/2012 MFB
		CHECKED	REVISED
		SLD	
		DRAWN	REVISED
		PRT	
		CHECKED	REVISED
		SLD	

**STATE OF ILLINOIS**  
**DEPARTMENT OF TRANSPORTATION**

**SB NORTH ABUTMENT DETAILS**  
**STRUCTURE NO. 090-0165 / 0166**  
SHEET NO. SA25 OF SA47 SHEETS

F.A.I. RTE.	SECTION	COUNTY	TOTAL SHEETS	SHEET NO.
74	90-114R(14)B-4,14,14HVB(R)	TAZEWELL	2433	1989
			CONTRACT NO.	68620
ILLINOIS FED. AID PROJECT				

x:\10200s\102056\engineering\documents\phase-11\155over\74\Final\0900165\_68620\_25\_abut2.dgn 3-30-06 PM 10/22/2012