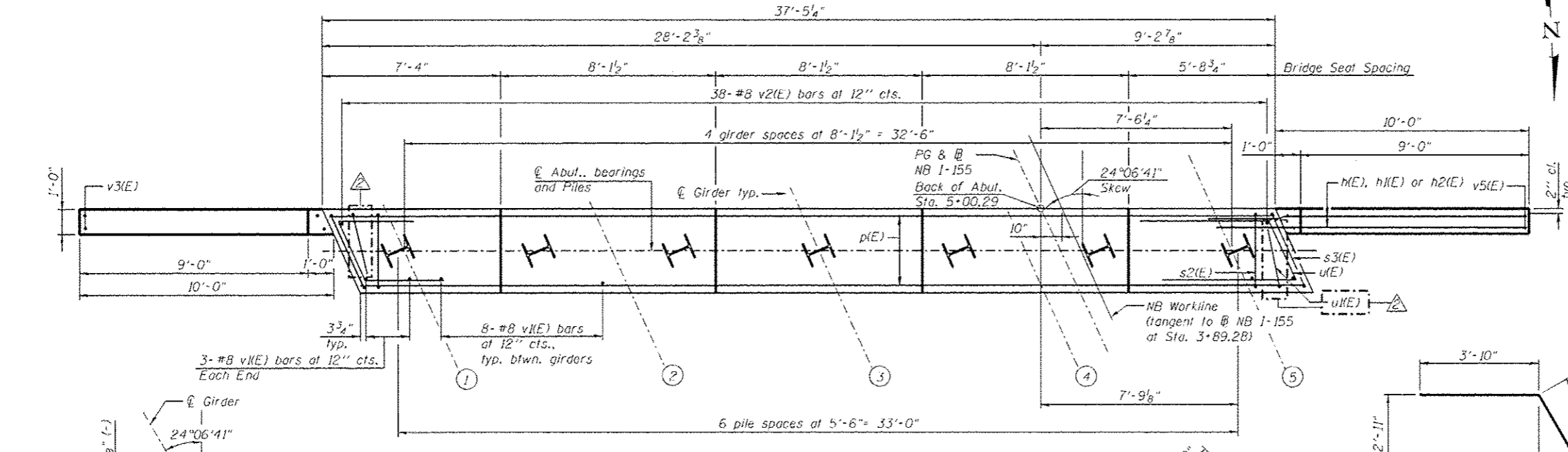


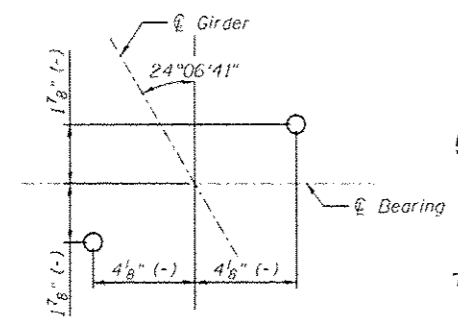
**SEC. THRU ABUT.**



**BILL OF MATERIAL**

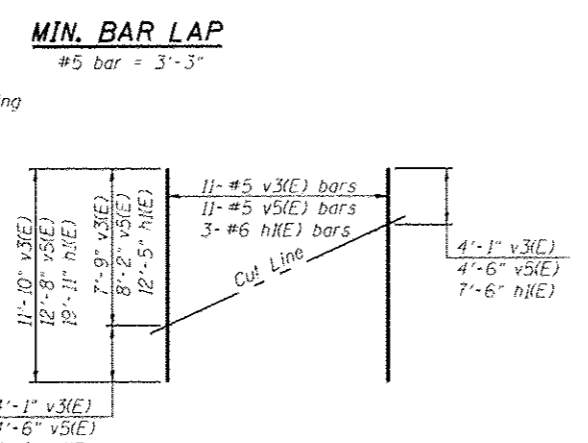
Bar	No.	Size	Length	Shape
n(E)	42	#6	12'-5"	
n(E)	6	#6	19'-11"	
n2(E)	4	#5	10'-2"	
p(E)	8	#7	36'-11"	
p3(E)	8	#5	20'-1"	
p3(E)	4	#5	7'-9"	
s2(E)	32	#5	13'-3"	
s3(E)	2	#5	13'-11"	
s4(E)	64	#5	4'-4"	
s5(E)	8	#5	4'-8"	
s6(E)	8	#5	6'-10"	
u(E)	8	#6	10'-10"	
u(E)	2	#5	9'-2"	
v(E)	38	#8	6'-6"	
v2(E)	38	#8	7'-7"	
v3(E)	11	#5	11'-10"	
v5(E)	11	#5	12'-8"	
Concrete Structures	Cu. Yd.		22.4	
Reinforcement Bars, Epoxy Coated	Pound		4,540	
Furnishing Steel Piles HP12X53	Foot		546	
Driving Piles	Foot		546	

Bars indicated thus 4x2-#5 etc. indicates 4 lines of bars with 2 lengths per line.

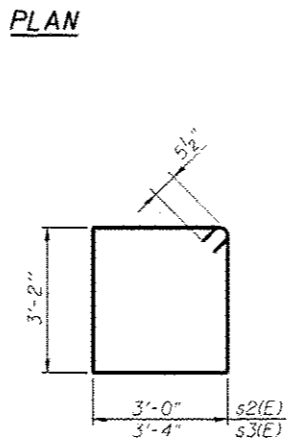


**ANCHOR BOLT DETAIL**

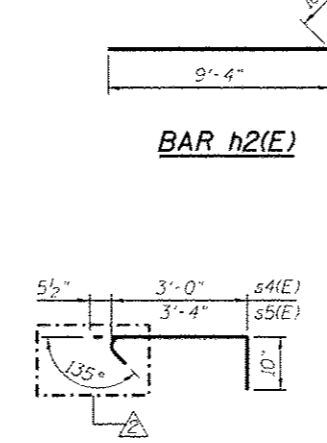
**PILE DATA**  
 Type: HP12x53  
 Nominal Required Bearing: 333 kips  
 Factored Resistance Available: 183 kips  
 Est. Length: 78 ft.  
 No. Production Piles: 7  
 No. Test Piles: 0



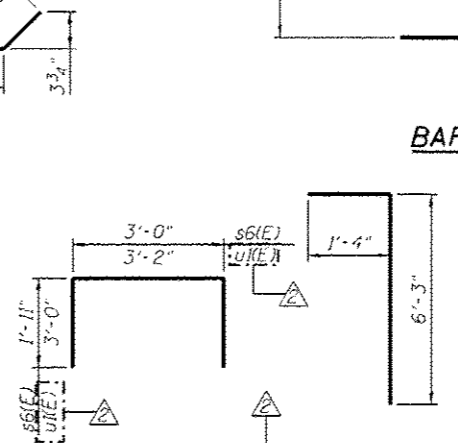
**FIELD CUTTING DIAGRAM**  
 Order v3(E), v5(E) and h(E) full length. Cut as shown and use remainder of bars in opposite face.



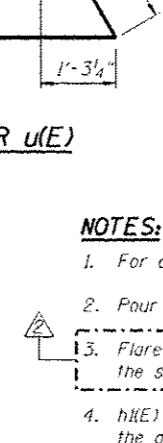
**BARS s2(E) & s3(E)**



**BARS s4(E) & s5(E)**



**BARS s6(E) & u(E)**



**BAR v2(E)**

- NOTES:**
- For details of piles, see sheet SA30.
  - Four steps monolithically with cap.
  - Flare u(E) bars between the s2(E) bar and the s3(E) bar.
  - h(E) or h2(E) bars shall not be embedded in the approach slab.
  - Adjust bar spacing to avoid anchor bolt locations.



FILE NAME	DESIGNED	REVISIONS
0900165_66620_26_abut3.dgn	DTS	10/23/2012 MFB
	SLD	
	PRT	
	SLD	

**STATE OF ILLINOIS  
 DEPARTMENT OF TRANSPORTATION**

**NB SOUTH ABUTMENT DETAILS  
 STRUCTURE NO. 090-0165 / 0166**

F.A.I. RTE.	SECTION	COUNTY	TOTAL SHEETS	SHEET NO.
74	90-114R114B-4,14,14HV8IBR	TAZEWELL	2433	1890
				CONTRACT NO. 68620
ILLINOIS FED. AID PROJECT				

x:\10000s\10056\engineering\documents\phase\_11\115cover\74\final\0900165\_66620\_26\_abut3.dgn 10/22/2012 3:30:07 PM