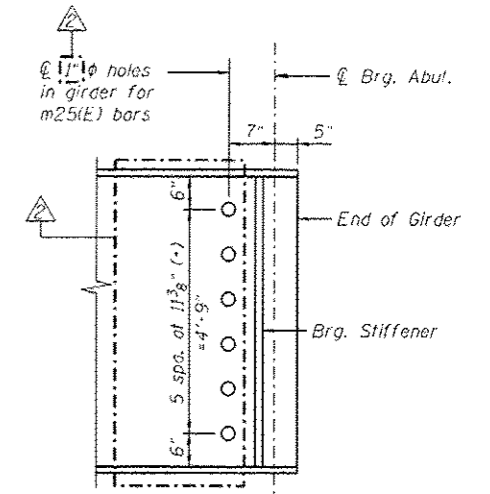
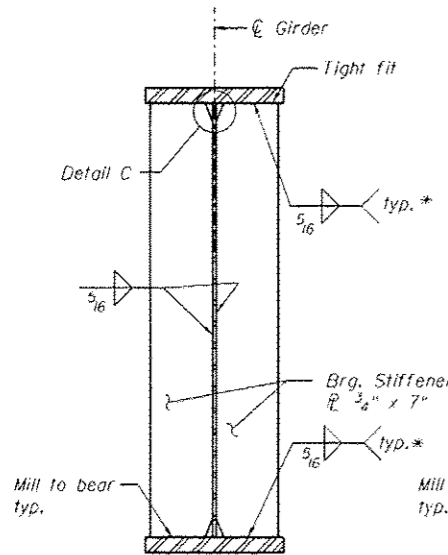


GIRDER ELEVATION



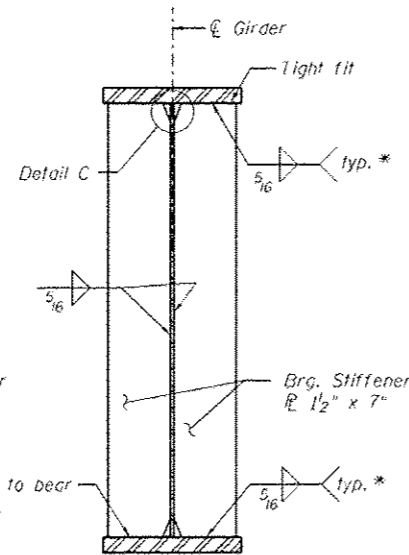
END OF GIRDER ELEVATION

* Terminate weld 1/4" from outside edges of R's



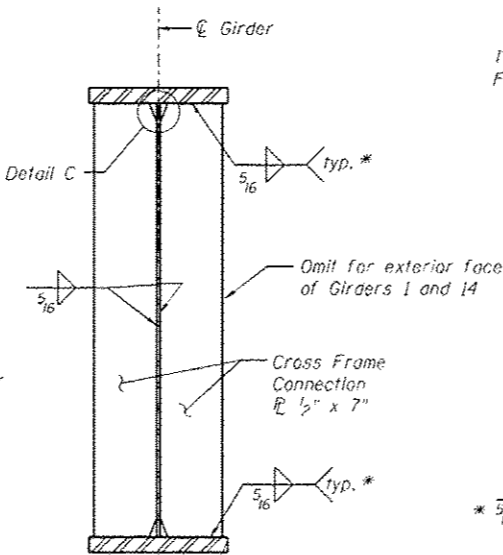
BEARING STIFFENER AT ABUTMENT

(No. plates required = 56)



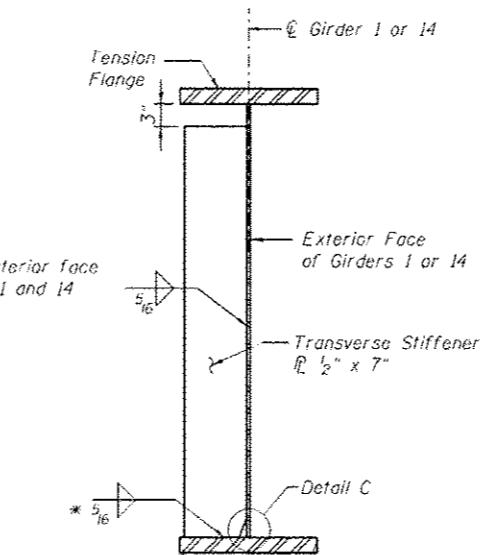
BEARING STIFFENER AT PIER

(No. plates required = 28)



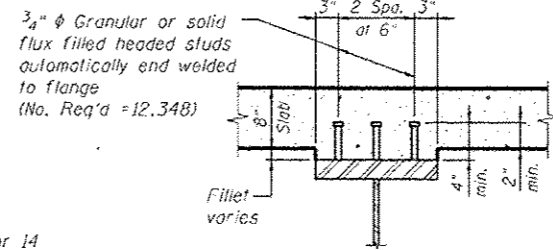
CONNECTION PLATE

(No. plates required = 3/1)

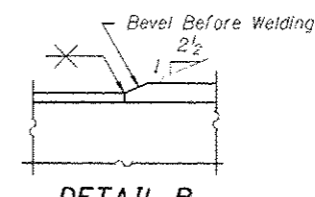


TRANSVERSE STIFFENER

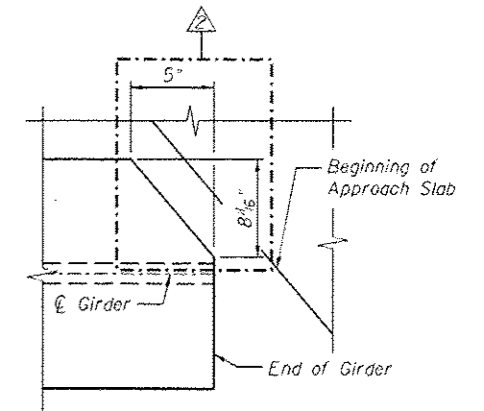
(No. plates required = 2)



SECTION A-A

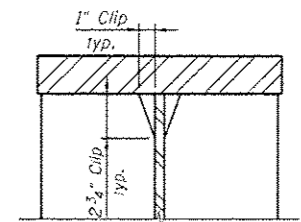


DETAIL B



END OF GIRDER COPING DETAIL

(Top Flange only)



DETAIL C

(Typical top & bottom flanges)

NOTES:

1. All Girder webs and flanges shall be AASHTO M270 Grade 50 steel.
2. "NTR" denotes plates to which notch toughness requirements are applicable.
3. Load carrying components designated "NTR" shall conform to the Impact Testing Requirements, Zone 2.

benesch
engineers - scientists - planners
Alfred Benesch & Company
205 North Michigan Avenue, Suite 2400
Chicago, Illinois 60601
312-565-0450 Job No. 10056

FILE NAME : 0900169_00620_30_std1.dgn	USER NAME : mbecker	DESIGNED - JLS/DTS	REVISED - 2 10/23/2012 MFB
	SCALE :	CHECKED - MRB	REVISED -
	PLOT DATE : 10/22/2012	DRAWN - PRT	REVISED -
		CHECKED - MRB	REVISED -

**STATE OF ILLINOIS
DEPARTMENT OF TRANSPORTATION**

**GIRDER DETAILS 1 OF 4
STRUCTURE NO. 090-0169**

SHEET NO. SC30 OF SC63 SHEETS

F.A.I. RTE. 74	SECTION 90-(14R;14HB-4,14,14HB;BR)	COUNTY TAZEWELL	TOTAL SHEETS 2433	SHEET NO. 2006
CONTRACT NO. 68620			ILLINOIS FED. AID PROJECT	