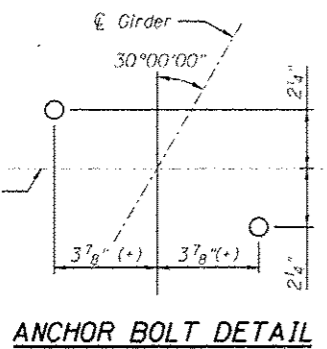


ELEVATION
(Looking East)
(Stage 3)

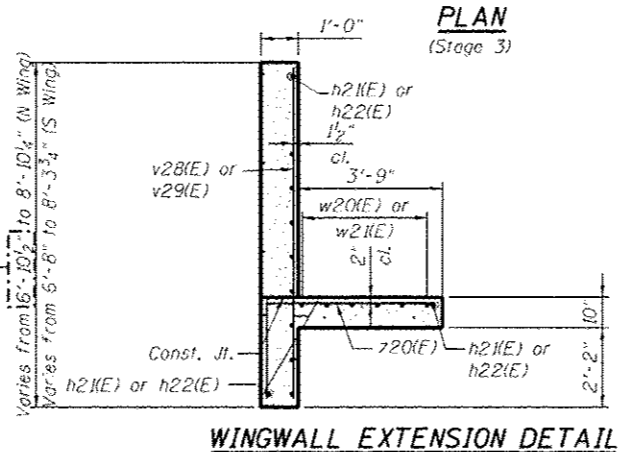
PLAN
(Stage 3)

SECTION THRU ABUT.

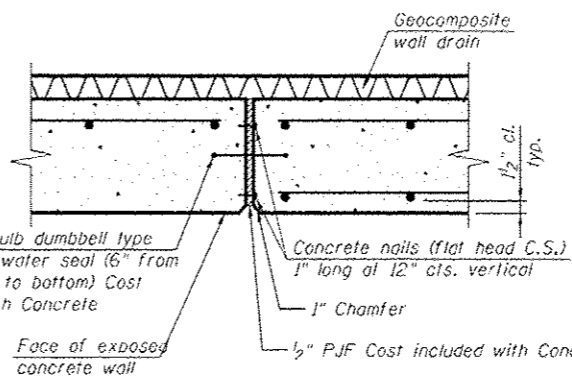


ANCHOR BOLT DETAIL

PILE DATA
Type: HP12x74
Nominal Required Bearing: 350 kips
Factored Resistance Available: 193 kips
Est. Length: 67 ft.
No. Production Piles: 29
No. Test Piles: 1



WINGWALL EXTENSION DETAIL



EXPANSION JOINT DETAIL

- NOTES:**
1. For details of Bar Splicers, see sheet SC44.
 2. For details of piles, see sheet SC43.
 3. Pour steps monolithically with cap.
 4. For Bill of Material and Bar List, see sheet SC39.
 5. Adjust bar spacing to avoid anchor bolt locations.
 6. Flare all u21(E) bars between the s23(E) bar and end pile.

benesch
engineers - scientists - planners
Alfred Benesch & Company
205 North Michigan Avenue, Suite 2400
Chicago, Illinois 60601
312-565-0450 Job No. 10056

FILE NAME =	USER NAME = mbecker	DESIGNED - DTS	REVISED - 10/23/2012 MFB
PROJECT = 0900169_66620_38_abut4.dgn	SCALE =	CHECKED - SLD/JLS	REVISED -
DATE = 10/22/2012		DRAWN - PRT/DTS	REVISED -
		CHECKED - SLD	REVISED -

STATE OF ILLINOIS
DEPARTMENT OF TRANSPORTATION

EAST ABUTMENT DETAILS 1 OF 3
STRUCTURE NO. 090-0169
SHEET NO. SC38 OF SC63 SHEETS

F.A.I. RTE.	SECTION	COUNTY	TOTAL SHEETS	SHEET NO.
74	90-114R(14H)-4,14,14HVBIBR	TAZEWELL	2433	2014
CONTRACT NO. 68620			ILLINOIS FED. AID PROJECT	

x:\10000s\10056\engineering\documents\phase.1\174over\jackson\Final\0900169_66620_38_abut4.dgn 3:38:21 PM 10/22/2012