

STANDARD BAR SPLICER ASSEMBLY

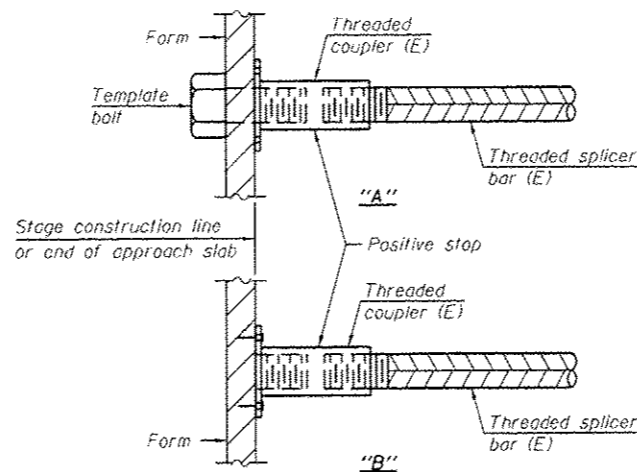
Minimum Lap Lengths						
Bar size to be spliced	Table 1	Table 2	Table 3	Table 4	Table 5	Table 6
3, 4	1'-5"	1'-11"	2'-1"	2'-4"	2'-7"	2'-11"
5	1'-9"	2'-5"	2'-7"	2'-11"	3'-3"	3'-8"
6	2'-1"	2'-11"	3'-1"	3'-6"	3'-10"	4'-5"
7	2'-9"	3'-10"	4'-2"	4'-8"	5'-2"	5'-10"
8	3'-8"	5'-1"	5'-5"	6'-2"	6'-9"	7'-8"
9	4'-7"	6'-5"	6'-10"	7'-9"	8'-7"	9'-8"

- Table 1: Black bar, 0.8 Class C
- Table 2: Black bar, Top bar lap, 0.8 Class C
- Table 3: Epoxy bar, 0.8 Class C
- Table 4: Epoxy bar, Top bar lap, 0.8 Class C
- Table 5: Epoxy bar, Class C
- Table 6: Epoxy bar, Top bar lap, Class C

Threaded splicer bar length = min. lap length + 1/2" + thread length

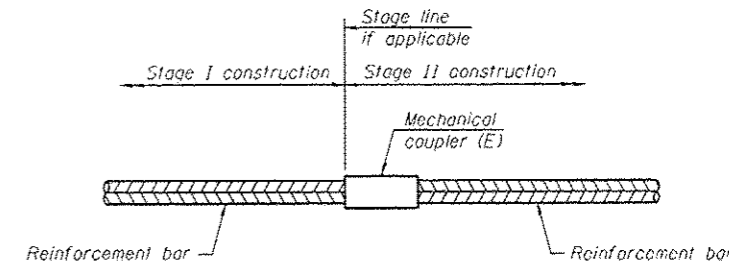
* Epoxy not required on Bar Splicer Assembly components used in conjunction with black bars.

Location	Bar size	No. assemblies required	Table for minimum lap length
Pier	#6	70	Table 5
Pier	#9	34	Table 5
Deck	#6	8	Table 5
Deck	#5	2,386	Table 5
W. Diaphragm	#6	10	Table 5
E. Diaphragm	#6	10	Table 5



INSTALLATION AND SETTING METHODS

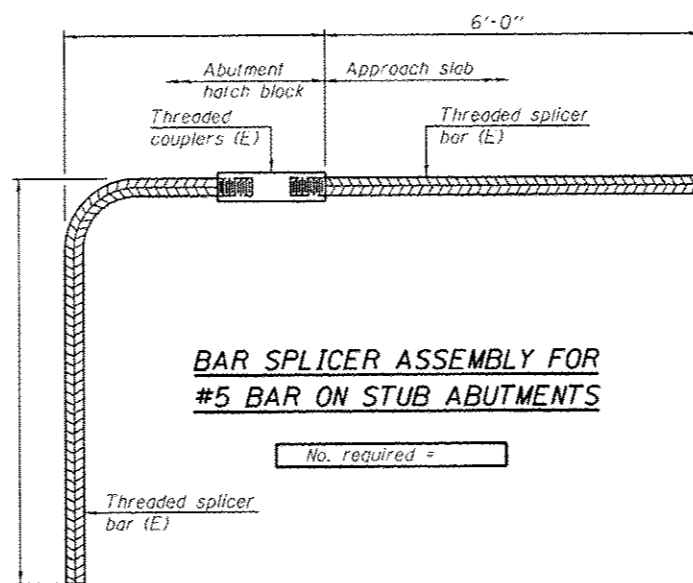
"A": Set bar splicer assembly by means of a template bolt.
 "B": Set bar splicer assembly by nailing to wood forms or cementing to steel forms.
 (E): Indicates epoxy coating.



STANDARD MECHANICAL SPLICER

Location	Bar size	No. assemblies required
W. Diaphragm	#6	8
E. Diaphragm	#6	8
Pier Crashwall	#6	120

Location	Bar size	No. assemblies required	Table for minimum lap length
W. Appr. Slab	#4	50	Table 5
W. Appr. Slab	#5	172	Table 5
E. Appr. Slab	#4	50	Table 5
E. Appr. Slab	#5	172	Table 5
W. Abutment	#5	12	Table 5
W. Abutment	#7	16	Table 5
E. Abutment	#5	12	Table 5
E. Abutment	#7	16	Table 5



BAR SPLICER ASSEMBLY FOR #5 BAR ON STUB ABUTMENTS

No. required =

NOTES

Splicer bars shall be deformed with threaded ends and have a minimum 60 ksi yield strength.
 All reinforcement shall be lapped and tied to the splicer bars.
 Bar splicer assemblies shall be epoxy coated according to the requirements for reinforcement bars. See Section 508 of the Standard Specifications.
 See approved list of bar splicer assemblies and mechanical splicers for alternatives.

BSD-1 8-31-12
benesch Alfred Benesch & Company
 205 North Michigan Avenue, Suite 2400
 Chicago, Illinois 60601
 312-565-0450 Job No. 10056

Entire sheet revised

FILE NAME: 0900169_68620_44_b-splc.dgn	USER NAME: mbecker	DESIGNED: MFB	REVISED: 10/23/2012 MFB
		CHECKED: MRB	REVISED: -
	PLOT SCALE: -	DRAWN: PRT/LLR	REVISED: -
	PLOT DATE: 10/22/2012	CHECKED: MRB	REVISED: -

**STATE OF ILLINOIS
 DEPARTMENT OF TRANSPORTATION**

**BAR SPLICER ASSEMBLY AND MECHANICAL SPLICER DETAILS
 STRUCTURE NO. 090-0169**
 SHEET NO. SC44 OF SC63 SHEETS

F.A.I. RTE.	SECTION	COUNTY	TOTAL SHEETS	SHEET NO.
74	90-(14R)(14H)-4,14,14HVB(BR)	TAZEWELL	2433	2020

CONTRACT NO. 68620
 ILLINOIS FED. AID PROJECT

x:\100005\10056\engineer\ing_documents_phase1\174over-Jackson\Final\0900169_68620_44_b-splc.dgn 3:30:25 PM 10/22/2012