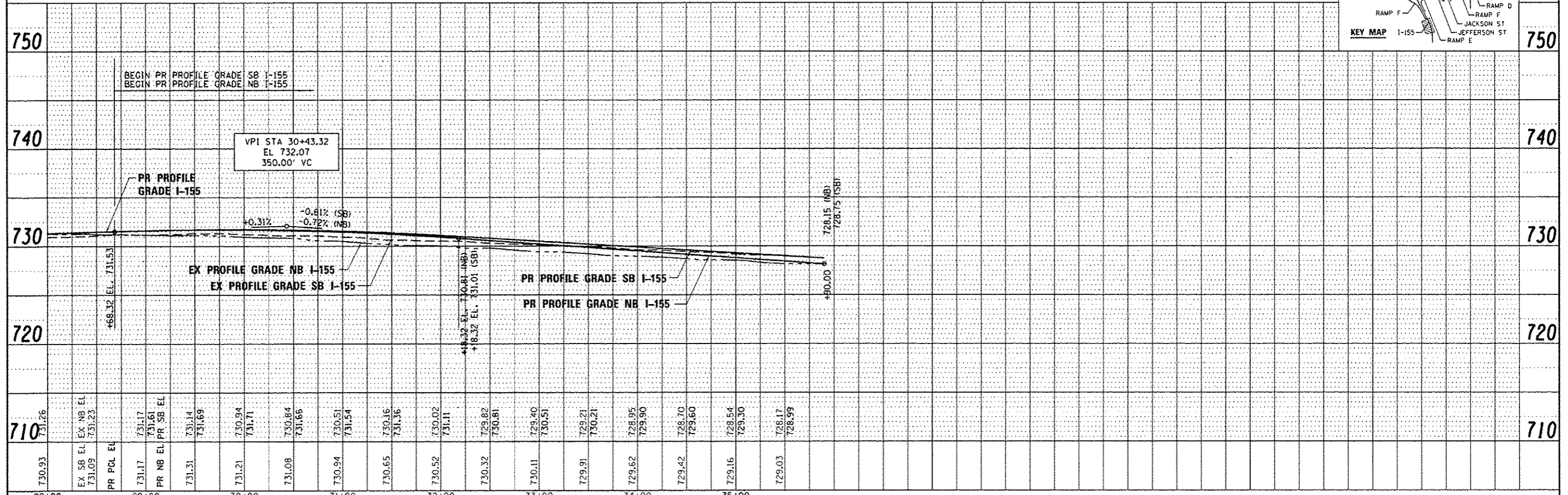
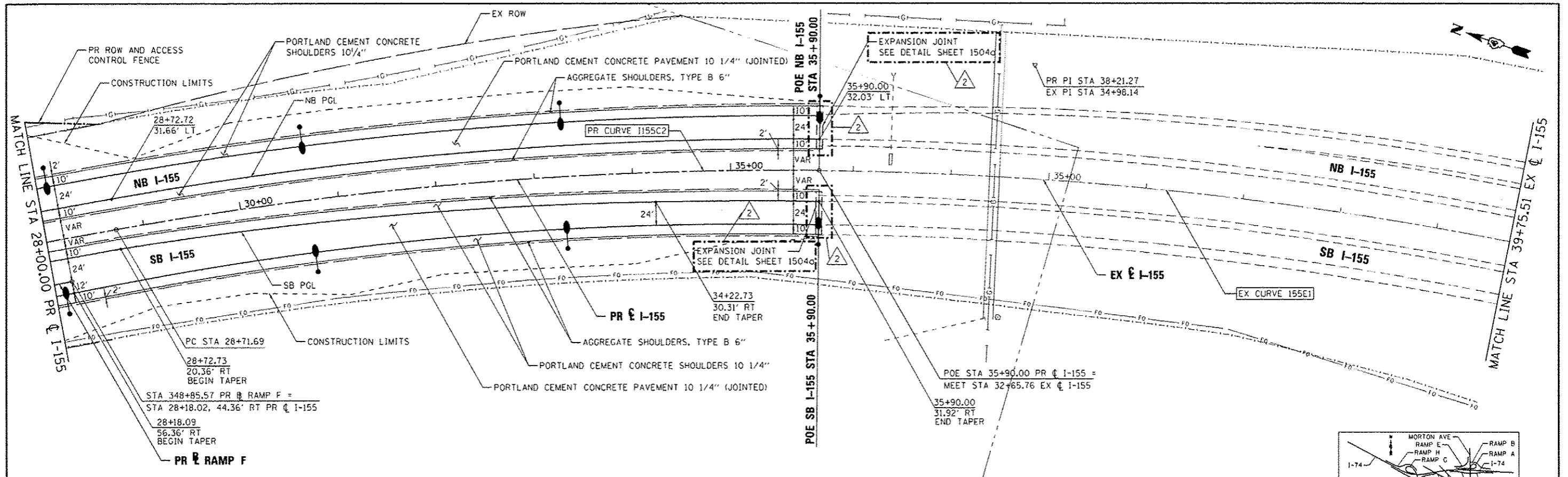


PLAN	DATE
DESIGNED - AJP	
DRAWN - TMB	
CHECKED - JNR	
DATE - JULY 20, 2012	

PROFILE	DATE
DESIGNED - AJP	
DRAWN - TMB	
CHECKED - JNR	
DATE - JULY 20, 2012	



FILE NAME - ...ND46822-sh-1-155-pr-f15.dgn	DESIGNED - AJP	REVISION 10/23/12 JNR/MOA
USER NAME - melanorbin	DRAWN - TMB	REVISION
PLOT DATE - 10/22/2012	CHECKED - JNR	REVISION
	DATE - JULY 20, 2012	REVISION



STATE OF ILLINOIS
DEPARTMENT OF TRANSPORTATION

PLAN AND PROFILE I-155		F.A.I. RTE.	SECTION	COUNTY	TOTAL SHEETS	SHEET NO.
SCALE: 1"=50'		90-[14RH]4HB-4,14,14HV[B]BR		TAZEWELL	2433	221
SHEET NO. 3 OF 4 SHEETS		STA. 28+00.00 TO STA. 39+75.51		CONTRACT NO. 68620		
ILLINOIS FED. AID PROJECT						